

ACTN2 Antibody
Rabbit Polyclonal Antibody
Catalog # ALS13655**Specification**

ACTN2 Antibody - Product Information

Application	IF, WB, IHC
Primary Accession	P35609
Reactivity	Human
Host	Rabbit
Clonality	Polyclonal
Calculated MW	104kDa KDa

ACTN2 Antibody - Additional Information**Gene ID** 88**Other Names**

Alpha-actinin-2, Alpha-actinin skeletal muscle isoform 2, F-actin cross-linking protein, ACTN2

Target/Specificity

Human alpha Actinin 2. Predicted cross-reactivity based on amino acid sequence homology: mouse (100%), rat (85%), bovine (84%), monkey (100%), zebrafish (86%).

Reconstitution & Storage

Aliquot and store at -20°C. Minimize freezing and thawing.

Precautions

ACTN2 Antibody is for research use only and not for use in diagnostic or therapeutic procedures.

ACTN2 Antibody - Protein Information**Name** ACTN2**Function**

F-actin cross-linking protein which is thought to anchor actin to a variety of intracellular structures. This is a bundling protein.

Cellular Location

Cytoplasm, myofibril, sarcomere, Z line. Note=Colocalizes with MYOZ1 and FLNC at the Z-lines of skeletal muscle

Tissue Location

Expressed in both skeletal and cardiac muscle.

Volume

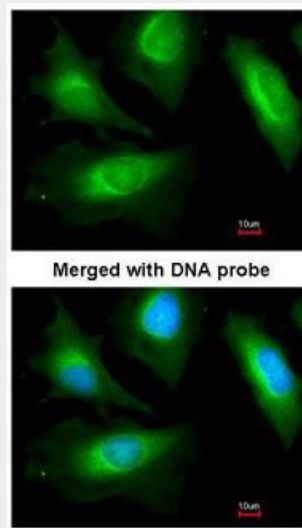
50 µl

ACTN2 Antibody - Protocols

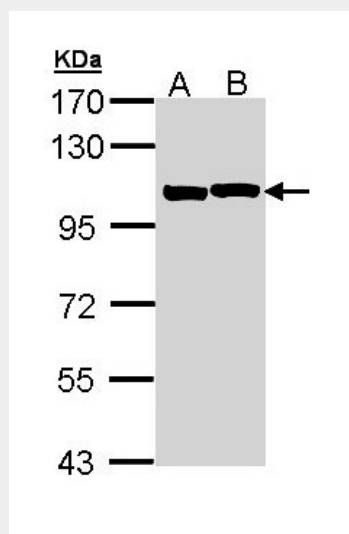
Provided below are standard protocols that you may find useful for product applications.

- [Western Blot](#)
- [Blocking Peptides](#)
- [Dot Blot](#)
- [Immunohistochemistry](#)
- [Immunofluorescence](#)
- [Immunoprecipitation](#)
- [Flow Cytometry](#)
- [Cell Culture](#)

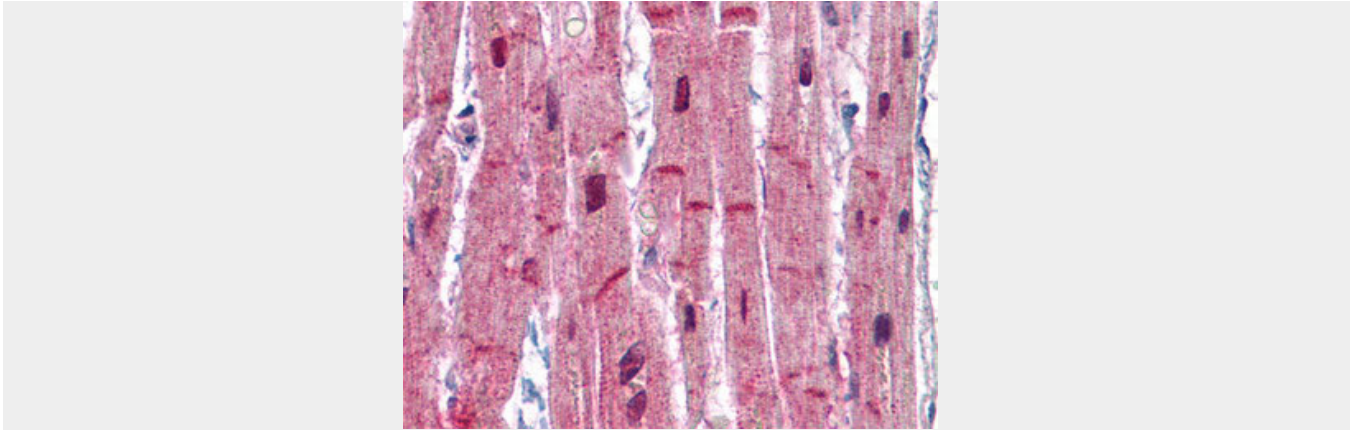
ACTN2 Antibody - Images



Immunofluorescence of paraformaldehyde-fixed HeLa, using actinin, alpha 2 antibody at 1:200...



Sample (30 ug of whole cell lysate).



Anti-ACTN2 antibody IHC of human heart.

ACTN2 Antibody - Background

F-actin cross-linking protein which is thought to anchor actin to a variety of intracellular structures. This is a bundling protein.

ACTN2 Antibody - References

- Beggs A.H.,et al.J. Biol. Chem. 267:9281-9288(1992).
- Tiso N.,et al.Biochem. Biophys. Res. Commun. 265:256-259(1999).
- Ota T.,et al.Nat. Genet. 36:40-45(2004).
- Gregory S.G.,et al.Nature 441:315-321(2006).
- Mural R.J.,et al.Submitted (JUL-2005) to the EMBL/GenBank/DDBJ databases.