

PLIN2 / ADFP / Adipophilin Antibody
Rabbit Polyclonal Antibody
Catalog # ALS13653

Specification

PLIN2 / ADFP / Adipophilin Antibody - Product Information

Application	WB, IHC
Primary Accession	O99541
Reactivity	Human
Host	Rabbit
Clonality	Polyclonal
Calculated MW	48kDa KDa

PLIN2 / ADFP / Adipophilin Antibody - Additional Information

Gene ID 123

Other Names

Perilipin-2, Adipophilin, Adipose differentiation-related protein, ADRP, PLIN2, ADFP

Target/Specificity

Human ADFP. Predicted cross-reactivity based on amino acid sequence homology: mouse (82%), bovine (86%), pig (87%).

Reconstitution & Storage

Aliquot and store at -20°C. Minimize freezing and thawing.

Precautions

PLIN2 / ADFP / Adipophilin Antibody is for research use only and not for use in diagnostic or therapeutic procedures.

PLIN2 / ADFP / Adipophilin Antibody - Protein Information

Name PLIN2 ([HGNC:248](#))

Synonyms ADFP

Function

Structural component of lipid droplets, which is required for the formation and maintenance of lipid storage droplets.

Cellular Location

Membrane {ECO:0000250|UniProtKB:P43883}; Peripheral membrane protein {ECO:0000250|UniProtKB:P43883}. Lipid droplet

Tissue Location

Milk lipid globules..

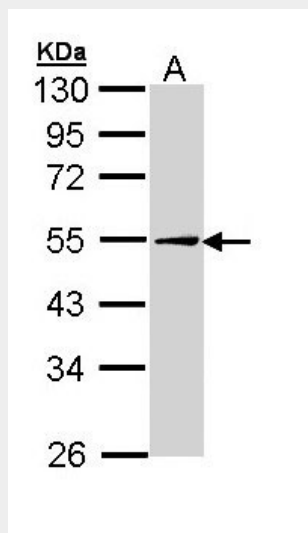
Volume
50 μ l

PLIN2 / ADFP / Adipophilin Antibody - Protocols

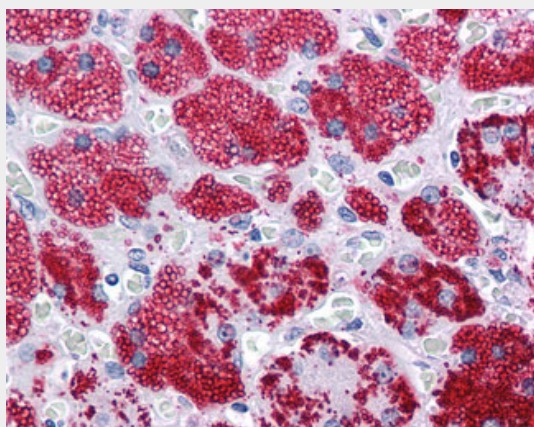
Provided below are standard protocols that you may find useful for product applications.

- [Western Blot](#)
- [Blocking Peptides](#)
- [Dot Blot](#)
- [Immunohistochemistry](#)
- [Immunofluorescence](#)
- [Immunoprecipitation](#)
- [Flow Cytometry](#)
- [Cell Culture](#)

PLIN2 / ADFP / Adipophilin Antibody - Images



Sample (30 μ g of whole cell lysate). A: Hep G2. 10% SDS PAGE. ADFP antibody diluted at 1:1000.



Anti-Adipophilin antibody IHC of human adrenal.

PLIN2 / ADFP / Adipophilin Antibody - Background

May be involved in development and maintenance of adipose tissue.

PLIN2 / ADFP / Adipophilin Antibody - References

- Heid H.W., et al. *Biochem. J.* 320:1025-1030(1996).
Tangkeangsirisin W., et al. Submitted (NOV-2001) to the EMBL/GenBank/DDBJ databases.
Burkard T.R., et al. *BMC Syst. Biol.* 5:17-17(2011).
Bienvenut W.V., et al. *Mol. Cell. Proteomics* 11:M111.015131-M111.015131(2012).
Van Damme P., et al. *Proc. Natl. Acad. Sci. U.S.A.* 109:12449-12454(2012).