

Complement C9 Antibody
Rabbit Polyclonal Antibody
Catalog # ALS13652**Specification**

Complement C9 Antibody - Product Information

Application	IF, WB, IHC
Primary Accession	P02748
Reactivity	Human
Host	Rabbit
Clonality	Polyclonal
Calculated MW	63kDa KDa

Complement C9 Antibody - Additional Information**Gene ID** 735**Other Names**

Complement component C9, Complement component C9a, Complement component C9b, C9

Target/Specificity

Human Complement C9.

Reconstitution & Storage

Aliquot and store at -20°C. Minimize freezing and thawing.

Precautions

Complement C9 Antibody is for research use only and not for use in diagnostic or therapeutic procedures.

Complement C9 Antibody - Protein Information**Name** C9**Function**

Constituent of the membrane attack complex (MAC) that plays a key role in the innate and adaptive immune response by forming pores in the plasma membrane of target cells (PubMed: [26841934](http://www.uniprot.org/citations/26841934), PubMed: [9212048](http://www.uniprot.org/citations/9212048), PubMed: [9634479](http://www.uniprot.org/citations/9634479)). C9 is the pore-forming subunit of the MAC (PubMed: [26841934](http://www.uniprot.org/citations/26841934), PubMed: [30111885](http://www.uniprot.org/citations/30111885), PubMed: [4055801](http://www.uniprot.org/citations/4055801)).

Cellular Location

Secreted. Target cell membrane; Multi-pass membrane protein. Note=Secreted as soluble monomer Oligomerizes at target membranes, forming a pre-pore. A conformation change then

leads to the formation of a 100 Angstrom diameter pore

Tissue Location

Plasma (at protein level).

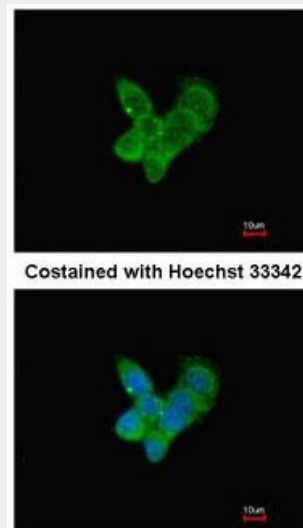
Volume

50 μ l

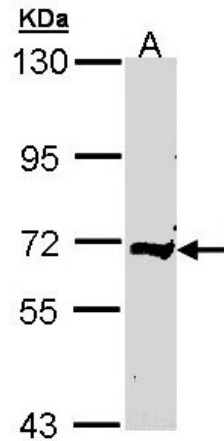
Complement C9 Antibody - Protocols

Provided below are standard protocols that you may find useful for product applications.

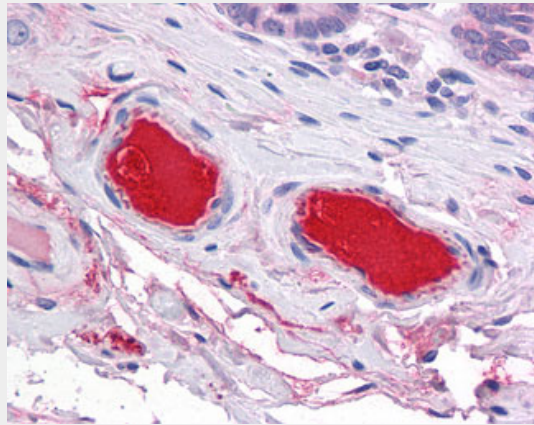
- [Western Blot](#)
- [Blocking Peptides](#)
- [Dot Blot](#)
- [Immunohistochemistry](#)
- [Immunofluorescence](#)
- [Immunoprecipitation](#)
- [Flow Cytometry](#)
- [Cell Culture](#)

Complement C9 Antibody - Images

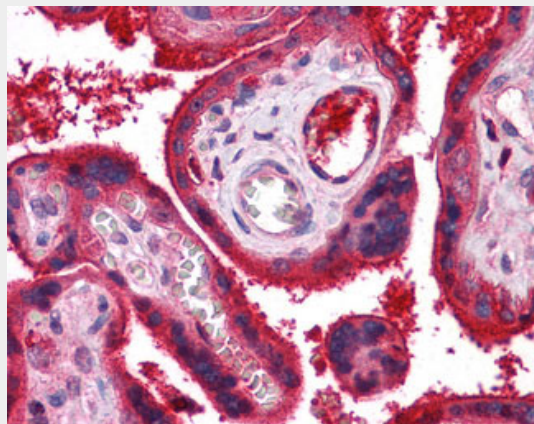
Immunofluorescence of methanol-fixed HepG2, using Complement C9 antibody at 1:200 dilution.



Sample (30 ug of whole cell lysate). A: Raji. 7.5% SDS PAGE. C9 antibody diluted at 1:500.



Anti-C9 antibody IHC of human small intestine, vessels.



Anti-C9 antibody IHC of human placenta.

Complement C9 Antibody - Background

Constituent of the membrane attack complex (MAC) that plays a key role in the innate and adaptive immune response by forming pores in the plasma membrane of target cells. C9 is the pore-forming subunit of the MAC.

Complement C9 Antibody - References

Stanley K.K.,et al.EMBO J. 4:375-382(1985).
Discipio R.G.,et al.Proc. Natl. Acad. Sci. U.S.A. 81:7298-7302(1984).
Marazziti D.,et al.Biochemistry 27:6529-6534(1988).
Witzel-Schloemp K.,et al.Immunogenetics 48:144-147(1998).
DiScipio R.G.,et al.J. Biol. Chem. 260:14802-14809(1985).