

IDH1 / IDH Antibody
Rabbit Polyclonal Antibody
Catalog # ALS13644**Specification**

IDH1 / IDH Antibody - Product Information

Application	WB, IHC
Primary Accession	O75874
Reactivity	Human
Host	Rabbit
Clonality	Polyclonal
Calculated MW	47kDa KDa

IDH1 / IDH Antibody - Additional Information**Gene ID** 3417**Other Names**

Isocitrate dehydrogenase [NADP] cytoplasmic, IDH, 1.1.1.42, Cytosolic NADP-isocitrate dehydrogenase, IDP, NADP(+)-specific ICDH, Oxalosuccinate decarboxylase, IDH1, PICD

Target/Specificity

Human IDH1. Predicted cross-reactivity based on amino acid sequence homology: mouse (96%), rat (97%), bovine (95%), zebrafish (85%).

Reconstitution & Storage

Aliquot and store at -20°C. Minimize freezing and thawing.

Precautions

IDH1 / IDH Antibody is for research use only and not for use in diagnostic or therapeutic procedures.

IDH1 / IDH Antibody - Protein Information**Name** IDH1**Synonyms** PICD**Function**

Catalyzes the NADP(+)-dependent oxidative decarboxylation of isocitrate (D-threo-isocitrate) to 2-ketoglutarate (2-oxoglutarate), which is required by other enzymes such as the phytanoyl-CoA dioxygenase (PubMed: [10521434](http://www.uniprot.org/citations/10521434)), PubMed: [19935646](http://www.uniprot.org/citations/19935646)). Plays a critical role in the generation of NADPH, an important cofactor in many biosynthesis pathways (PubMed: [10521434](http://www.uniprot.org/citations/10521434)). May act as a corneal epithelial crystallin and may be involved in maintaining corneal epithelial transparency (By similarity).

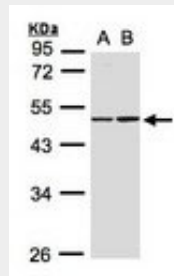
Cellular Location

Cytoplasm, cytosol. Peroxisome

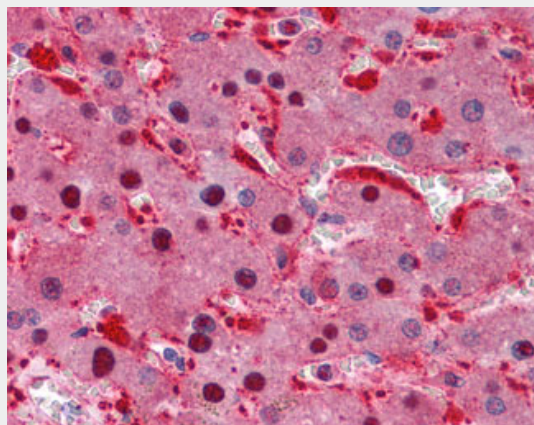
Volume50 μ l**IDH1 / IDH Antibody - Protocols**

Provided below are standard protocols that you may find useful for product applications.

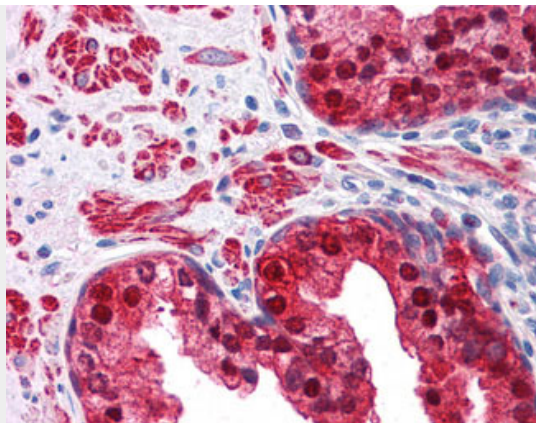
- [Western Blot](#)
- [Blocking Peptides](#)
- [Dot Blot](#)
- [Immunohistochemistry](#)
- [Immunofluorescence](#)
- [Immunoprecipitation](#)
- [Flow Cytometry](#)
- [Cell Culture](#)

IDH1 / IDH Antibody - Images

Sample(30 ug whole cell lysate). A: A431. B: Raji. 10% SDS PAGE. IDH1 antibody diluted at 1:1000.



Anti-IDH1 antibody IHC of human liver.



Anti-IDH1 antibody IHC of human prostate.

IDH1 / IDH Antibody - References

- Nekrutenko A.,et al.Mol. Biol. Evol. 15:1674-1684(1998).
Geisbrecht B.V.,et al.J. Biol. Chem. 274:30527-30533(1999).
Wiemann S.,et al.Genome Res. 11:422-435(2001).
Ebert L.,et al.Submitted (JUN-2004) to the EMBL/GenBank/DDBJ databases.
Bechtel S.,et al.BMC Genomics 8:399-399(2007).