

STMN1 / Stathmin / LAG Antibody
Rabbit Polyclonal Antibody
Catalog # ALS13639

Specification

STMN1 / Stathmin / LAG Antibody - Product Information

Application	IF, WB, IHC
Primary Accession	P16949
Reactivity	Human
Host	Rabbit
Clonality	Polyclonal
Calculated MW	17kDa KDa

STMN1 / Stathmin / LAG Antibody - Additional Information

Gene ID 3925

Other Names

Stathmin, Leukemia-associated phosphoprotein p18, Metablastin, Oncoprotein 18, Op18, Phosphoprotein p19, pp19, Prosolin, Protein Pr22, pp17, STMN1, C1orf215, LAP18, OP18

Target/Specificity

Human Stathmin 1.

Reconstitution & Storage

Aliquot and store at -20°C. Minimize freezing and thawing.

Precautions

STMN1 / Stathmin / LAG Antibody is for research use only and not for use in diagnostic or therapeutic procedures.

STMN1 / Stathmin / LAG Antibody - Protein Information

Name STMN1

Synonyms C1orf215, LAP18, OP18

Function

Involved in the regulation of the microtubule (MT) filament system by destabilizing microtubules. Prevents assembly and promotes disassembly of microtubules. Phosphorylation at Ser-16 may be required for axon formation during neurogenesis. Involved in the control of the learned and innate fear (By similarity).

Cellular Location

Cytoplasm, cytoskeleton.

Tissue Location

Ubiquitous. Expression is strongest in fetal and adult brain, spinal cord, and cerebellum, followed

by thymus, bone marrow, testis, and fetal liver. Expression is intermediate in colon, ovary, placenta, uterus, and trachea, and is readily detected at substantially lower levels in all other tissues examined. Lowest expression is found in adult liver. Present in much greater abundance in cells from patients with acute leukemia of different subtypes than in normal peripheral blood lymphocytes, non-leukemic proliferating lymphoid cells, bone marrow cells, or cells from patients with chronic lymphoid or myeloid leukemia.

Volume

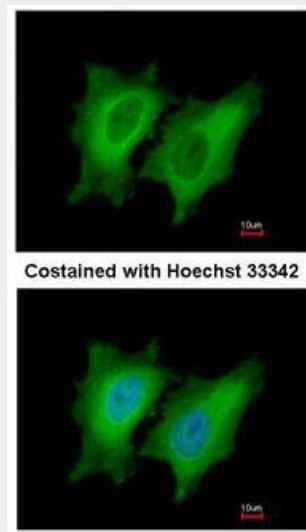
50 μ l

STMN1 / Stathmin / LAG Antibody - Protocols

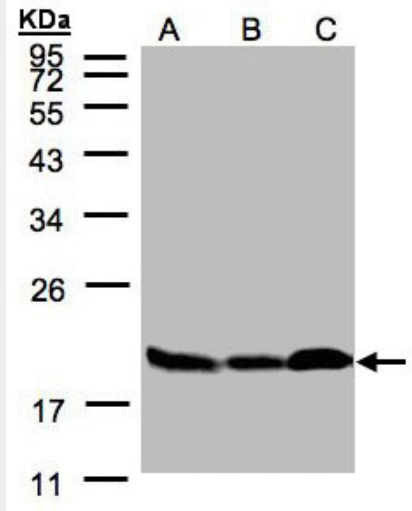
Provided below are standard protocols that you may find useful for product applications.

- [Western Blot](#)
- [Blocking Peptides](#)
- [Dot Blot](#)
- [Immunohistochemistry](#)
- [Immunofluorescence](#)
- [Immunoprecipitation](#)
- [Flow Cytometry](#)
- [Cell Culture](#)

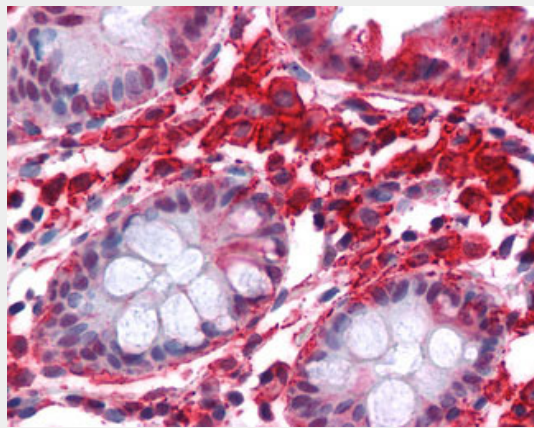
STMN1 / Stathmin / LAG Antibody - Images



Immunofluorescence of paraformaldehyde-fixed HeLa, using Stathmin 1 antibody at 1:200 dilution.



Sample(30 g of whole cell lysate).



Anti-STMN1 antibody IHC of human colon.

STMN1 / Stathmin / LAG Antibody - Background

Involved in the regulation of the microtubule (MT) filament system by destabilizing microtubules. Prevents assembly and promotes disassembly of microtubules. Phosphorylation at Ser- 16 may be required for axon formation during neurogenesis. Involved in the control of the learned and innate fear (By similarity).

STMN1 / Stathmin / LAG Antibody - References

- Zhu X.-X.,et al.J. Biol. Chem. 264:14556-14560(1989).
- Maucuer A.,et al.FEBS Lett. 264:275-278(1990).
- Melhem R.F.,et al.J. Biol. Chem. 266:17747-17753(1991).
- Hosoya H.,et al.Cell Struct. Funct. 21:237-243(1996).
- Ota T.,et al.Nat. Genet. 36:40-45(2004).