

**GSTM1 / MU Antibody**  
**Rabbit Polyclonal Antibody**  
**Catalog # ALS13624****Specification**

---

**GSTM1 / MU Antibody - Product Information**

Application	<b>WB, IHC</b>
Primary Accession	<a href="#">P09488</a>
Reactivity	<b>Human, Mouse</b>
Host	<b>Rabbit</b>
Clonality	<b>Polyclonal</b>
Calculated MW	<b>26kDa KDa</b>

**GSTM1 / MU Antibody - Additional Information****Gene ID** 2944**Other Names**

Glutathione S-transferase Mu 1, 2.5.1.18, GST HB subunit 4, GST class-mu 1, GSTM1-1, GSTM1a-1a, GSTM1b-1b, GTH4, GSTM1, GST1

**Target/Specificity**

Human GSTM1. Predicted cross-reactivity based on amino acid sequence homology: mouse (82%), rat (84%), bovine (83%), pig (83%).

**Reconstitution & Storage**

Aliquot and store at -20°C. Minimize freezing and thawing.

**Precautions**

GSTM1 / MU Antibody is for research use only and not for use in diagnostic or therapeutic procedures.

**GSTM1 / MU Antibody - Protein Information****Name** GSTM1 ([HGNC:4632](#))**Synonyms** GST1**Function**

Conjugation of reduced glutathione to a wide number of exogenous and endogenous hydrophobic electrophiles. Involved in the formation of glutathione conjugates of both prostaglandin A2 (PGA2) and prostaglandin J2 (PGJ2) (PubMed:&lt;a href="http://www.uniprot.org/citations/9084911" target="\_blank"&gt;9084911&lt;/a&gt;). Participates in the formation of novel hepoxilin regioisomers (PubMed:&lt;a href="http://www.uniprot.org/citations/21046276" target="\_blank"&gt;21046276&lt;/a&gt;).

**Cellular Location**

Cytoplasm.

**Tissue Location**

Liver (at protein level).

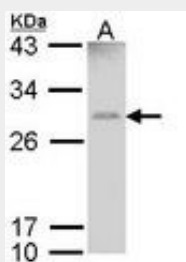
**Volume**

50  $\mu$ l

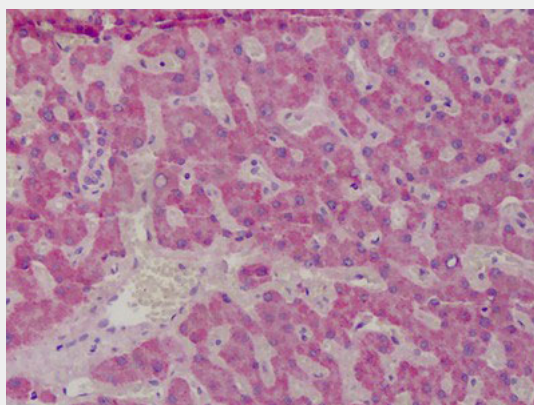
**GSTM1 / MU Antibody - Protocols**

Provided below are standard protocols that you may find useful for product applications.

- [Western Blot](#)
- [Blocking Peptides](#)
- [Dot Blot](#)
- [Immunohistochemistry](#)
- [Immunofluorescence](#)
- [Immunoprecipitation](#)
- [Flow Cytometry](#)
- [Cell Culture](#)

**GSTM1 / MU Antibody - Images**

Sample (30  $\mu$ g of whole cell lysate). A: HeLa. 12% SDS PAGE. GSTM1 antibody diluted at 1:1000.



Anti-GSTM1 antibody IHC of human liver.

**GSTM1 / MU Antibody - Background**

Conjugation of reduced glutathione to a wide number of exogenous and endogenous hydrophobic electrophiles.

**GSTM1 / MU Antibody - References**

Dejong J.L., et al. Nucleic Acids Res. 16:8541-8554(1988).

Seidegaard J.,et al.Proc. Natl. Acad. Sci. U.S.A. 85:7293-7297(1988).  
Chen P.,et al.Submitted (DEC-2003) to the EMBL/GenBank/DDBJ databases.  
Chen P.,et al.Submitted (JAN-2004) to the EMBL/GenBank/DDBJ databases.  
Halleck A.,et al.Submitted (JUN-2004) to the EMBL/GenBank/DDBJ databases.