

ARG1 / Arginase 1 Antibody
Rabbit Polyclonal Antibody
Catalog # ALS13619

Specification

ARG1 / Arginase 1 Antibody - Product Information

Application	WB
Primary Accession	P05089
Reactivity	Human, Mouse
Host	Rabbit
Clonality	Polyclonal
Calculated MW	35kDa KDa

ARG1 / Arginase 1 Antibody - Additional Information

Gene ID 383

Other Names

Arginase-1, 3.5.3.1, Liver-type arginase, Type I arginase, ARG1

Target/Specificity

Human Arginase I. Predicted cross-reactivity based on amino acid sequence homology: mouse (85%), rat (83%), rabbit (90%), bovine (89%), pig (90%).

Reconstitution & Storage

Aliquot and store at -20°C. Minimize freezing and thawing.

Precautions

ARG1 / Arginase 1 Antibody is for research use only and not for use in diagnostic or therapeutic procedures.

ARG1 / Arginase 1 Antibody - Protein Information

Name ARG1

Function

Key element of the urea cycle converting L-arginine to urea and L-ornithine, which is further metabolized into metabolites proline and polyamides that drive collagen synthesis and bioenergetic pathways critical for cell proliferation, respectively; the urea cycle takes place primarily in the liver and, to a lesser extent, in the kidneys.

Cellular Location

Cytoplasm. Cytoplasmic granule. Note=Localized in azurophil granules of neutrophils (PubMed:15546957)

Tissue Location

Within the immune system initially reported to be selectively expressed in granulocytes (polymorphonuclear leukocytes [PMNs]) (PubMed:15546957). Also detected in macrophages

mycobacterial granulomas (PubMed:23749634). Expressed in group2 innate lymphoid cells (ILC2s) during lung disease (PubMed:27043409)

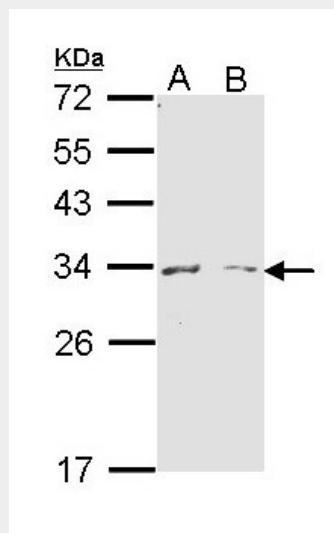
Volume

50 μ l

ARG1 / Arginase 1 Antibody - Protocols

Provided below are standard protocols that you may find useful for product applications.

- [Western Blot](#)
- [Blocking Peptides](#)
- [Dot Blot](#)
- [Immunohistochemistry](#)
- [Immunofluorescence](#)
- [Immunoprecipitation](#)
- [Flow Cytometry](#)
- [Cell Culture](#)

ARG1 / Arginase 1 Antibody - Images

Sample (30 ug of whole cell lysate).

ARG1 / Arginase 1 Antibody - References

- Haraguchi Y., et al. Proc. Natl. Acad. Sci. U.S.A. 84:412-415(1987).
Takiguchi M., et al. Nucleic Acids Res. 16:8789-8802(1988).
Lee Y.T., et al. Submitted (JAN-2002) to the EMBL/GenBank/DDBJ databases.
Kalnine N., et al. Submitted (MAY-2003) to the EMBL/GenBank/DDBJ databases.
Mungall A.J., et al. Nature 425:805-811(2003).