

CDC27 Antibody (C-Terminus)
Rabbit Polyclonal Antibody
Catalog # ALS13564**Specification**

CDC27 Antibody (C-Terminus) - Product Information

Application	WB
Primary Accession	P30260
Reactivity	Human, Mouse, Rat
Host	Rabbit
Clonality	Polyclonal
Calculated MW	92kDa KDa

CDC27 Antibody (C-Terminus) - Additional Information**Gene ID** 996**Other Names**

Cell division cycle protein 27 homolog, Anaphase-promoting complex subunit 3, APC3, CDC27 homolog, CDC27Hs, H-NUC, CDC27, ANAPC3, D0S1430E, D17S978E

Target/Specificity

Human CDC27

Reconstitution & Storage

Short term 4°C, long term aliquot and store at -20°C, avoid freeze thaw cycles. Store undiluted.

Precautions

CDC27 Antibody (C-Terminus) is for research use only and not for use in diagnostic or therapeutic procedures.

CDC27 Antibody (C-Terminus) - Protein Information**Name** CDC27**Synonyms** ANAPC3, D0S1430E, D17S978E**Function**

Component of the anaphase promoting complex/cyclosome (APC/C), a cell cycle-regulated E3 ubiquitin ligase that controls progression through mitosis and the G1 phase of the cell cycle (PubMed:18485873). The APC/C complex acts by mediating ubiquitination and subsequent degradation of target proteins: it mainly mediates the formation of 'Lys-11'-linked polyubiquitin chains and, to a lower extent, the formation of 'Lys-48'- and 'Lys-63'-linked polyubiquitin chains (PubMed:18485873). The APC/C complex catalyzes assembly of branched 'Lys-11'-/'Lys-48'-linked branched ubiquitin chains on target proteins (PubMed:29033132).

Cellular Location

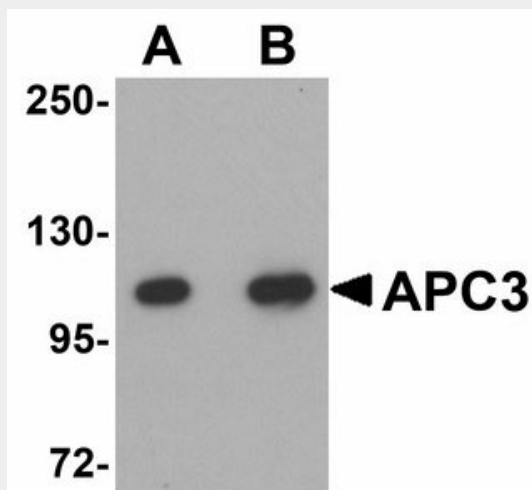
Nucleus. Cytoplasm, cytoskeleton, spindle

CDC27 Antibody (C-Terminus) - Protocols

Provided below are standard protocols that you may find useful for product applications.

- [Western Blot](#)
- [Blocking Peptides](#)
- [Dot Blot](#)
- [Immunohistochemistry](#)
- [Immunofluorescence](#)
- [Immunoprecipitation](#)
- [Flow Cytometry](#)
- [Cell Culture](#)

CDC27 Antibody (C-Terminus) - Images



Western blot of APC3 in mouse liver tissue lysate with APC3 antibody at (A) 1 and (B) 2 ug/ml.

CDC27 Antibody (C-Terminus) - Background

Component of the anaphase promoting complex/cyclosome (APC/C), a cell cycle-regulated E3 ubiquitin ligase that controls progression through mitosis and the G1 phase of the cell cycle. The APC/C complex acts by mediating ubiquitination and subsequent degradation of target proteins: it mainly mediates the formation of 'Lys-11'-linked polyubiquitin chains and, to a lower extent, the formation of 'Lys-48'- and 'Lys-63'-linked polyubiquitin chains.

CDC27 Antibody (C-Terminus) - References

Tugendreich S., et al. Proc. Natl. Acad. Sci. U.S.A. 90:10031-10035(1993).
Chen P.L., et al. Cell Growth Differ. 6:199-210(1995).
Zody M.C., et al. Nature 440:1045-1049(2006).
Mural R.J., et al. Submitted (SEP-2005) to the EMBL/GenBank/DDBJ databases.
Kraft C., et al. EMBO J. 22:6598-6609(2003).