

LYRM2 Antibody (C-Terminus)
Rabbit Polyclonal Antibody
Catalog # ALS13562**Specification**

LYRM2 Antibody (C-Terminus) - Product Information

Application	WB, ICC, IF, IHC
Primary Accession	O9NU23
Reactivity	Human, Mouse, Rat
Host	Rabbit
Clonality	Polyclonal
Calculated MW	10kDa KDa

LYRM2 Antibody (C-Terminus) - Additional Information**Gene ID** 57226**Other Names**

LYR motif-containing protein 2, LYRM2

Target/Specificity

Human LYRM2

Reconstitution & Storage

Short term 4°C, long term aliquot and store at -20°C, avoid freeze thaw cycles. Store undiluted.

Precautions

LYRM2 Antibody (C-Terminus) is for research use only and not for use in diagnostic or therapeutic procedures.

LYRM2 Antibody (C-Terminus) - Protein Information**Name** LYRM2**Function**

Involved in efficient integration of the N-module into mitochondrial respiratory chain complex I.

Cellular Location

Mitochondrion.

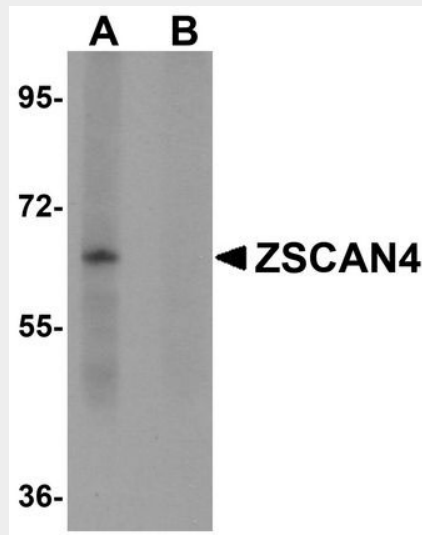
LYRM2 Antibody (C-Terminus) - Protocols

Provided below are standard protocols that you may find useful for product applications.

- [Western Blot](#)
- [Blocking Peptides](#)

- [Dot Blot](#)
- [Immunohistochemistry](#)
- [Immunofluorescence](#)
- [Immunoprecipitation](#)
- [Flow Cytometry](#)
- [Cell Culture](#)

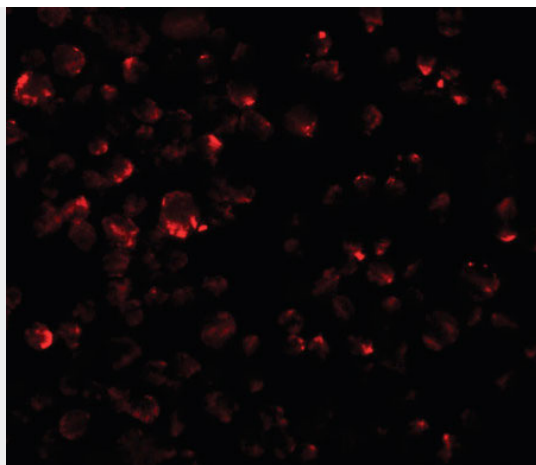
LYRM2 Antibody (C-Terminus) - Images



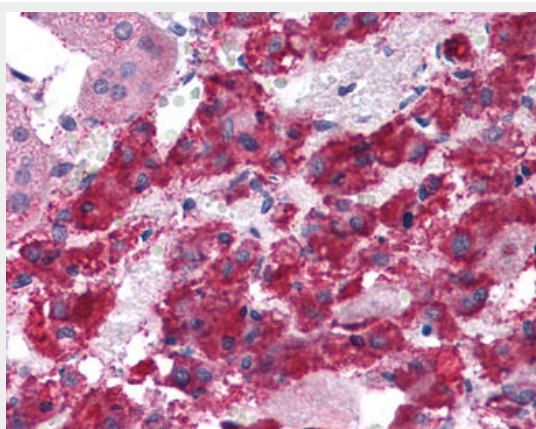
Western blot analysis of ZSCAN4 in mouse lung tissue lysate with ZSCAN4 antibody in (A) the...



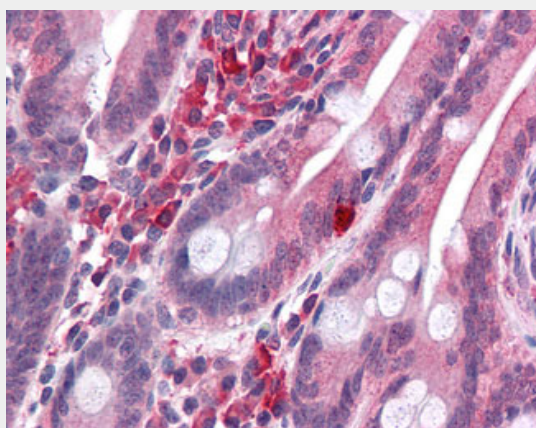
Immunocytochemistry of LYRM2 in A549 cells with LYRM2 antibody at 20 ug/ml.



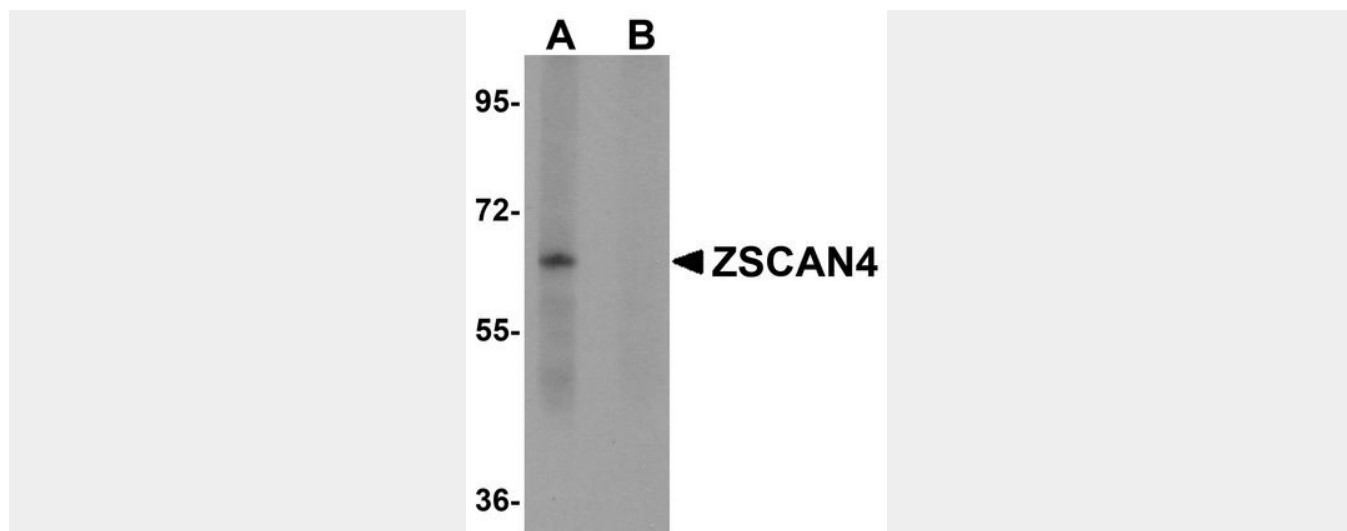
Immunofluorescence of LYRM2 in A549 cells with LYRM2 antibody at 20 ug/ml.



Anti-LYRM2 antibody IHC of human adrenal.



Anti-LYRM2 antibody IHC of human small intestine.



LYRM2 Antibody (C-Terminus) - References

Ota T.,et al.Nat. Genet. 36:40-45(2004).

Mural R.J.,et al.Submitted (SEP-2005) to the EMBL/GenBank/DDBJ databases.

Burkard T.R.,et al.BMC Syst. Biol. 5:17-17(2011).