

CCDC47 Antibody (C-Terminus)
Rabbit Polyclonal Antibody
Catalog # ALS13544**Specification**

CCDC47 Antibody (C-Terminus) - Product Information

Application	IF, WB, IHC
Primary Accession	O96A33
Reactivity	Human, Mouse, Rat
Host	Rabbit
Clonality	Polyclonal
Calculated MW	56kDa KDa

CCDC47 Antibody (C-Terminus) - Additional Information**Gene ID** 57003**Other Names**

Coiled-coil domain-containing protein 47, CCDC47

Target/Specificity

Human CCDC47

Reconstitution & Storage

Short term 4°C, long term aliquot and store at -20°C, avoid freeze thaw cycles. Store undiluted.

Precautions

CCDC47 Antibody (C-Terminus) is for research use only and not for use in diagnostic or therapeutic procedures.

CCDC47 Antibody (C-Terminus) - Protein Information**Name** CCDC47 {ECO:0000303|PubMed:30401460, ECO:0000312|HGNC:HGNC:24856}**Function**

Component of the multi-pass translocon (MPT) complex that mediates insertion of multi-pass membrane proteins into the lipid bilayer of membranes (PubMed: [32814900](http://www.uniprot.org/citations/32814900), PubMed: [32820719](http://www.uniprot.org/citations/32820719), PubMed: [36261522](http://www.uniprot.org/citations/36261522)). The MPT complex takes over after the SEC61 complex: following membrane insertion of the first few transmembrane segments of proteins by the SEC61 complex, the MPT complex occludes the lateral gate of the SEC61 complex to promote insertion of subsequent transmembrane regions (PubMed: [36261522](http://www.uniprot.org/citations/36261522)). Within the MPT complex, the PAT subcomplex sequesters any highly polar regions in the transmembrane domains away from the non-polar membrane environment until they can be buried in the interior of the fully assembled protein (By similarity). Within the PAT subcomplex, CCDC47 occludes the lateral gate of the SEC61 complex (By similarity). Involved in the regulation

of calcium ion homeostasis in the ER (PubMed:30401460). Required for proper protein degradation via the ERAD (ER-associated degradation) pathway (PubMed:25009997). Has an essential role in the maintenance of ER organization during embryogenesis (By similarity).

Cellular Location

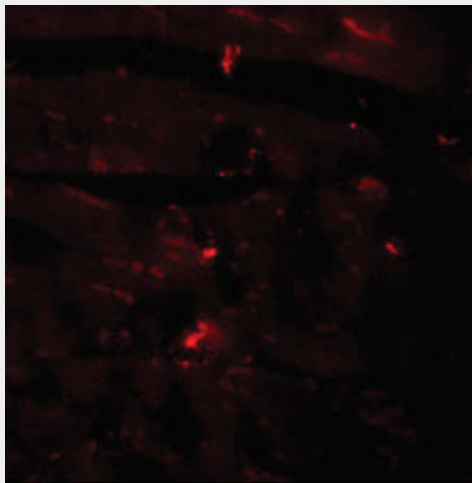
Endoplasmic reticulum membrane; Single-pass type I membrane protein. Rough endoplasmic reticulum membrane {ECO:0000250|UniProtKB:Q9D024}; Single-pass type I membrane protein

CCDC47 Antibody (C-Terminus) - Protocols

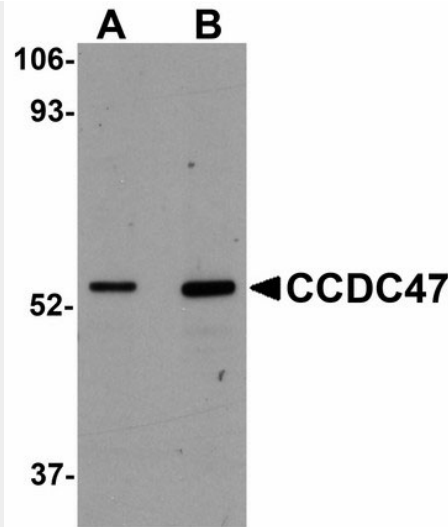
Provided below are standard protocols that you may find useful for product applications.

- [Western Blot](#)
- [Blocking Peptides](#)
- [Dot Blot](#)
- [Immunohistochemistry](#)
- [Immunofluorescence](#)
- [Immunoprecipitation](#)
- [Flow Cytometry](#)
- [Cell Culture](#)

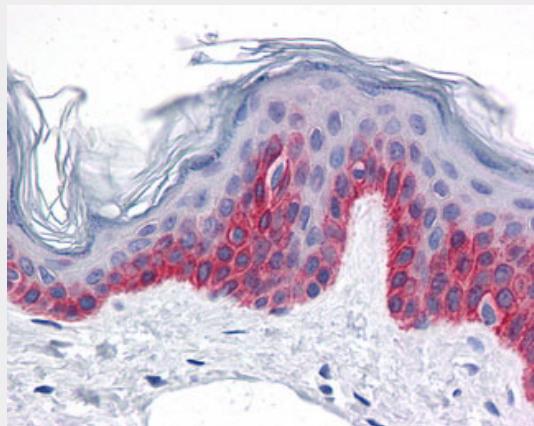
CCDC47 Antibody (C-Terminus) - Images



Immunofluorescence of CDCC47 in mouse heart tissue with CDCC47 antibody at 20 ug/ml.



Western blot of CCDC47 in mouse heart tissue lysate with CCDC47 antibody at (A) 1 and (B) 2 ug/ml.



Anti-CCDC47 antibody IHC of human skin.

CCDC47 Antibody (C-Terminus) - References

- Li Y.,et al.Submitted (JAN-2000) to the EMBL/GenBank/DDBJ databases.
- Ota T.,et al.Nat. Genet. 36:40-45(2004).
- Otsuki T.,et al.DNA Res. 12:117-126(2005).
- Mural R.J.,et al.Submitted (SEP-2005) to the EMBL/GenBank/DDBJ databases.
- Liu B.,et al.Submitted (DEC-1998) to the EMBL/GenBank/DDBJ databases.