

AGTR1 / AT1 Receptor Antibody (Internal)
Rabbit Polyclonal Antibody
Catalog # ALS13536**Specification**

AGTR1 / AT1 Receptor Antibody (Internal) - Product Information

Application	IF
Primary Accession	P30556
Reactivity	Human, Mouse, Rat
Host	Rabbit
Clonality	Polyclonal
Calculated MW	41kDa KDa

AGTR1 / AT1 Receptor Antibody (Internal) - Additional Information**Gene ID** 185**Other Names**

Type-1 angiotensin II receptor, AT1AR, AT1BR, Angiotensin II type-1 receptor, AT1, AGTR1, AGTR1A, AGTR1B, AT2R1, AT2R1B

Target/Specificity

Human AGTR1

Reconstitution & Storage

Short term 4°C, long term aliquot and store at -20°C, avoid freeze thaw cycles. Store undiluted.

Precautions

AGTR1 / AT1 Receptor Antibody (Internal) is for research use only and not for use in diagnostic or therapeutic procedures.

AGTR1 / AT1 Receptor Antibody (Internal) - Protein Information**Name** AGTR1 ([HGNC:336](#))**Function**

Receptor for angiotensin II, a vasoconstricting peptide, which acts as a key regulator of blood pressure and sodium retention by the kidney (PubMed: [15611106](http://www.uniprot.org/citations/15611106), PubMed: [1567413](http://www.uniprot.org/citations/1567413), PubMed: [25913193](http://www.uniprot.org/citations/25913193), PubMed: [26420482](http://www.uniprot.org/citations/26420482), PubMed: [30639100](http://www.uniprot.org/citations/30639100), PubMed: [32079768](http://www.uniprot.org/citations/32079768), PubMed: [8987975](http://www.uniprot.org/citations/8987975)). The activated receptor in turn couples to G-alpha proteins G(q) (GNAQ, GNA11, GNA14 or GNA15) and thus activates phospholipase C and increases the cytosolic Ca(2+) concentrations, which in turn triggers cellular responses such as stimulation of protein kinase C (PubMed: [15611106](http://www.uniprot.org/citations/15611106)).

href="http://www.uniprot.org/citations/15611106" target="_blank">15611106).

Cellular Location

Cell membrane; Multi-pass membrane protein

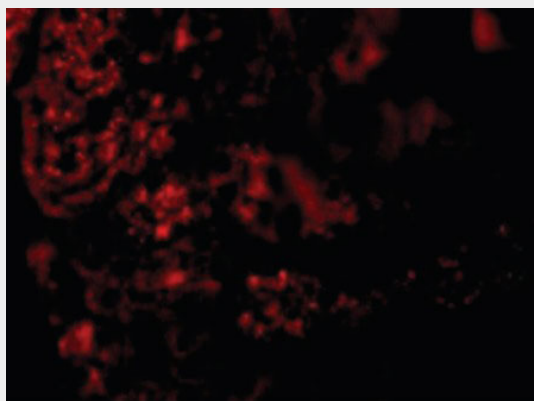
Tissue Location

Liver, lung, adrenal and adrenocortical adenomas.

AGTR1 / AT1 Receptor Antibody (Internal) - Protocols

Provided below are standard protocols that you may find useful for product applications.

- [Western Blot](#)
- [Blocking Peptides](#)
- [Dot Blot](#)
- [Immunohistochemistry](#)
- [Immunofluorescence](#)
- [Immunoprecipitation](#)
- [Flow Cytometry](#)
- [Cell Culture](#)

AGTR1 / AT1 Receptor Antibody (Internal) - Images

Immunofluorescence of AGTR1 in Mouse Kidney cells with AGTR1 antibody at 20 ug/ml.

AGTR1 / AT1 Receptor Antibody (Internal) - Background

Receptor for angiotensin II. Mediates its action by association with G proteins that activate a phosphatidylinositol- calcium second messenger system.

AGTR1 / AT1 Receptor Antibody (Internal) - References

Mauzy C.A., et al. *Biochem. Biophys. Res. Commun.* 186:277-284(1992).
Furuta H., et al. *Biochem. Biophys. Res. Commun.* 183:8-13(1992).
Bergsma D.J., et al. *Biochem. Biophys. Res. Commun.* 183:989-995(1992).
Takayanagi R., et al. *Biochem. Biophys. Res. Commun.* 183:910-916(1992).
Curnow K.M., et al. *Mol. Endocrinol.* 6:1113-1118(1992).