

Fibulin-3 / EFEMP1 Antibody (C-Terminus)
Rabbit Polyclonal Antibody
Catalog # ALS13529**Specification**

Fibulin-3 / EFEMP1 Antibody (C-Terminus) - Product Information

Application	ICC, IF, IHC
Primary Accession	Q12805
Reactivity	Human, Mouse, Rat
Host	Rabbit
Clonality	Polyclonal
Calculated MW	55kDa KDa

Fibulin-3 / EFEMP1 Antibody (C-Terminus) - Additional Information**Gene ID** 2202**Other Names**

EGF-containing fibulin-like extracellular matrix protein 1, Extracellular protein S1-5, Fibrillin-like protein, Fibulin-3, FIBL-3, EFEMP1, FBLN3, FBNL

Target/Specificity

Human EFEMP1

Reconstitution & Storage

Short term 4°C, long term aliquot and store at -20°C, avoid freeze thaw cycles. Store undiluted.

Precautions

Fibulin-3 / EFEMP1 Antibody (C-Terminus) is for research use only and not for use in diagnostic or therapeutic procedures.

Fibulin-3 / EFEMP1 Antibody (C-Terminus) - Protein Information**Name** EFEMP1**Synonyms** FBLN3, FBNL**Function**

Binds EGFR, the EGF receptor, inducing EGFR autophosphorylation and the activation of downstream signaling pathways. May play a role in cell adhesion and migration. May function as a negative regulator of chondrocyte differentiation. In the olfactory epithelium, it may regulate glial cell migration, differentiation and the ability of glial cells to support neuronal neurite outgrowth.

Cellular Location

Secreted, extracellular space. Secreted, extracellular space, extracellular matrix Note=Localizes to the lamina propria underneath the olfactory epithelium.

Tissue Location

In the eye, associated with photoreceptor outer and inner segment regions, the nerve fiber layer, outer nuclear layer and inner and outer plexiform layers of the retina

Fibulin-3 / EFEMP1 Antibody (C-Terminus) - Protocols

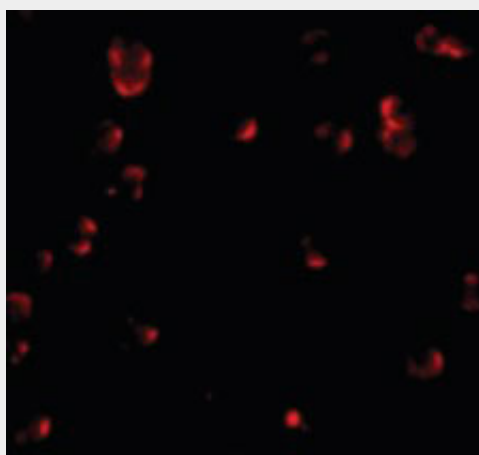
Provided below are standard protocols that you may find useful for product applications.

- [Western Blot](#)
- [Blocking Peptides](#)
- [Dot Blot](#)
- [Immunohistochemistry](#)
- [Immunofluorescence](#)
- [Immunoprecipitation](#)
- [Flow Cytometry](#)
- [Cell Culture](#)

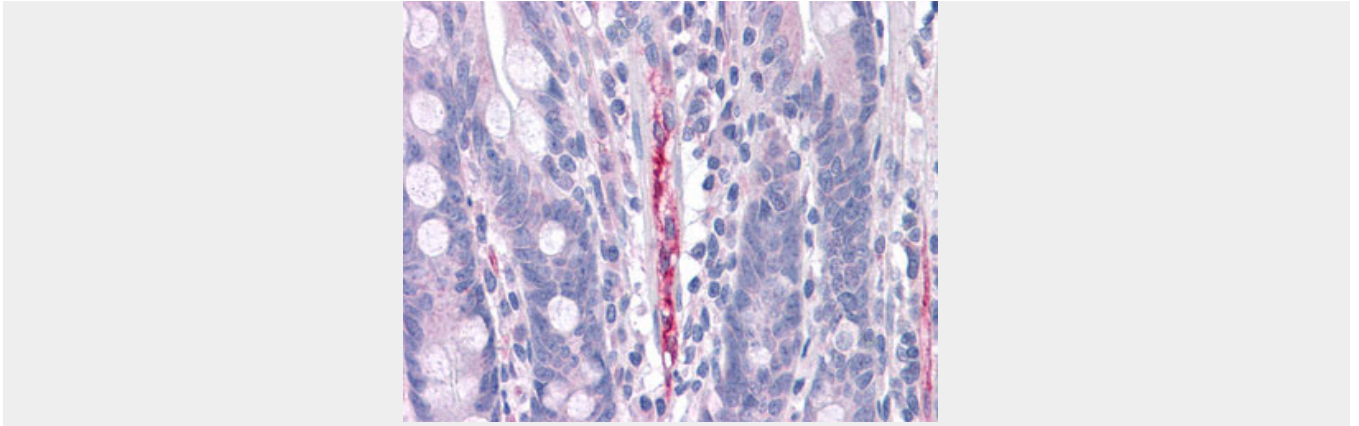
Fibulin-3 / EFEMP1 Antibody (C-Terminus) - Images



Immunocytochemistry of Fibulin 3 in HeLa cells with Fibulin 3 antibody at 20 ug/ml.



Immunofluorescence of Fibulin 3 in HeLa cells with Fibulin 3 antibody at 20 ug/ml.



Anti-EFEMP1 antibody IHC of human small intestine, capillary.

Fibulin-3 / EFEMP1 Antibody (C-Terminus) - Background

Binds EGFR, the EGF receptor, inducing EGFR autophosphorylation and the activation of downstream signaling pathways. May play a role in cell adhesion and migration. May function as a negative regulator of chondrocyte differentiation. In the olfactory epithelium, it may regulate glial cell migration, differentiation and the ability of glial cells to support neuronal neurite outgrowth.

Fibulin-3 / EFEMP1 Antibody (C-Terminus) - References

- Lecka-Czernik B.,et al.Mol. Cell. Biol. 15:120-128(1995).
- Ikegawa S.,et al.Genomics 35:590-592(1996).
- Giltay R.,et al.Matrix Biol. 18:469-480(1999).
- Sauer C.G.,et al.Ophthalmic Genet. 22:27-34(2001).
- Ota T.,et al.Nat. Genet. 36:40-45(2004).