

SLC44A2 / CTL2 Antibody (clone 3D11)
Mouse Monoclonal Antibody
Catalog # ALS13494

Specification

SLC44A2 / CTL2 Antibody (clone 3D11) - Product Information

| | |
|-------------------|------------------------|
| Application | IHC |
| Primary Accession | Q8IWA5 |
| Reactivity | Human |
| Host | Mouse |
| Clonality | Monoclonal |
| Calculated MW | 80kDa KDa |

SLC44A2 / CTL2 Antibody (clone 3D11) - Additional Information

Gene ID 57153

Other Names

Choline transporter-like protein 2, Solute carrier family 44 member 2, SLC44A2, CTL2

Reconstitution & Storage

Store at -20°C. Aliquot to avoid freeze/thaw cycles.

Precautions

SLC44A2 / CTL2 Antibody (clone 3D11) is for research use only and not for use in diagnostic or therapeutic procedures.

SLC44A2 / CTL2 Antibody (clone 3D11) - Protein Information

Name SLC44A2 ([HGNC:17292](#))

Synonyms CTL2

Function

[Isoform 1]: Choline/H⁺ antiporter, mainly in mitochondria (PubMed:[10677542](http://www.uniprot.org/citations/10677542), PubMed:[20665236](http://www.uniprot.org/citations/20665236), PubMed:[23651124](http://www.uniprot.org/citations/23651124), PubMed:[33789160](http://www.uniprot.org/citations/33789160)). Also acts as a low-affinity ethanolamine/H⁺ antiporter, regulating the supply of extracellular ethanolamine (Etn) for the CDP-Etn pathway, redistribute intracellular Etn and balance the CDP-Cho and CDP-Etn arms of the Kennedy pathway (PubMed:[33789160](http://www.uniprot.org/citations/33789160)).

Cellular Location

Cell membrane; Multi-pass membrane protein. Mitochondrion outer membrane; Multi-pass membrane protein. Note=Mainly expressed in mitochondria {ECO:0000250|UniProtKB:B4F795}

Tissue Location

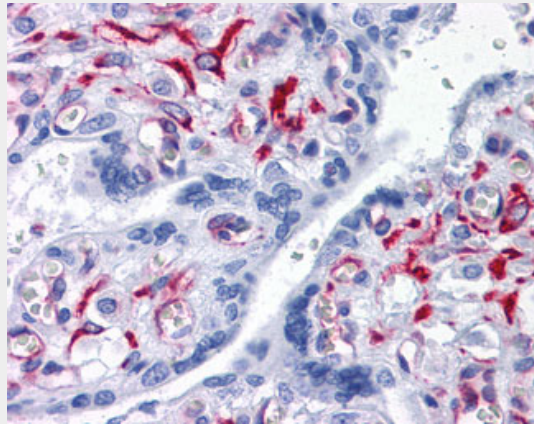
Present in supporting cells of the inner ear (at protein level).

SLC44A2 / CTL2 Antibody (clone 3D11) - Protocols

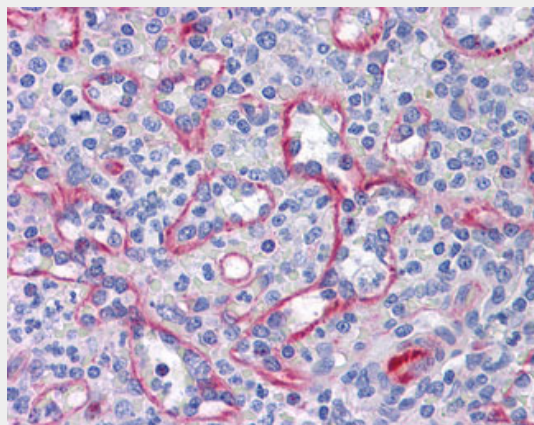
Provided below are standard protocols that you may find useful for product applications.

- [Western Blot](#)
- [Blocking Peptides](#)
- [Dot Blot](#)
- [Immunohistochemistry](#)
- [Immunofluorescence](#)
- [Immunoprecipitation](#)
- [Flow Cytometry](#)
- [Cell Culture](#)

SLC44A2 / CTL2 Antibody (clone 3D11) - Images



Anti-SLC44A2 antibody IHC of human placenta.



Anti-SLC44A2 antibody IHC of human spleen.

SLC44A2 / CTL2 Antibody (clone 3D11) - Background

Isoform 1, but not isoform 3, exhibits some choline transporter activity.

SLC44A2 / CTL2 Antibody (clone 3D11) - References

O'Regan S.,et al.Proc. Natl. Acad. Sci. U.S.A. 97:1835-1840(2000).
Nair T.S.,et al.J. Neurosci. 24:1772-1779(2004).
Santoso S.S.,et al.Submitted (APR-2011) to the EMBL/GenBank/DDBJ databases.
Ota T.,et al.Nat. Genet. 36:40-45(2004).
Grimwood J.,et al.Nature 428:529-535(2004).