

KRT20 / CK20 / Cytokeratin 20 Antibody (clone 2G3-1C8)
Mouse Monoclonal Antibody
Catalog # ALS13489**Specification**

KRT20 / CK20 / Cytokeratin 20 Antibody (clone 2G3-1C8) - Product Information

Application	WB, IF, IHC
Primary Accession	P35900
Reactivity	Human
Host	Mouse
Clonality	Monoclonal
Calculated MW	48kDa KDa

KRT20 / CK20 / Cytokeratin 20 Antibody (clone 2G3-1C8) - Additional Information**Gene ID** 54474**Other Names**

Keratin, type I cytoskeletal 20, Cytokeratin-20, CK-20, Keratin-20, K20, Protein IT, KRT20

Reconstitution & Storage

Store at -20°C. Aliquot to avoid freeze/thaw cycles.

Precautions

KRT20 / CK20 / Cytokeratin 20 Antibody (clone 2G3-1C8) is for research use only and not for use in diagnostic or therapeutic procedures.

KRT20 / CK20 / Cytokeratin 20 Antibody (clone 2G3-1C8) - Protein Information**Name** KRT20**Function**

Plays a significant role in maintaining keratin filament organization in intestinal epithelia. When phosphorylated, plays a role in the secretion of mucin in the small intestine (By similarity).

Cellular Location

Cytoplasm

Tissue Location

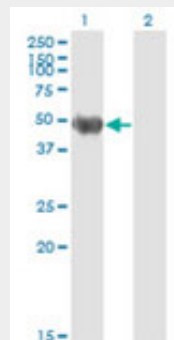
Expressed predominantly in the intestinal epithelium. Expressed in luminal cells of colonic mucosa. Also expressed in the Merkel cells of keratinized oral mucosa; specifically at the tips of some rete ridges of the gingival mucosa, in the basal layer of the palatal mucosa and in the taste buds of lingual mucosa

KRT20 / CK20 / Cytokeratin 20 Antibody (clone 2G3-1C8) - Protocols

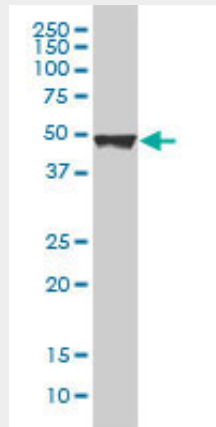
Provided below are standard protocols that you may find useful for product applications.

- [Western Blot](#)
- [Blocking Peptides](#)
- [Dot Blot](#)
- [Immunohistochemistry](#)
- [Immunofluorescence](#)
- [Immunoprecipitation](#)
- [Flow Cytometry](#)
- [Cell Culture](#)

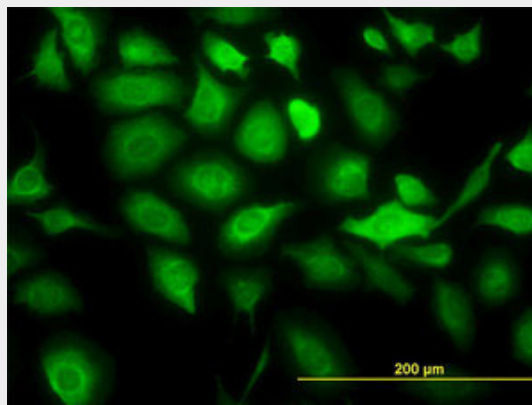
KRT20 / CK20 / Cytokeratin 20 Antibody (clone 2G3-1C8) - Images



Western blot of KRT20 expression in transfected 293T cell line by KRT20 monoclonal antibody,...

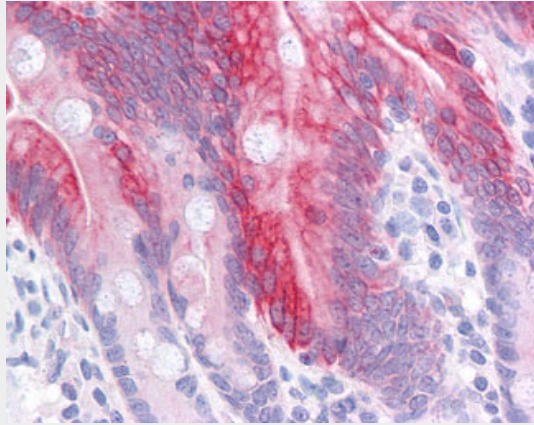


KRT20 monoclonal antibody, clone 2G3-1C8 Western blot of KRT20 expression in A-431.

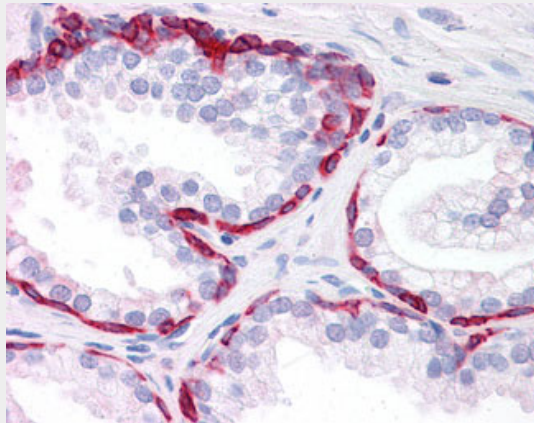


Immunofluorescence of monoclonal antibody to KRT20 on HeLa cell (antibody concentration 10

ug/ml).



Anti-KRT20 / Cytokeratin 20 antibody IHC of human small intestine.



Anti-KRT20 / Cytokeratin 20 antibody IHC of human prostate.

KRT20 / CK20 / Cytokeratin 20 Antibody (clone 2G3-1C8) - Background

Plays a significant role in maintaining keratin filament organization in intestinal epithelia. When phosphorylated, plays a role in the secretion of mucin in the small intestine (By similarity).

KRT20 / CK20 / Cytokeratin 20 Antibody (clone 2G3-1C8) - References

- Moll R.,et al.Differentiation 53:75-93(1993).
- Ota T.,et al.Nat. Genet. 36:40-45(2004).
- Zhou Q.,et al.J. Biol. Chem. 281:16453-16461(2006).
- Calnek D.,et al.Differentiation 53:95-104(1993).
- Moll R.,et al.J. Cell Biol. 111:567-580(1990).