

**FTL / Ferritin Light Chain Antibody (C-Terminus)**  
**Goat Polyclonal Antibody**  
**Catalog # ALS13365****Specification**

---

**FTL / Ferritin Light Chain Antibody (C-Terminus) - Product Information**

Application	WB, IHC
Primary Accession	<a href="#">P02792</a>
Reactivity	Human, Mouse, Rat, Rabbit, Hamster, Monkey, Pig, Horse, Bovine, Dog
Host	Goat
Clonality	Polyclonal
Calculated MW	20kDa KDa

**FTL / Ferritin Light Chain Antibody (C-Terminus) - Additional Information****Gene ID** 2512**Other Names**

Ferritin light chain, Ferritin L subunit, FTL

**Target/Specificity**

Human FTL.

**Reconstitution & Storage**

Store at -20°C. Minimize freezing and thawing.

**Precautions**

FTL / Ferritin Light Chain Antibody (C-Terminus) is for research use only and not for use in diagnostic or therapeutic procedures.

**FTL / Ferritin Light Chain Antibody (C-Terminus) - Protein Information****Name** FTL**Function**

Stores iron in a soluble, non-toxic, readily available form. Important for iron homeostasis. Iron is taken up in the ferrous form and deposited as ferric hydroxides after oxidation. Also plays a role in delivery of iron to cells. Mediates iron uptake in capsule cells of the developing kidney (By similarity). Delivery to lysosomes by the cargo receptor NCOA4 for autophagic degradation and release of iron (PubMed:<http://www.uniprot.org/citations/24695223> target="\_blank">24695223</a>).

**Cellular Location**

Cytoplasmic vesicle, autophagosome. Cytoplasm {ECO:0000250|UniProtKB:P29391}. Autolysosome {ECO:0000250|UniProtKB:P29391}

## FTL / Ferritin Light Chain Antibody (C-Terminus) - Protocols

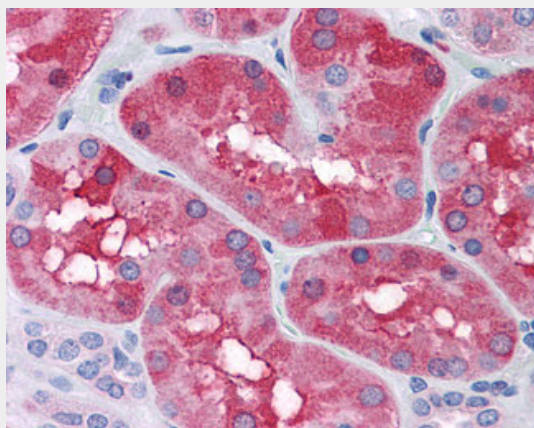
Provided below are standard protocols that you may find useful for product applications.

- [Western Blot](#)
- [Blocking Peptides](#)
- [Dot Blot](#)
- [Immunohistochemistry](#)
- [Immunofluorescence](#)
- [Immunoprecipitation](#)
- [Flow Cytometry](#)
- [Cell Culture](#)

## FTL / Ferritin Light Chain Antibody (C-Terminus) - Images



Antibody (0.1 ug/ml) staining of Human Placenta lysate (35 ug protein in RIPA buffer).



Anti-FTL antibody IHC of human kidney.

## FTL / Ferritin Light Chain Antibody (C-Terminus) - Background

Stores iron in a soluble, non-toxic, readily available form. Important for iron homeostasis. Iron is taken up in the ferrous form and deposited as ferric hydroxides after oxidation. Also plays a role in delivery of iron to cells. Mediates iron uptake in capsule cells of the developing kidney (By similarity).

## FTL / Ferritin Light Chain Antibody (C-Terminus) - References

Boyd D., et al. J. Biol. Chem. 260:11755-11761(1985).  
Dorner M.H., et al. Proc. Natl. Acad. Sci. U.S.A. 82:3139-3143(1985).

Santoro C., et al. Nucleic Acids Res. 14:2863-2876(1986).

Jordan T.P., et al. Submitted (DEC-2002) to the EMBL/GenBank/DDBJ databases.

Ebert L., et al. Submitted (JUN-2004) to the EMBL/GenBank/DDBJ databases.