

LDHB / Lactate Dehydrogenase B Antibody (clone 2H6)
Mouse Monoclonal Antibody
Catalog # ALS13351

Specification

LDHB / Lactate Dehydrogenase B Antibody (clone 2H6) - Product Information

Application	WB, IF, IHC
Primary Accession	P07195
Reactivity	Human
Host	Mouse
Clonality	Monoclonal
Calculated MW	37kDa kDa

LDHB / Lactate Dehydrogenase B Antibody (clone 2H6) - Additional Information

Gene ID 3945

Other Names

L-lactate dehydrogenase B chain, LDH-B, 1.1.1.27, LDH heart subunit, LDH-H, Renal carcinoma antigen NY-REN-46, LDHB

Reconstitution & Storage

Store at -20°C. Aliquot to avoid freeze/thaw cycles.

Precautions

LDHB / Lactate Dehydrogenase B Antibody (clone 2H6) is for research use only and not for use in diagnostic or therapeutic procedures.

LDHB / Lactate Dehydrogenase B Antibody (clone 2H6) - Protein Information

Name LDHB

Function

Interconverts simultaneously and stereospecifically pyruvate and lactate with concomitant interconversion of NADH and NAD(+).

Cellular Location

Cytoplasm. Mitochondrion inner membrane; Peripheral membrane protein

Tissue Location

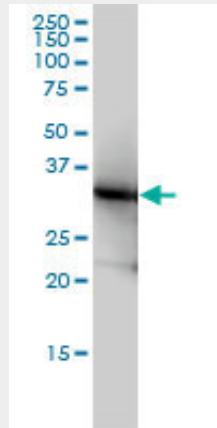
Predominantly expressed in aerobic tissues such as cardiac muscle.

LDHB / Lactate Dehydrogenase B Antibody (clone 2H6) - Protocols

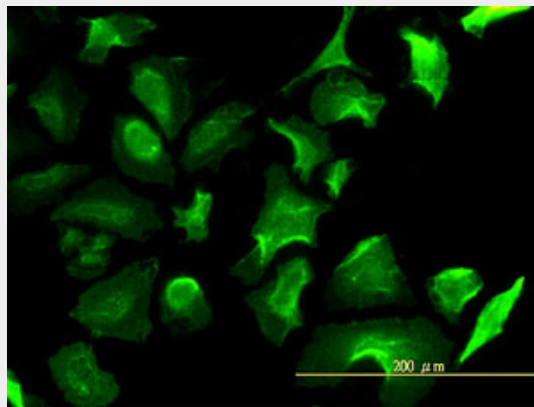
Provided below are standard protocols that you may find useful for product applications.

- [Western Blot](#)
- [Blocking Peptides](#)
- [Dot Blot](#)
- [Immunohistochemistry](#)
- [Immunofluorescence](#)
- [Immunoprecipitation](#)
- [Flow Cytometry](#)
- [Cell Culture](#)

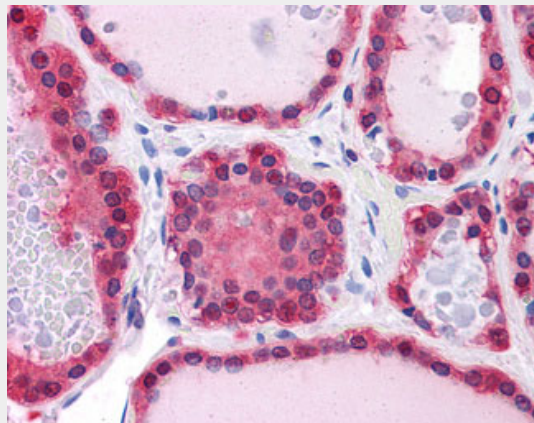
LDHB / Lactate Dehydrogenase B Antibody (clone 2H6) - Images



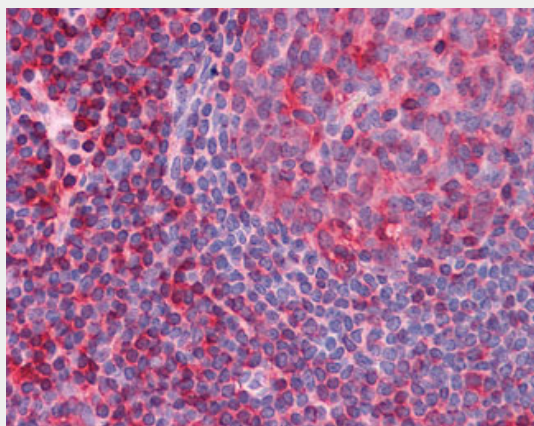
LDHB monoclonal antibody clone 2H6 Western blot of LDHB expression in HeLa.



Immunofluorescence of monoclonal antibody to LDHB on HeLa cell (antibody concentration 10 ug/ml).



Anti-LDHB antibody IHC of human thyroid.



Anti-LDHB antibody IHC of human tonsil.

LDHB / Lactate Dehydrogenase B Antibody (clone 2H6) - References

- Takeo T., et al. *Biochem. J.* 257:921-924(1989).
Sakai I., et al. *Biochem. J.* 248:933-936(1987).
Bienvenut W.V., et al. Submitted (MAY-2005) to UniProtKB.
Lubec G., et al. Submitted (DEC-2008) to UniProtKB.
Scanlan M.J., et al. *Int. J. Cancer* 83:456-464(1999).