

**APH1A / APH-1 Antibody (Internal)**  
Goat Polyclonal Antibody  
Catalog # ALS13336**Specification**

---

**APH1A / APH-1 Antibody (Internal) - Product Information**

Application	WB, IHC
Primary Accession	<a href="#">O96BI3</a>
Reactivity	Human, Mouse, Rat, Rabbit, Hamster, Monkey, Pig, Horse, Bovine, Dog
Host	Goat
Clonality	Polyclonal
Calculated MW	29kDa KDa

**APH1A / APH-1 Antibody (Internal) - Additional Information**

Gene ID 51107

**Other Names**

Gamma-secretase subunit APH-1A, APH-1a, Aph-1alpha, Presenilin-stabilization factor, APH1A, PSF

**Target/Specificity**

Human APH1A. This antibody is expected to recognize isoform 1 (NP\_001071096.1) and isoform 2 (NP\_057106.2).

**Reconstitution & Storage**

Store at -20°C. Minimize freezing and thawing.

**Precautions**

APH1A / APH-1 Antibody (Internal) is for research use only and not for use in diagnostic or therapeutic procedures.

**APH1A / APH-1 Antibody (Internal) - Protein Information**

Name APH1A

Synonyms PSF

**Function**

Non-catalytic subunit of the gamma-secretase complex, an endoprotease complex that catalyzes the intramembrane cleavage of integral membrane proteins such as Notch receptors and APP (amyloid- beta precursor protein) (PubMed: [12297508](http://www.uniprot.org/citations/12297508), PubMed: [12522139](http://www.uniprot.org/citations/12522139), PubMed: [12679784](http://www.uniprot.org/citations/12679784), PubMed: [12763021](http://www.uniprot.org/citations/12763021), PubMed: [25043039](http://www.uniprot.org/citations/25043039), PubMed: [26280335](http://www.uniprot.org/citations/26280335), PubMed: [30598546](http://www.uniprot.org/citations/30598546))

target="\_blank">30598546</a>, PubMed:<a href="http://www.uniprot.org/citations/30630874" target="\_blank">30630874</a>). Required for normal gamma-secretase assembly (PubMed:<a href="http://www.uniprot.org/citations/12471034" target="\_blank">12471034</a>, PubMed:<a href="http://www.uniprot.org/citations/12522139" target="\_blank">12522139</a>, PubMed:<a href="http://www.uniprot.org/citations/12763021" target="\_blank">12763021</a>, PubMed:<a href="http://www.uniprot.org/citations/19369254" target="\_blank">19369254</a>). The gamma-secretase complex plays a role in Notch and Wnt signaling cascades and regulation of downstream processes via its role in processing key regulatory proteins, and by regulating cytosolic CTNBN1 levels (Probable).

#### Cellular Location

Endoplasmic reticulum membrane; Multi-pass membrane protein. Golgi apparatus, Golgi stack membrane; Multi-pass membrane protein. Note=Predominantly located in the endoplasmic reticulum and in the cis-Golgi

#### Tissue Location

Widely expressed. Expressed in leukocytes, lung, placenta, small intestine, liver, kidney, spleen thymus, skeletal muscle, heart and brain. Isoform 1 and isoform 2 are nearly expressed at the same level.

### APH1A / APH-1 Antibody (Internal) - Protocols

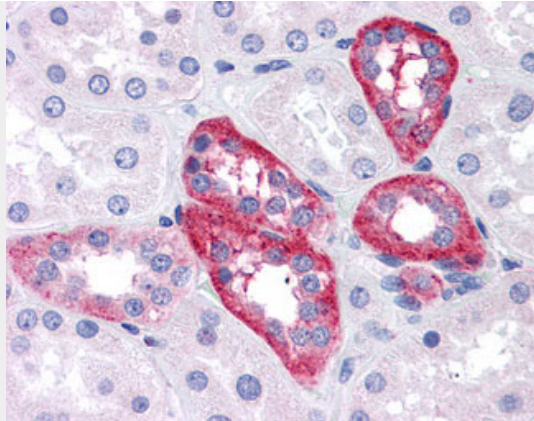
Provided below are standard protocols that you may find useful for product applications.

- [Western Blot](#)
- [Blocking Peptides](#)
- [Dot Blot](#)
- [Immunohistochemistry](#)
- [Immunofluorescence](#)
- [Immunoprecipitation](#)
- [Flow Cytometry](#)
- [Cell Culture](#)

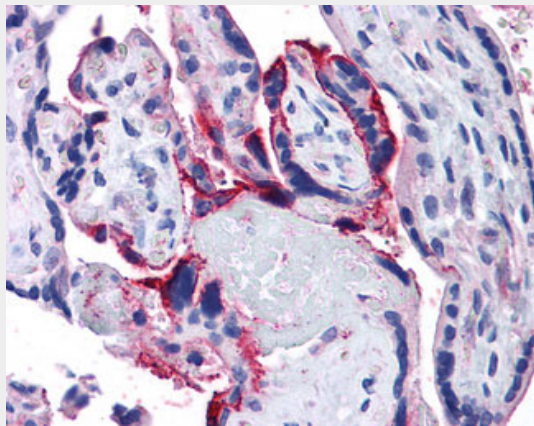
### APH1A / APH-1 Antibody (Internal) - Images



Antibody (0.05 ug/ml) staining of Human Brain (Cerebral Cortex) lysate (35 ug protein in RIPA...



Anti-APH1A antibody IHC of human kidney.



Anti-APH1A antibody IHC of human placenta.

#### **APH1A / APH-1 Antibody (Internal) - Background**

Essential subunit of the gamma-secretase complex, an endoprotease complex that catalyzes the intramembrane cleavage of integral proteins such as Notch receptors and APP (beta-amyloid precursor protein). It probably represents a stabilizing cofactor for the presenilin homodimer that promotes the formation of a stable complex.

#### **APH1A / APH-1 Antibody (Internal) - References**

- Lee S.-F.,et al.J. Biol. Chem. 277:45013-45019(2002).
- Lee H.-J.,et al.Submitted (MAY-2002) to the EMBL/GenBank/DDBJ databases.
- Lai C.-H.,et al.Genome Res. 10:703-713(2000).
- Clark H.F.,et al.Genome Res. 13:2265-2270(2003).
- Ota T.,et al.Nat. Genet. 36:40-45(2004).