

**CHGA / Chromogranin A Antibody (Internal)**  
**Goat Polyclonal Antibody**  
**Catalog # ALS13318**

**Specification**

---

**CHGA / Chromogranin A Antibody (Internal) - Product Information**

Application	WB, IHC
Primary Accession	<a href="#">P10645</a>
Reactivity	Human, Monkey
Host	Goat
Clonality	Polyclonal
Calculated MW	51kDa KDa

**CHGA / Chromogranin A Antibody (Internal) - Additional Information**

**Gene ID** 1113

**Other Names**

Chromogranin-A, CgA, Pituitary secretory protein I, SP-I, Vasostatin-1, Vasostatin I, Vasostatin-2, Vasostatin II, EA-92, ES-43, Pancreastatin, SS-18, WA-8, WE-14, LF-19, AL-11, GV-19, GR-44, ER-37, CHGA

**Target/Specificity**

Human CHGA / Chromogranin A.

**Reconstitution & Storage**

Store at -20°C. Minimize freezing and thawing.

**Precautions**

CHGA / Chromogranin A Antibody (Internal) is for research use only and not for use in diagnostic or therapeutic procedures.

**CHGA / Chromogranin A Antibody (Internal) - Protein Information**

**Name** CHGA

**Function**

[Pancreastatin]: Strongly inhibits glucose induced insulin release from the pancreas. [Serpinin]: Regulates granule biogenesis in endocrine cells by up-regulating the transcription of protease nexin 1 (SERPINE2) via a cAMP-PKA-SP1 pathway. This leads to inhibition of granule protein degradation in the Golgi complex which in turn promotes granule formation.

**Cellular Location**

[Serpinin]: Secreted {ECO:0000250|UniProtKB:P26339}. Cytoplasmic vesicle, secretory vesicle {ECO:0000250|UniProtKB:P26339}. Note=Pyroglutaminated serpinin localizes to secretory vesicle. {ECO:0000250|UniProtKB:P26339}

**Tissue Location**

Detected in cerebrospinal fluid (at protein level) (PubMed:25326458). Detected in urine (at protein level) (PubMed:37453717).

### CHGA / Chromogranin A Antibody (Internal) - Protocols

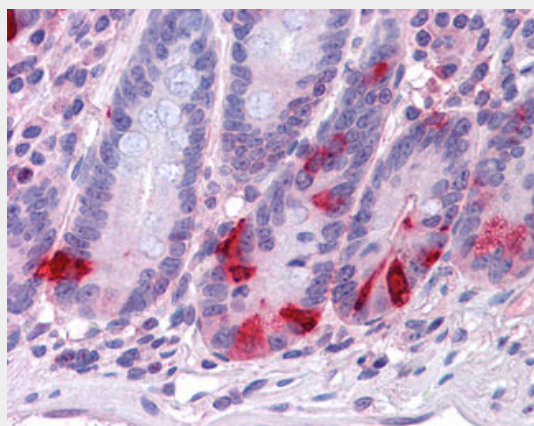
Provided below are standard protocols that you may find useful for product applications.

- [Western Blot](#)
- [Blocking Peptides](#)
- [Dot Blot](#)
- [Immunohistochemistry](#)
- [Immunofluorescence](#)
- [Immunoprecipitation](#)
- [Flow Cytometry](#)
- [Cell Culture](#)

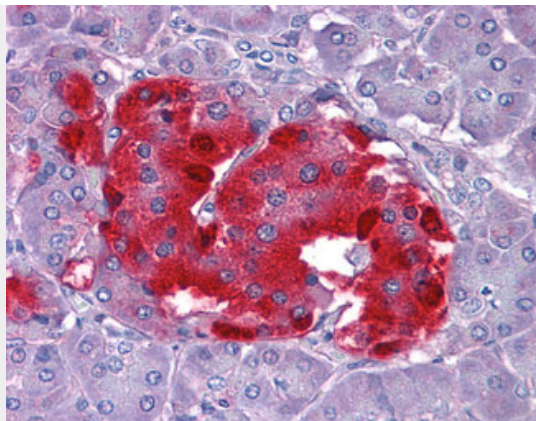
### CHGA / Chromogranin A Antibody (Internal) - Images



CHGA antibody (0.1 ug/ml) staining of human kidney lysate (35 ug protein/ml in RIPA buffer).



Anti-CHGA / Chromogranin A antibody IHC of human small intestine.



Anti-CHGA / Chromogranin A antibody IHC of human pancreas.

### **CHGA / Chromogranin A Antibody (Internal) - Background**

Pancreastatin strongly inhibits glucose induced insulin release from the pancreas.

### **CHGA / Chromogranin A Antibody (Internal) - References**

- Konecki D.S.,et al.J. Biol. Chem. 262:17026-17030(1987).  
Helman L.J.,et al.J. Biol. Chem. 263:11559-11563(1988).  
Mouland A.J.,et al.J. Biol. Chem. 269:6918-6926(1994).  
Mouland A.J.,et al.Submitted (JUL-1999) to the EMBL/GenBank/DDBJ databases.  
Kalnine N.,et al.Submitted (MAY-2003) to the EMBL/GenBank/DDBJ databases.