

MRNP41 / RAE1 Antibody (C-Terminus)
Goat Polyclonal Antibody
Catalog # ALS13312**Specification**

MRNP41 / RAE1 Antibody (C-Terminus) - Product Information

Application	IHC
Primary Accession	P78406
Reactivity	Human, Mouse, Rat, Rabbit, Zebrafish, Hamster, Monkey, Pig, Chicken, Horse, Xenopus, Bovine, Dog
Host	Goat
Clonality	Polyclonal
Calculated MW	41kDa KDa

MRNP41 / RAE1 Antibody (C-Terminus) - Additional Information**Gene ID** 8480**Other Names**

mRNA export factor, Rae1 protein homolog, mRNA-associated protein mrnp 41, RAE1, MRNP41

Target/Specificity

Human RAE1. NP_003601 and NP_001015885 represent identical proteins.

Reconstitution & Storage

Store at -20°C. Minimize freezing and thawing.

Precautions

MRNP41 / RAE1 Antibody (C-Terminus) is for research use only and not for use in diagnostic or therapeutic procedures.

MRNP41 / RAE1 Antibody (C-Terminus) - Protein Information**Name** RAE1**Synonyms** MRNP41**Function**

Acts as a mRNA export factor involved in nucleocytoplasmic transport (PubMed: [20498086](http://www.uniprot.org/citations/20498086), PubMed: [33849972](http://www.uniprot.org/citations/33849972)). Plays a role in mitotic bipolar spindle formation (PubMed: [17172455](http://www.uniprot.org/citations/17172455)). May function in attaching cytoplasmic mRNPs to the cytoskeleton both directly or indirectly (PubMed: [17172455](http://www.uniprot.org/citations/17172455)).

Cellular Location

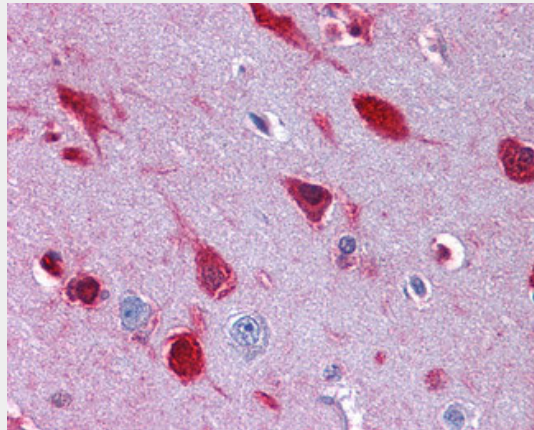
Cytoplasm. Nucleus. Cytoplasm, cytoskeleton, spindle pole. Nucleus envelope. Note=Recruited from interphase nuclei to spindle MTs during mitosis.

MRNP41 / RAE1 Antibody (C-Terminus) - Protocols

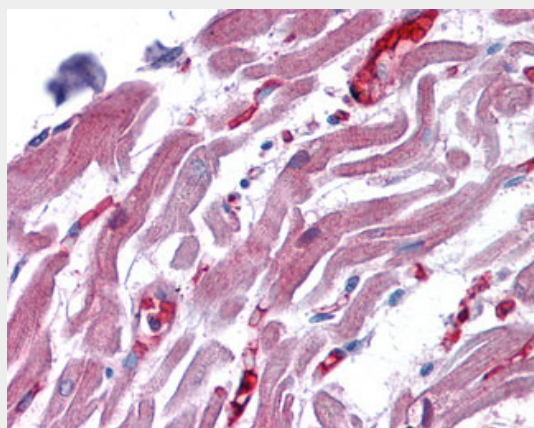
Provided below are standard protocols that you may find useful for product applications.

- [Western Blot](#)
- [Blocking Peptides](#)
- [Dot Blot](#)
- [Immunohistochemistry](#)
- [Immunofluorescence](#)
- [Immunoprecipitation](#)
- [Flow Cytometry](#)
- [Cell Culture](#)

MRNP41 / RAE1 Antibody (C-Terminus) - Images



Anti-RAE1 antibody IHC of human brain, cortex.



Anti-RAE1 antibody IHC of human heart.

MRNP41 / RAE1 Antibody (C-Terminus) - Background

Binds mRNA. May function in nucleocytoplasmic transport and in directly or indirectly attaching cytoplasmic mRNPs to the cytoskeleton.

MRNP41 / RAE1 Antibody (C-Terminus) - References

- Bharathi A.,et al.Gene 198:251-258(1997).
Kraemer D.M.,et al.Proc. Natl. Acad. Sci. U.S.A. 94:9119-9124(1997).
Lu L.,et al.Submitted (JUL-2003) to the EMBL/GenBank/DDBJ databases.
Ota T.,et al.Nat. Genet. 36:40-45(2004).
Deloukas P.,et al.Nature 414:865-871(2001).