

**CTSK / Cathepsin K Antibody (clone 2F1)**  
**Mouse Monoclonal Antibody**  
**Catalog # ALS13296****Specification**

---

**CTSK / Cathepsin K Antibody (clone 2F1) - Product Information**

Application	<b>WB, IHC</b>
Primary Accession	<a href="#">P43235</a>
Reactivity	<b>Human</b>
Host	<b>Mouse</b>
Clonality	<b>Monoclonal</b>
Calculated MW	<b>37kDa KDa</b>

**CTSK / Cathepsin K Antibody (clone 2F1) - Additional Information****Gene ID** 1513**Other Names**

Cathepsin K, 3.4.22.38, Cathepsin O, Cathepsin O2, Cathepsin X, CTSK, CTSO, CTSO2

**Reconstitution & Storage**

Store at -20°C. Aliquot to avoid freeze/thaw cycles.

**Precautions**

CTSK / Cathepsin K Antibody (clone 2F1) is for research use only and not for use in diagnostic or therapeutic procedures.

**CTSK / Cathepsin K Antibody (clone 2F1) - Protein Information****Name** CTSK**Synonyms** CTSO, CTSO2**Function**

Thiol protease involved in osteoclastic bone resorption and may participate partially in the disorder of bone remodeling. Displays potent endoprotease activity against fibrinogen at acid pH. May play an important role in extracellular matrix degradation. Involved in the release of thyroid hormone thyroxine (T4) by limited proteolysis of TG/thyroglobulin in the thyroid follicle lumen (PubMed:<a href="http://www.uniprot.org/citations/11082042" target="\_blank">11082042</a>).

**Cellular Location**

Lysosome. Secreted. Apical cell membrane; Peripheral membrane protein; Extracellular side. Note=Localizes to the lumen of thyroid follicles and to the apical membrane of thyroid epithelial cells

**Tissue Location**

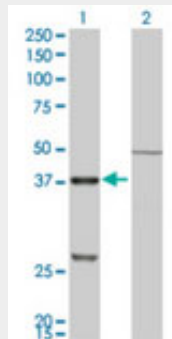
Predominantly expressed in osteoclasts (bones) (PubMed:7805878). Expressed in thyroid epithelial cells (PubMed:11082042).

## CTSK / Cathepsin K Antibody (clone 2F1) - Protocols

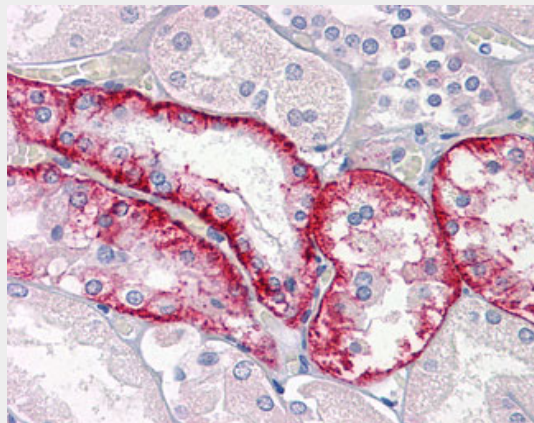
Provided below are standard protocols that you may find useful for product applications.

- [Western Blot](#)
- [Blocking Peptides](#)
- [Dot Blot](#)
- [Immunohistochemistry](#)
- [Immunofluorescence](#)
- [Immunoprecipitation](#)
- [Flow Cytometry](#)
- [Cell Culture](#)

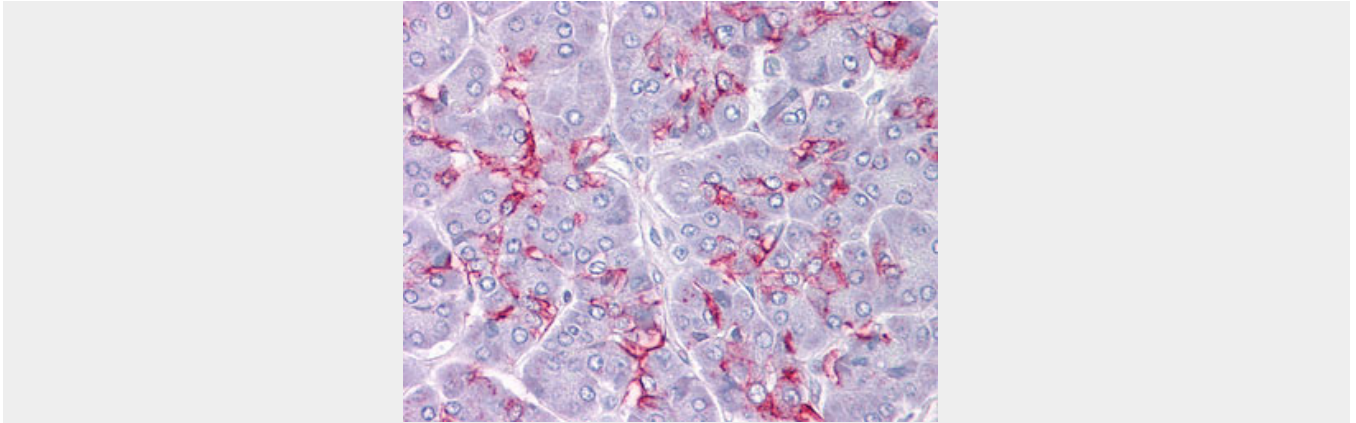
## CTSK / Cathepsin K Antibody (clone 2F1) - Images



Western blot of CTSK expression in transfected 293T cell line by CTSK monoclonal antibody, clone...



Anti-CTSK / Cathepsin K antibody IHC of human kidney.



Anti-CTSK / Cathepsin K antibody IHC of human pancreas.

### **CTSK / Cathepsin K Antibody (clone 2F1) - Background**

Closely involved in osteoclastic bone resorption and may participate partially in the disorder of bone remodeling. Displays potent endoprotease activity against fibrinogen at acid pH. May play an important role in extracellular matrix degradation.

### **CTSK / Cathepsin K Antibody (clone 2F1) - References**

- Shi G.-P., et al. FEBS Lett. 357:129-134(1995).
- Inaoka T., et al. Biochem. Biophys. Res. Commun. 206:89-96(1995).
- Li Y., et al. J. Bone Miner. Res. 10:1197-1202(1995).
- Broemme D., et al. Biol. Chem. Hoppe-Seyler 376:379-384(1995).
- Ebert L., et al. Submitted (JUN-2004) to the EMBL/GenBank/DDBJ databases.