

CRYM Antibody (clone 6B3)
Mouse Monoclonal Antibody
Catalog # ALS13294

Specification

CRYM Antibody (clone 6B3) - Product Information

Application	WB, IHC
Primary Accession	O14894
Reactivity	Human
Host	Mouse
Clonality	Monoclonal
Calculated MW	34kDa KDa

CRYM Antibody (clone 6B3) - Additional Information

Gene ID 1428

Other Names

Ketimine reductase mu-crystallin, 1.5.1.25, NADP-regulated thyroid-hormone-binding protein, CRYM, THBP

Reconstitution & Storage

Store at -20°C. Aliquot to avoid freeze/thaw cycles.

Precautions

CRYM Antibody (clone 6B3) is for research use only and not for use in diagnostic or therapeutic procedures.

CRYM Antibody (clone 6B3) - Protein Information

Name CRYM

Synonyms THBP

Function

Specifically catalyzes the reduction of imine bonds in brain substrates that may include cystathionine ketimine (CysK) and lanthionine ketimine (LK). Binds thyroid hormone which is a strong reversible inhibitor. Presumably involved in the regulation of the free intracellular concentration of triiodothyronine and access to its nuclear receptors.

Cellular Location

Cytoplasm.

Tissue Location

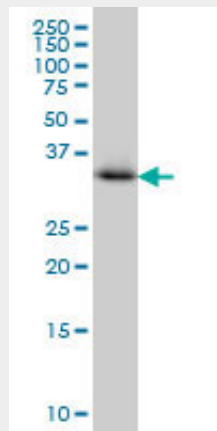
Expressed in neural tissue, muscle and kidney.

CRYM Antibody (clone 6B3) - Protocols

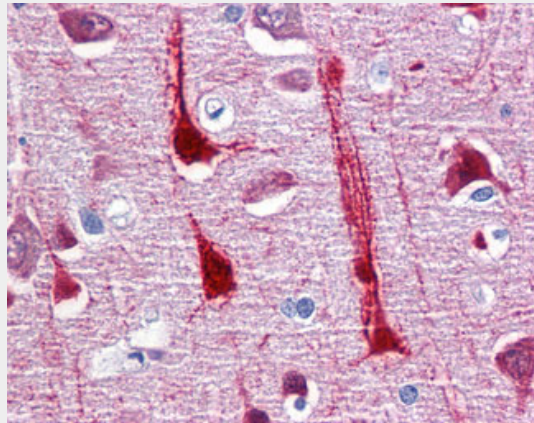
Provided below are standard protocols that you may find useful for product applications.

- [Western Blot](#)
- [Blocking Peptides](#)
- [Dot Blot](#)
- [Immunohistochemistry](#)
- [Immunofluorescence](#)
- [Immunoprecipitation](#)
- [Flow Cytometry](#)
- [Cell Culture](#)

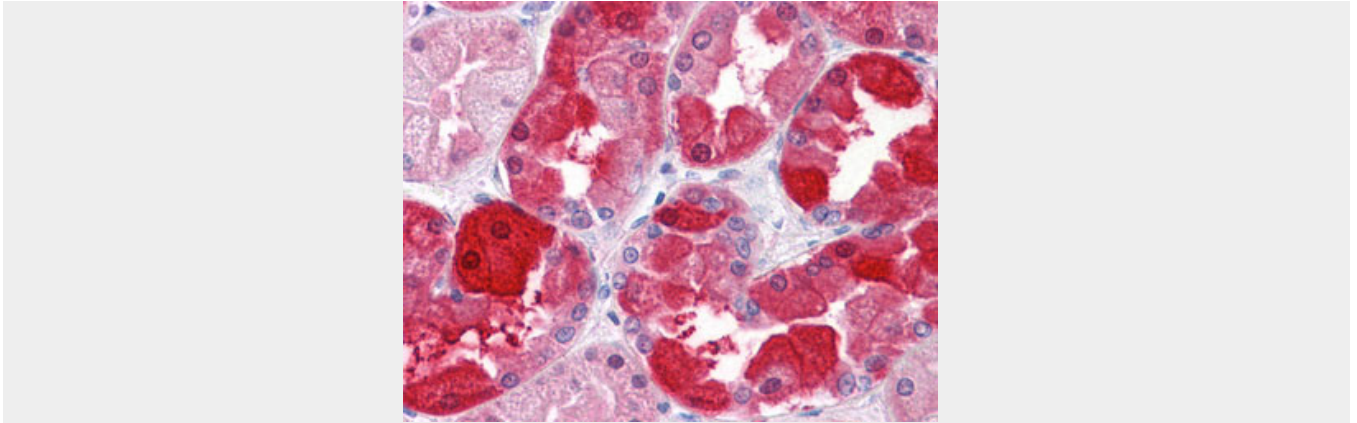
CRYM Antibody (clone 6B3) - Images



CRYM monoclonal antibody clone 6B3 Western blot of CRYM expression in Jurkat.



Anti-CRYM antibody IHC of human brain, cortex.



Anti-CRYM antibody IHC of human kidney.

CRYM Antibody (clone 6B3) - Background

Specifically catalyzes the reduction of imine bonds in brain substrates that may include cystathionine ketimine (CysK) and lanthionine ketimine (LK). Binds thyroid hormone which is a strong reversible inhibitor. Presumably involved in the regulation of the free intracellular concentration of triiodothyronine and access to its nuclear receptors.

CRYM Antibody (clone 6B3) - References

- Segovia L.,et al.Mol. Vis. 3:9-9(1997).
- Vie M.-P.,et al.Mol. Endocrinol. 11:1728-1736(1997).
- Sperbeck S.J.,et al.Submitted (DEC-1997) to the EMBL/GenBank/DDBJ databases.
- Loftus B.J.,et al.Genomics 60:295-308(1999).
- Ota T.,et al.Nat. Genet. 36:40-45(2004).