

**CDX2 Antibody (clone 1C7)**  
**Mouse Monoclonal Antibody**  
**Catalog # ALS13290****Specification**

---

**CDX2 Antibody (clone 1C7) - Product Information**

Application	<b>WB</b>
Primary Accession	<a href="#">O99626</a>
Reactivity	<b>Human</b>
Host	<b>Mouse</b>
Clonality	<b>Monoclonal</b>
Calculated MW	<b>34kDa KDa</b>

**CDX2 Antibody (clone 1C7) - Additional Information****Gene ID** 1045**Other Names**

Homeobox protein CDX-2, CDX-3, Caudal-type homeobox protein 2, CDX2, CDX3

**Reconstitution & Storage**

Store at -20°C. Aliquot to avoid freeze/thaw cycles.

**Precautions**

CDX2 Antibody (clone 1C7) is for research use only and not for use in diagnostic or therapeutic procedures.

**CDX2 Antibody (clone 1C7) - Protein Information****Name** CDX2**Synonyms** CDX3**Function**

Transcription factor which regulates the transcription of multiple genes expressed in the intestinal epithelium (By similarity). Binds to the promoter of the intestinal sucrase-isomaltase SI and activates SI transcription (By similarity). Binds to the DNA sequence 5'-ATAAAACTTAT-3' in the promoter region of VDR and activates VDR transcription (By similarity). Binds to and activates transcription of LPH (By similarity). Activates transcription of CLDN2 and intestinal mucin MUC2 (By similarity). Binds to the 5'-AATTTTTTACAACACCT-3' DNA sequence in the promoter region of CA1 and activates CA1 transcription (By similarity). Important in broad range of functions from early differentiation to maintenance of the intestinal epithelial lining of both the small and large intestine. Binds preferentially to methylated DNA (PubMed:<a href="http://www.uniprot.org/citations/28473536" target="\_blank">28473536</a>).

**Cellular Location**

Nucleus {ECO:0000250|UniProtKB:P43241}.

### Tissue Location

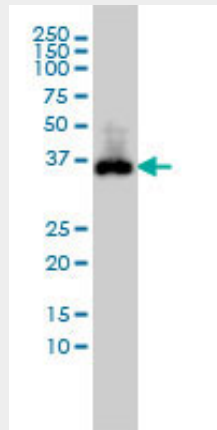
Detected in small intestine, colon and pancreas.

### CDX2 Antibody (clone 1C7) - Protocols

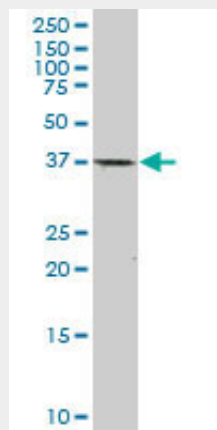
Provided below are standard protocols that you may find useful for product applications.

- [Western Blot](#)
- [Blocking Peptides](#)
- [Dot Blot](#)
- [Immunohistochemistry](#)
- [Immunofluorescence](#)
- [Immunoprecipitation](#)
- [Flow Cytometry](#)
- [Cell Culture](#)

### CDX2 Antibody (clone 1C7) - Images



CDX2 monoclonal antibody, clone 1C7 Western blot of CDX2 expression in COLO 320 HSR.



CDX2 monoclonal antibody, clone 1C7. Western blot of CDX2 expression in human parotid gland.

### CDX2 Antibody (clone 1C7) - Background

Involved in the transcriptional regulation of multiple genes expressed in the intestinal epithelium. Important in broad range of functions from early differentiation to maintenance of the intestinal epithelial lining of both the small and large intestine.

**CDX2 Antibody (clone 1C7) - References**

Drummond F.J.,et al. Ann. Hum. Genet. 61:393-400(1997).

Mallo G.V.,et al. Int. J. Cancer 74:35-44(1997).

Sivagnanasundaram S.,et al. Br. J. Cancer 84:218-225(2001).

Tanizawa Y.,et al. Submitted (JUN-1997) to the EMBL/GenBank/DDBJ databases.

Dunham A.,et al. Nature 428:522-528(2004).