

MAPT / Tau Antibody (Ser422)
Rabbit Polyclonal Antibody
Catalog # ALS13268

Specification

MAPT / Tau Antibody (Ser422) - Product Information

Application	WB, IHC
Primary Accession	P10636
Reactivity	Human, Mouse, Rat, Rabbit, Monkey, Chicken, Goat, Bovine, Dog
Host	Rabbit
Clonality	Polyclonal
Calculated MW	79kDa KDa

MAPT / Tau Antibody (Ser422) - Additional Information

Gene ID 4137

Other Names

Microtubule-associated protein tau, Neurofibrillary tangle protein, Paired helical filament-tau, PHF-tau, MAPT, MAPTL, MTBT1, TAU

Target/Specificity

endogenous levels of total Tau protein

Reconstitution & Storage

Aliquot and store at -20°C. Minimize freezing and thawing.

Precautions

MAPT / Tau Antibody (Ser422) is for research use only and not for use in diagnostic or therapeutic procedures.

MAPT / Tau Antibody (Ser422) - Protein Information

Name MAPT ([HGNC:6893](#))

Synonyms MAPTL, MTBT1, TAU

Function

Promotes microtubule assembly and stability, and might be involved in the establishment and maintenance of neuronal polarity (PubMed: [21985311](http://www.uniprot.org/citations/21985311)). The C-terminus binds axonal microtubules while the N-terminus binds neural plasma membrane components, suggesting that tau functions as a linker protein between both (PubMed: [21985311](http://www.uniprot.org/citations/21985311), PubMed: [32961270](http://www.uniprot.org/citations/32961270)). Axonal polarity is predetermined by TAU/MAPT localization (in the neuronal cell) in the domain of the cell body defined by the centrosome. The short isoforms allow plasticity of the cytoskeleton whereas the longer isoforms may preferentially play a role in its

stabilization.

Cellular Location

Cytoplasm, cytosol. Cell membrane; Peripheral membrane protein; Cytoplasmic side. Cytoplasm, cytoskeleton. Cell projection, axon. Cell projection, dendrite. Secreted Note=Mostly found in the axons of neurons, in the cytosol and in association with plasma membrane components (PubMed:10747907). Can be secreted; the secretion is dependent on protein unfolding and facilitated by the cargo receptor TMED10; it results in protein translocation from the cytoplasm into the ERGIC (endoplasmic reticulum- Golgi intermediate compartment) followed by vesicle entry and secretion (PubMed:32272059).

Tissue Location

Expressed in neurons. Isoform PNS-tau is expressed in the peripheral nervous system while the others are expressed in the central nervous system

Volume

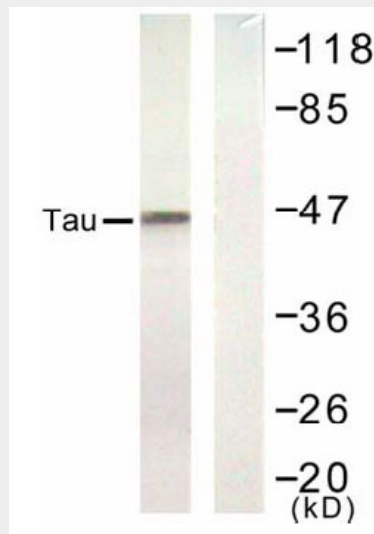
250 µl

MAPT / Tau Antibody (Ser422) - Protocols

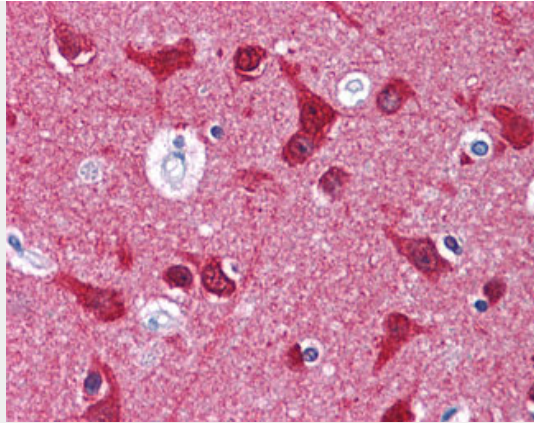
Provided below are standard protocols that you may find useful for product applications.

- [Western Blot](#)
- [Blocking Peptides](#)
- [Dot Blot](#)
- [Immunohistochemistry](#)
- [Immunofluorescence](#)
- [Immunoprecipitation](#)
- [Flow Cytometry](#)
- [Cell Culture](#)

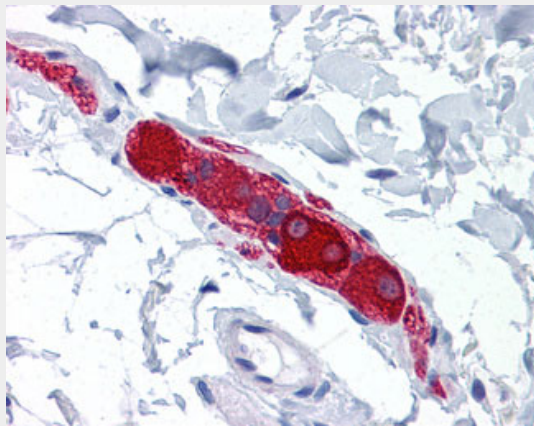
MAPT / Tau Antibody (Ser422) - Images



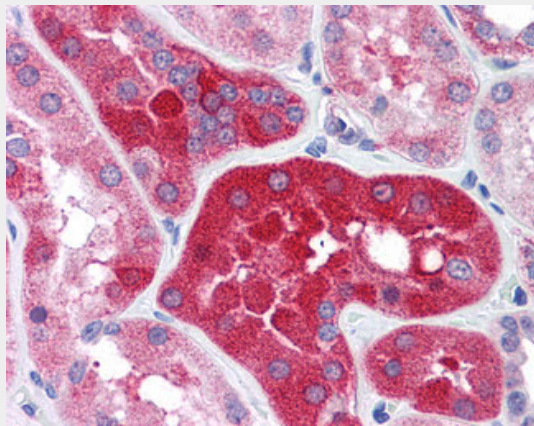
Western blot of extract from rat hippocampus tissue, using Rabbit Anti-Tau (Ab-422) Polyclonal...



Anti-MAPT / Tau antibody IHC of human brain, cortex.



Anti-MAPT / Tau antibody IHC of human small intestine, submucosal plexus.



Anti-MAPT / Tau antibody IHC of human kidney.

MAPT / Tau Antibody (Ser422) - Background

Promotes microtubule assembly and stability, and might be involved in the establishment and maintenance of neuronal polarity. The C-terminus binds axonal microtubules while the N-terminus binds neural plasma membrane components, suggesting that tau functions as a linker protein between both. Axonal polarity is predetermined by TAU/MAPT localization (in the neuronal cell) in the domain of the cell body defined by the centrosome. The short isoforms allow plasticity of the cytoskeleton whereas the longer isoforms may preferentially play a role in its stabilization.

MAPT / Tau Antibody (Ser422) - References

Goedert M.,et al.Proc. Natl. Acad. Sci. U.S.A. 85:4051-4055(1988).
Goedert M.,et al.EMBO J. 8:393-399(1989).
Lee G.,et al.Neuron 2:1615-1624(1989).
Goedert M.,et al.Neuron 3:519-526(1989).
Andreadis A.,et al.Biochemistry 31:10626-10633(1992).