

**HNE / Neutrophil Elastase Antibody**  
**Sheep Polyclonal Antibody**  
**Catalog # ALS13264****Specification**

---

**HNE / Neutrophil Elastase Antibody - Product Information**

Application	IHC
Primary Accession	<a href="#">P08246</a>
Reactivity	Human
Host	Sheep
Clonality	Polyclonal
Calculated MW	29kDa KDa

**HNE / Neutrophil Elastase Antibody - Additional Information****Gene ID** 1991**Other Names**

Neutrophil elastase, 3.4.21.37, Bone marrow serine protease, Elastase-2, Human leukocyte elastase, HLE, Medullasin, PMN elastase, ELANE, ELA2

**Target/Specificity**

Specific for elastase.

**Reconstitution & Storage**

Short term 4°C, long term aliquot and store at -20°C, avoid freeze thaw cycles.

**Precautions**

HNE / Neutrophil Elastase Antibody is for research use only and not for use in diagnostic or therapeutic procedures.

**HNE / Neutrophil Elastase Antibody - Protein Information****Name** ELANE**Synonyms** ELA2**Function**

Serine protease that modifies the functions of natural killer cells, monocytes and granulocytes. Inhibits C5a-dependent neutrophil enzyme release and chemotaxis (PubMed: [15140022](http://www.uniprot.org/citations/15140022)). Promotes cleavage of GSDMB, thereby inhibiting pyroptosis (PubMed: [36899106](http://www.uniprot.org/citations/36899106)). Capable of killing E.coli but not S.aureus in vitro; digests outer membrane protein A (ompA) in E.coli and K.pneumoniae (PubMed: [10947984](http://www.uniprot.org/citations/10947984)).

**Cellular Location**

Cytoplasmic vesicle, phagosome. Note=Localized in phagolysosomes following ingestion of E.coli by neutrophils

#### **Tissue Location**

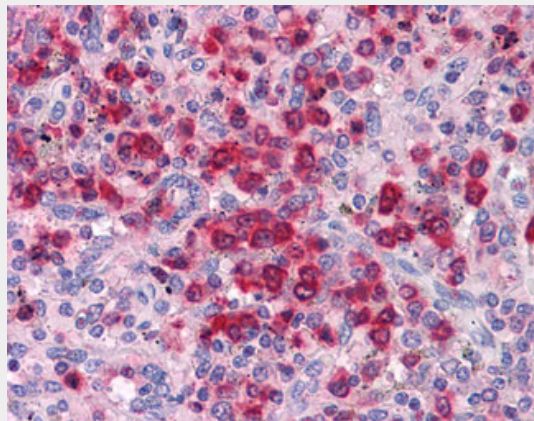
Bone marrow cells. Neutrophil (PubMed:10947984).

#### **HNE / Neutrophil Elastase Antibody - Protocols**

Provided below are standard protocols that you may find useful for product applications.

- [Western Blot](#)
- [Blocking Peptides](#)
- [Dot Blot](#)
- [Immunohistochemistry](#)
- [Immunofluorescence](#)
- [Immunoprecipitation](#)
- [Flow Cytometry](#)
- [Cell Culture](#)

#### **HNE / Neutrophil Elastase Antibody - Images**



Anti-ELANE / Neutrophil Elastase antibody IHC of human spleen.

#### **HNE / Neutrophil Elastase Antibody - Background**

Modifies the functions of natural killer cells, monocytes and granulocytes. Inhibits C5a-dependent neutrophil enzyme release and chemotaxis.

#### **HNE / Neutrophil Elastase Antibody - References**

- Nakamura H.,et al.Nucleic Acids Res. 15:9601-9601(1987).  
Takahashi H.,et al.J. Biol. Chem. 263:14739-14747(1988).  
Farley D.,et al.Biol. Chem. Hoppe-Seyler 370:737-744(1989).  
Okano K.,et al.Biochem. Biophys. Res. Commun. 167:1326-1332(1990).  
Okano K.,et al.J. Biochem. 102:13-16(1987).