

**VRL1 / TRPV2 Antibody**  
**Rabbit Polyclonal Antibody**  
**Catalog # ALS13244****Specification**

---

**VRL1 / TRPV2 Antibody - Product Information**

Application	<b>WB, IHC</b>
Primary Accession	<a href="#">O9Y5S1</a>
Reactivity	<b>Human, Mouse</b>
Host	<b>Rabbit</b>
Clonality	<b>Polyclonal</b>
Calculated MW	<b>86kDa KDa</b>

**VRL1 / TRPV2 Antibody - Additional Information****Gene ID** 51393**Other Names**

Transient receptor potential cation channel subfamily V member 2, TrpV2, Osm-9-like TRP channel 2, OTRPC2, Vanilloid receptor-like protein 1, VRL-1, TRPV2, VRL

**Target/Specificity**

Human and mouse VRL1.

**Reconstitution & Storage**

Aliquot and store at -20°C. Minimize freezing and thawing.

**Precautions**

VRL1 / TRPV2 Antibody is for research use only and not for use in diagnostic or therapeutic procedures.

**VRL1 / TRPV2 Antibody - Protein Information****Name** TRPV2**Synonyms** VRL**Function**

Calcium-permeable, non-selective cation channel with an outward rectification. Seems to be regulated, at least in part, by IGF- I, PDGF and neuropeptide head activator. May transduce physical stimuli in mast cells. Activated by temperatures higher than 52 degrees Celsius; is not activated by vanilloids and acidic pH.

**Cellular Location**

Cell membrane {ECO:0000250|UniProtKB:Q9WTR1}; Multi-pass membrane protein. Cytoplasm {ECO:0000250|UniProtKB:Q9WTR1}. Melanosome. Note=Translocates from the cytoplasm to the plasma membrane upon ligand stimulation (By similarity). Identified by mass spectrometry in melanosome fractions from stage I to stage IV {ECO:0000250|UniProtKB:Q9WTR1}

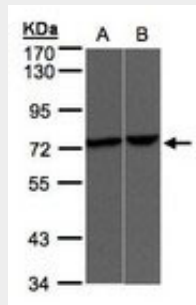
**Volume**  
100  $\mu$ l

### VRL1 / TRPV2 Antibody - Protocols

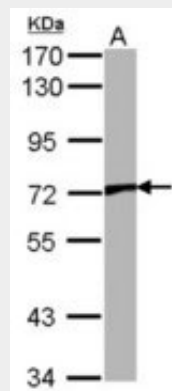
Provided below are standard protocols that you may find useful for product applications.

- [Western Blot](#)
- [Blocking Peptides](#)
- [Dot Blot](#)
- [Immunohistochemistry](#)
- [Immunofluorescence](#)
- [Immunoprecipitation](#)
- [Flow Cytometry](#)
- [Cell Culture](#)

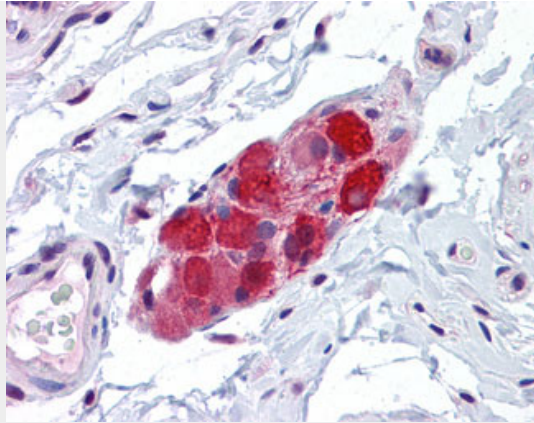
### VRL1 / TRPV2 Antibody - Images



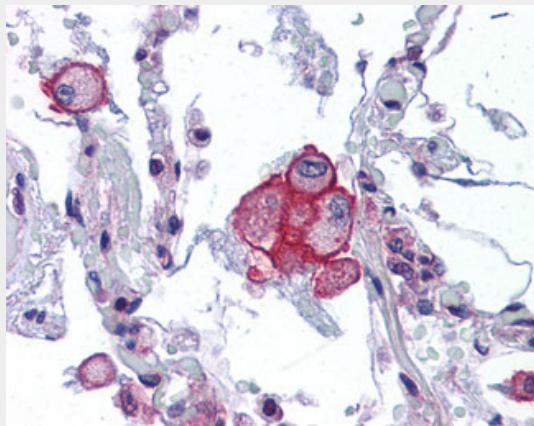
Sample(30 g of whole cell lysate). A: A431. B: Raji. 7.5% SDS PAGE. TRPV2 antibody diluted at 1:500.



Sample (30 ug of whole cell lysate).



Anti-TRPV2 antibody IHC of human small intestine, submucosal plexus.



Anti-TRPV2 antibody IHC of human lung.

#### **VRL1 / TRPV2 Antibody - Background**

Calcium-permeable, non-selective cation channel with an outward rectification. Seems to be regulated, at least in part, by IGF-I, PDGF and neuropeptide head activator. May transduce physical stimuli in mast cells. Activated by temperatures higher than 52 degrees Celsius; is not activated by vanilloids and acidic pH.

#### **VRL1 / TRPV2 Antibody - References**

- Caterina M.J.,et al.Nature 398:436-441(1999).
- Garcia R.L.,et al.Submitted (NOV-1998) to the EMBL/GenBank/DDBJ databases.
- Kelsell R.E.,et al.Submitted (MAY-2002) to the EMBL/GenBank/DDBJ databases.
- Ota T.,et al.Nat. Genet. 36:40-45(2004).
- Zody M.C.,et al.Nature 440:1045-1049(2006).