

**ACTA1 / ASMA Antibody**  
**Rabbit Polyclonal Antibody**  
**Catalog # ALS13237****Specification**

---

**ACTA1 / ASMA Antibody - Product Information**

Application	<b>WB, IHC</b>
Primary Accession	<a href="#">P68133</a>
Reactivity	<b>Human, Zebrafish, Fish</b>
Host	<b>Rabbit</b>
Clonality	<b>Polyclonal</b>
Calculated MW	<b>42kDa KDa</b>

**ACTA1 / ASMA Antibody - Additional Information****Gene ID 58****Other Names**

Actin, alpha skeletal muscle, Alpha-actin-1, ACTA1, ACTA

**Target/Specificity**

Human and zebrafish alpha Actin (skeletal muscle). Predicted cross-reactivity based on amino acid sequence homology: bovine (100%).

**Reconstitution & Storage**

Short term 4°C, long term aliquot and store at -20°C, avoid freeze thaw cycles.

**Precautions**

ACTA1 / ASMA Antibody is for research use only and not for use in diagnostic or therapeutic procedures.

**ACTA1 / ASMA Antibody - Protein Information****Name** ACTA1**Synonyms** ACTA**Function**

Actins are highly conserved proteins that are involved in various types of cell motility and are ubiquitously expressed in all eukaryotic cells.

**Cellular Location**

Cytoplasm, cytoskeleton.

**Volume**

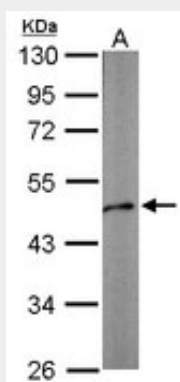
50 µl

## ACTA1 / ASMA Antibody - Protocols

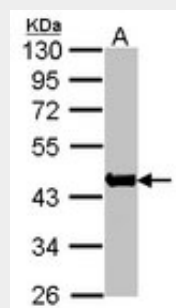
Provided below are standard protocols that you may find useful for product applications.

- [Western Blot](#)
- [Blocking Peptides](#)
- [Dot Blot](#)
- [Immunohistochemistry](#)
- [Immunofluorescence](#)
- [Immunoprecipitation](#)
- [Flow Cytometry](#)
- [Cell Culture](#)

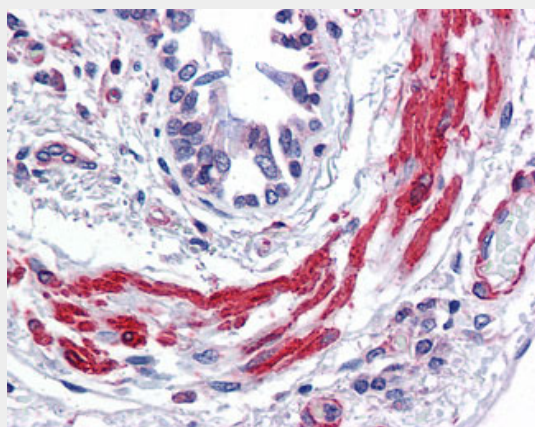
## ACTA1 / ASMA Antibody - Images



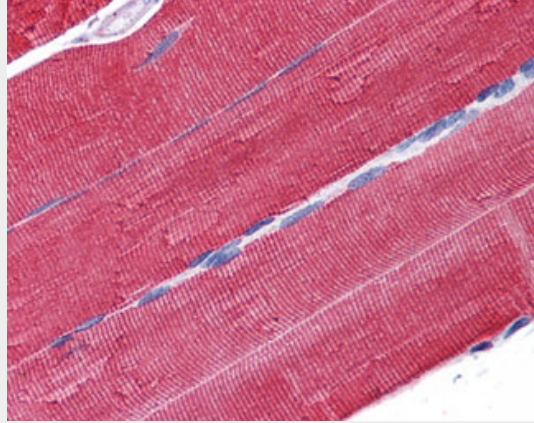
Sample (10 ug of whole cell lysate).



Sample(30 g of whole cell lysate). A: Raji. 10% SDS PAGE. ACTA1 antibody diluted at 1:1000.



Anti-ACTA1 / ASMA antibody IHC of human lung, bronchial smooth muscle.



Anti-ACTA1 / ASMA antibody IHC of human skeletal muscle.

### **ACTA1 / ASMA Antibody - Background**

Actins are highly conserved proteins that are involved in various types of cell motility and are ubiquitously expressed in all eukaryotic cells.

### **ACTA1 / ASMA Antibody - References**

- Hanauer A.,et al.Nucleic Acids Res. 11:3503-3516(1983).
- Taylor A.,et al.Genomics 3:323-336(1988).
- Nowak K.J.,et al.Nat. Genet. 23:208-212(1999).
- Ebert L.,et al.Submitted (JUN-2004) to the EMBL/GenBank/DDBJ databases.
- Gregory S.G.,et al.Nature 441:315-321(2006).