

FASLG / Fas Ligand Antibody
Rabbit Polyclonal Antibody
Catalog # ALS13233**Specification**

FASLG / Fas Ligand Antibody - Product Information

Application	WB, IHC
Primary Accession	P48023
Reactivity	Human
Host	Rabbit
Clonality	Polyclonal
Calculated MW	31kDa KDa

FASLG / Fas Ligand Antibody - Additional Information**Gene ID** 356**Other Names**

Tumor necrosis factor ligand superfamily member 6, Apoptosis antigen ligand, APTL, CD95 ligand, CD95-L, Fas antigen ligand, Fas ligand, FasL, CD178, Tumor necrosis factor ligand superfamily member 6, membrane form, Tumor necrosis factor ligand superfamily member 6, soluble form, Receptor-binding FasL ectodomain, Soluble Fas ligand, sFasL, ADAM10-processed FasL form, APL, FasL intracellular domain, FasL ICD, SPPL2A-processed FasL form, SPA, FASLG, APT1LG1, CD95L, FASL, TNFSF6

Target/Specificity

Human Fas Ligand.

Reconstitution & Storage

Aliquot and store at -20°C. Minimize freezing and thawing.

Precautions

FASLG / Fas Ligand Antibody is for research use only and not for use in diagnostic or therapeutic procedures.

FASLG / Fas Ligand Antibody - Protein Information**Name** FASLG**Synonyms** APT1LG1, CD95L, FASL, TNFSF6**Function**

Cytokine that binds to TNFRSF6/FAS, a receptor that transduces the apoptotic signal into cells (PubMed: [26334989](http://www.uniprot.org/citations/26334989)), PubMed: [9228058](http://www.uniprot.org/citations/9228058)). Involved in cytotoxic T-cell-mediated apoptosis, natural killer cell-mediated apoptosis and in T-cell development (PubMed: [7528780](http://www.uniprot.org/citations/7528780), PubMed: [9228058](http://www.uniprot.org/citations/9228058))

target="_blank">9228058, PubMed:9427603). Initiates fratricidal/suicidal activation-induced cell death (AICD) in antigen- activated T-cells contributing to the termination of immune responses (By similarity). TNFRSF6/FAS-mediated apoptosis has also a role in the induction of peripheral tolerance (By similarity). Binds to TNFRSF6B/DcR3, a decoy receptor that blocks apoptosis (PubMed:27806260).

Cellular Location

Cell membrane; Single-pass type II membrane protein. Cytoplasmic vesicle lumen Lysosome lumen. Note=Is internalized into multivesicular bodies of secretory lysosomes after phosphorylation by FGR and monoubiquitination (PubMed:17164290). Colocalizes with the SPPL2A protease at the cell membrane (PubMed:17557115) [FasL intracellular domain]: Nucleus. Note=The FasL ICD cytoplasmic form is translocated into the nucleus.

Volume

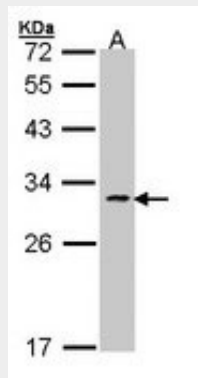
50 μ l

FASLG / Fas Ligand Antibody - Protocols

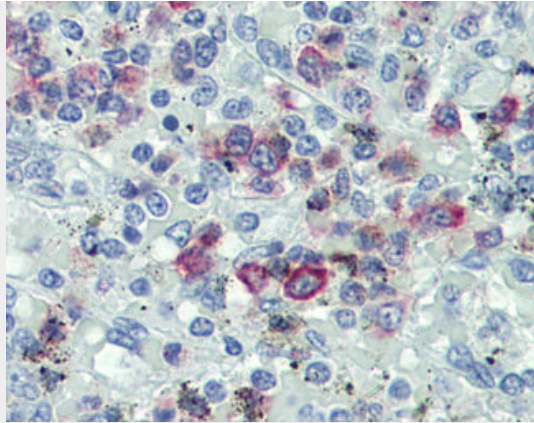
Provided below are standard protocols that you may find useful for product applications.

- [Western Blot](#)
- [Blocking Peptides](#)
- [Dot Blot](#)
- [Immunohistochemistry](#)
- [Immunofluorescence](#)
- [Immunoprecipitation](#)
- [Flow Cytometry](#)
- [Cell Culture](#)

FASLG / Fas Ligand Antibody - Images



Sample (30 ug of whole cell lysate). A: 293T. 12% SDS PAGE. FASLG antibody diluted at 1:1000.



Anti-FASLG / FASL antibody IHC of human spleen.

FASLG / Fas Ligand Antibody - Background

Cytokine that binds to TNFRSF6/FAS, a receptor that transduces the apoptotic signal into cells. May be involved in cytotoxic T-cell mediated apoptosis and in T-cell development. TNFRSF6/FAS-mediated apoptosis may have a role in the induction of peripheral tolerance, in the antigen-stimulated suicide of mature T-cells, or both. Binding to the decoy receptor TNFRSF6B/DcR3 modulates its effects.

FASLG / Fas Ligand Antibody - References

- Alderson M., et al. *Exp. Med.* 181:71-77(1995).
- Takahashi T., et al. *Int. Immunol.* 6:1567-1574(1994).
- Schaetzlein C.E., et al. Submitted (JUN-1995) to the EMBL/GenBank/DDBJ databases.
- Mita E., et al. *Biochem. Biophys. Res. Commun.* 204:468-474(1994).
- Zeytun A., et al. Submitted (JUL-2000) to the EMBL/GenBank/DDBJ databases.