

PDGF-BB Antibody (C-Terminus)
Goat Polyclonal Antibody
Catalog # ALS13226

Specification

PDGF-BB Antibody (C-Terminus) - Product Information

Application	IHC
Primary Accession	P01127
Reactivity	Human, Sheep, Bovine
Host	Goat
Clonality	Polyclonal
Calculated MW	27kDa KDa

PDGF-BB Antibody (C-Terminus) - Additional Information

Gene ID 5155

Other Names

Platelet-derived growth factor subunit B, PDGF subunit B, PDGF-2, Platelet-derived growth factor B chain, Platelet-derived growth factor beta polypeptide, Proto-oncogene c-Sis, Becaplermin, PDGFB, PDGF2, SIS

Target/Specificity

Human PDGFB.

Reconstitution & Storage

Store at -20°C. Minimize freezing and thawing.

Precautions

PDGF-BB Antibody (C-Terminus) is for research use only and not for use in diagnostic or therapeutic procedures.

PDGF-BB Antibody (C-Terminus) - Protein Information

Name PDGFB

Synonyms PDGF2, SIS

Function

Growth factor that plays an essential role in the regulation of embryonic development, cell proliferation, cell migration, survival and chemotaxis. Potent mitogen for cells of mesenchymal origin (PubMed: <http://www.uniprot.org/citations/26599395> target="_blank">26599395). Required for normal proliferation and recruitment of pericytes and vascular smooth muscle cells in the central nervous system, skin, lung, heart and placenta. Required for normal blood vessel development, and for normal development of kidney glomeruli. Plays an important role in wound healing. Signaling is modulated by the formation of heterodimers with PDGFA (By similarity).

Cellular Location

Secreted. Note=Released by platelets upon wounding

Tissue Location

Expressed at high levels in the heart, brain (sustantia nigra), placenta and fetal kidney. Expressed at moderate levels in the brain (hippocampus), skeletal muscle, kidney and lung

Volume

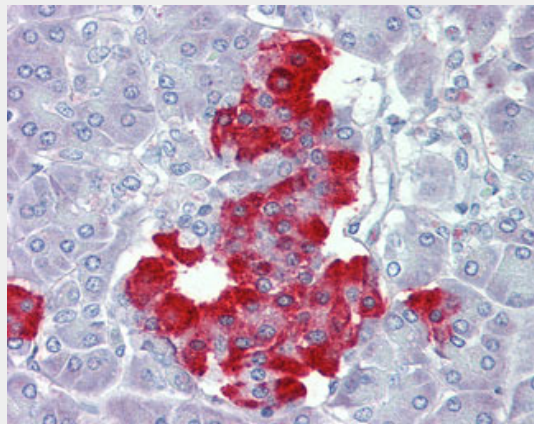
50 μ l

PDGF-BB Antibody (C-Terminus) - Protocols

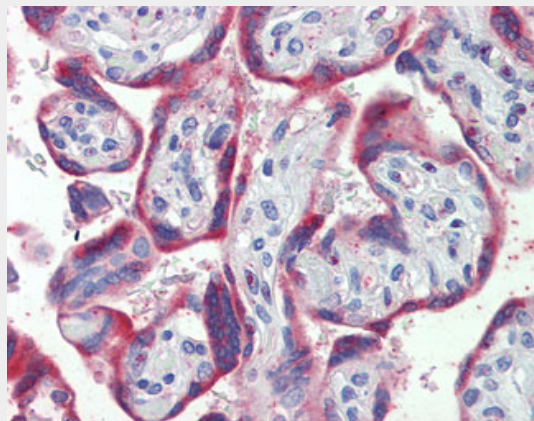
Provided below are standard protocols that you may find useful for product applications.

- [Western Blot](#)
- [Blocking Peptides](#)
- [Dot Blot](#)
- [Immunohistochemistry](#)
- [Immunofluorescence](#)
- [Immunoprecipitation](#)
- [Flow Cytometry](#)
- [Cell Culture](#)

PDGF-BB Antibody (C-Terminus) - Images



Anti-PDGFB antibody IHC of human pancreas.



Anti-PDGFB antibody IHC of human placenta.

PDGF-BB Antibody (C-Terminus) - Background

Growth factor that plays an essential role in the regulation of embryonic development, cell proliferation, cell migration, survival and chemotaxis. Potent mitogen for cells of mesenchymal origin. Required for normal proliferation and recruitment of pericytes and vascular smooth muscle cells in the central nervous system, skin, lung, heart and placenta. Required for normal blood vessel development, and for normal development of kidney glomeruli. Plays an important role in wound healing. Signaling is modulated by the formation of heterodimers with PDGFA (By similarity).

PDGF-BB Antibody (C-Terminus) - References

- Josephs S.F., et al. *Science* 225:636-639(1984).
Collins T., et al. *Nature* 316:748-750(1985).
Ratner L., et al. *Nucleic Acids Res.* 13:5007-5018(1985).
Rao C.D., et al. *Cold Spring Harb. Symp. Quant. Biol.* 51:959-966(1986).
Rao C.D., et al. *Proc. Natl. Acad. Sci. U.S.A.* 83:2392-2396(1986).