

SLC2A2 / GLUT2 Antibody (Internal)
Goat Polyclonal Antibody
Catalog # ALS13222**Specification**

SLC2A2 / GLUT2 Antibody (Internal) - Product Information

Application	IHC
Primary Accession	P11168
Reactivity	Human
Host	Goat
Clonality	Polyclonal
Calculated MW	57kDa KDa

SLC2A2 / GLUT2 Antibody (Internal) - Additional Information**Gene ID** 6514**Other Names**

Solute carrier family 2, facilitated glucose transporter member 2, Glucose transporter type 2, liver, GLUT-2, SLC2A2, GLUT2

Target/Specificity

Human SLC2A2 / GLUT2.

Reconstitution & Storage

Store at -20°C. Minimize freezing and thawing.

Precautions

SLC2A2 / GLUT2 Antibody (Internal) is for research use only and not for use in diagnostic or therapeutic procedures.

SLC2A2 / GLUT2 Antibody (Internal) - Protein Information**Name** SLC2A2 ([HGNC:11006](#))**Function**

Facilitative hexose transporter that mediates the transport of glucose, fructose and galactose (PubMed: [16186102](http://www.uniprot.org/citations/16186102), PubMed: [23396969](http://www.uniprot.org/citations/23396969), PubMed: [28083649](http://www.uniprot.org/citations/28083649), PubMed: [8027028](http://www.uniprot.org/citations/8027028), PubMed: [8457197](http://www.uniprot.org/citations/8457197)). Likely mediates the bidirectional transfer of glucose across the plasma membrane of hepatocytes and is responsible for uptake of glucose by the beta cells; may comprise part of the glucose-sensing mechanism of the beta cell (PubMed: [8027028](http://www.uniprot.org/citations/8027028)). May also participate with the Na(+)/glucose cotransporter in the transcellular transport of glucose in the small intestine and kidney (PubMed: [3399500](http://www.uniprot.org/citations/3399500))

target="_blank">3399500). Also able to mediate the transport of dehydroascorbate (PubMed:23396969).

Cellular Location

Cell membrane; Multi-pass membrane protein

Tissue Location

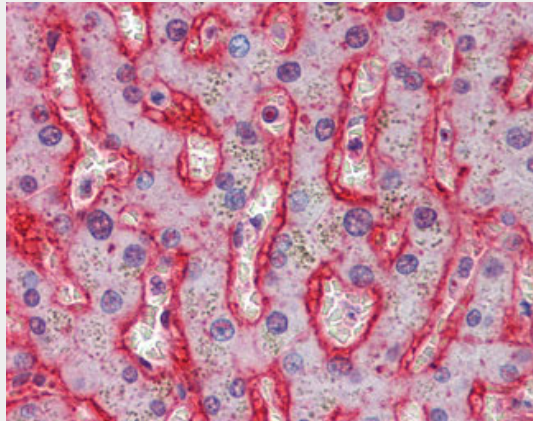
Liver, insulin-producing beta cell, small intestine and kidney.

SLC2A2 / GLUT2 Antibody (Internal) - Protocols

Provided below are standard protocols that you may find useful for product applications.

- [Western Blot](#)
- [Blocking Peptides](#)
- [Dot Blot](#)
- [Immunohistochemistry](#)
- [Immunofluorescence](#)
- [Immunoprecipitation](#)
- [Flow Cytometry](#)
- [Cell Culture](#)

SLC2A2 / GLUT2 Antibody (Internal) - Images



Anti-GLUT2 antibody IHC of human liver.

SLC2A2 / GLUT2 Antibody (Internal) - Background

Facilitative glucose transporter. This isoform likely mediates the bidirectional transfer of glucose across the plasma membrane of hepatocytes and is responsible for uptake of glucose by the beta cells; may comprise part of the glucose-sensing mechanism of the beta cell. May also participate with the Na(+)/glucose cotransporter in the transcellular transport of glucose in the small intestine and kidney.

SLC2A2 / GLUT2 Antibody (Internal) - References

- Fukumoto H., et al. Proc. Natl. Acad. Sci. U.S.A. 85:5434-5438(1988).
Ota T., et al. Nat. Genet. 36:40-45(2004).
Muzny D.M., et al. Nature 440:1194-1198(2006).
Mural R.J., et al. Submitted (SEP-2005) to the EMBL/GenBank/DDBJ databases.
Matsubara A., et al. J. Clin. Endocrinol. Metab. 80:3131-3135(1995).

