

**CLTC / Clathrin Heavy Chain Antibody (Internal)**  
**Goat Polyclonal Antibody**  
**Catalog # ALS13219****Specification**

---

**CLTC / Clathrin Heavy Chain Antibody (Internal) - Product Information**

Application	IHC
Primary Accession	<a href="#">Q00610</a>
Reactivity	Human, Mouse, Rat, Rabbit, Zebrafish, Monkey, Pig, Chicken, Horse, Xenopus, Bovine, Dog
Host	Goat
Clonality	Polyclonal
Calculated MW	192kDa KDa

**CLTC / Clathrin Heavy Chain Antibody (Internal) - Additional Information****Gene ID** 1213**Other Names**

Clathrin heavy chain 1, Clathrin heavy chain on chromosome 17, CLH-17, CLTC, CLH17, CLTCL2, KIAA0034

**Target/Specificity**

Human CLTC.

**Reconstitution & Storage**

Store at -20°C. Minimize freezing and thawing.

**Precautions**

CLTC / Clathrin Heavy Chain Antibody (Internal) is for research use only and not for use in diagnostic or therapeutic procedures.

**CLTC / Clathrin Heavy Chain Antibody (Internal) - Protein Information****Name** CLH1**Function**

Clathrin is the major protein of the polyhedral coat of coated pits and vesicles. Two different adapter protein complexes link the clathrin lattice either to the plasma membrane or to the trans-Golgi network. Acts as a component of the TACC3/ch-TOG/clathrin complex proposed to contribute to stabilization of kinetochore fibers of the mitotic spindle by acting as inter-microtubule bridge (PubMed: [15858577](http://www.uniprot.org/citations/15858577)), (PubMed: [16968737](http://www.uniprot.org/citations/16968737)), (PubMed: [21297582](http://www.uniprot.org/citations/21297582)). The TACC3/ch-TOG/clathrin complex is required for the maintenance of kinetochore fiber tension (PubMed: [23532825](http://www.uniprot.org/citations/23532825)). Plays a role in early autophagosome formation (PubMed: ).

href="http://www.uniprot.org/citations/20639872" target="\_blank">20639872</a>). Interaction with DNAJC6 mediates the recruitment of HSPA8 to the clathrin lattice and creates local destabilization of the lattice promoting uncoating (By similarity).

#### Cellular Location

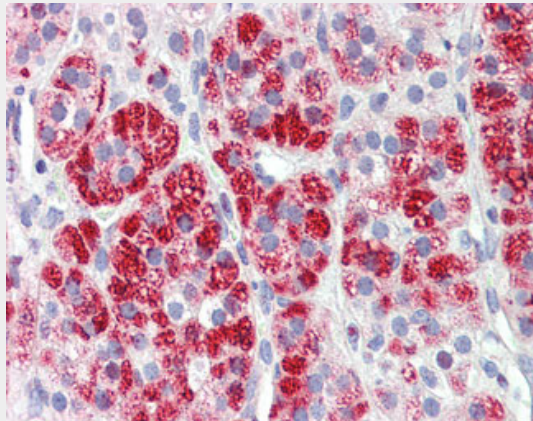
Cytoplasmic vesicle membrane; Peripheral membrane protein; Cytoplasmic side. Membrane, coated pit; Peripheral membrane protein; Cytoplasmic side. Melanosome. Cytoplasm, cytoskeleton, spindle. Note=Cytoplasmic face of coated pits and vesicles. Identified by mass spectrometry in melanosome fractions from stage I to stage IV. In complex with TACC3 and CKAP5 (forming the TACC3/ch-TOG/clathrin complex) localized to inter-microtubule bridges in mitotic spindles.

#### CLTC / Clathrin Heavy Chain Antibody (Internal) - Protocols

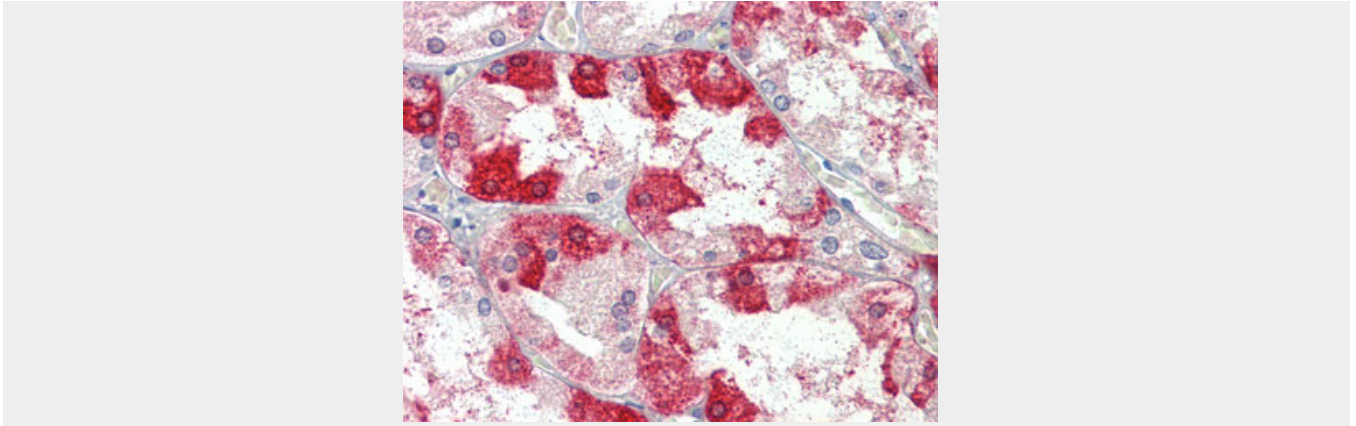
Provided below are standard protocols that you may find useful for product applications.

- [Western Blot](#)
- [Blocking Peptides](#)
- [Dot Blot](#)
- [Immunohistochemistry](#)
- [Immunofluorescence](#)
- [Immunoprecipitation](#)
- [Flow Cytometry](#)
- [Cell Culture](#)

#### CLTC / Clathrin Heavy Chain Antibody (Internal) - Images



Anti-CLTC antibody IHC of human adrenal.



Anti-CLTC antibody IHC of human kidney.

### **CLTC / Clathrin Heavy Chain Antibody (Internal) - Background**

Clathrin is the major protein of the polyhedral coat of coated pits and vesicles. Two different adapter protein complexes link the clathrin lattice either to the plasma membrane or to the trans-Golgi network.

### **CLTC / Clathrin Heavy Chain Antibody (Internal) - References**

- Nomura N.,et al.DNA Res. 1:27-35(1994).
- Bechtel S.,et al.BMC Genomics 8:399-399(2007).
- Mural R.J.,et al.Submitted (SEP-2005) to the EMBL/GenBank/DDBJ databases.
- Dodge G.R.,et al.Genomics 11:174-178(1991).
- Gevaert K.,et al.Nat. Biotechnol. 21:566-569(2003).