

5-Alpha Reductase / SRD5A1 Antibody (Internal)
Goat Polyclonal Antibody
Catalog # ALS13217

Specification

5-Alpha Reductase / SRD5A1 Antibody (Internal) - Product Information

Application	IHC
Primary Accession	P18405
Reactivity	Human, Mouse, Monkey
Host	Goat
Clonality	Polyclonal
Calculated MW	29kDa KDa

5-Alpha Reductase / SRD5A1 Antibody (Internal) - Additional Information

Gene ID 6715

Other Names

3-oxo-5-alpha-steroid 4-dehydrogenase 1, 1.3.1.22, SR type 1, Steroid 5-alpha-reductase 1, S5AR 1, SRD5A1

Target/Specificity

Human SRD5A1.

Reconstitution & Storage

Store at -20°C. Minimize freezing and thawing.

Precautions

5-Alpha Reductase / SRD5A1 Antibody (Internal) is for research use only and not for use in diagnostic or therapeutic procedures.

5-Alpha Reductase / SRD5A1 Antibody (Internal) - Protein Information

Name SRD5A1 ([HGNC:11284](#))

Function

Converts testosterone into 5-alpha-dihydrotestosterone and progesterone or corticosterone into their corresponding 5-alpha-3-oxosteroids. It plays a central role in sexual differentiation and androgen physiology.

Cellular Location

Microsome membrane; Multi-pass membrane protein. Endoplasmic reticulum membrane; Multi-pass membrane protein

Tissue Location

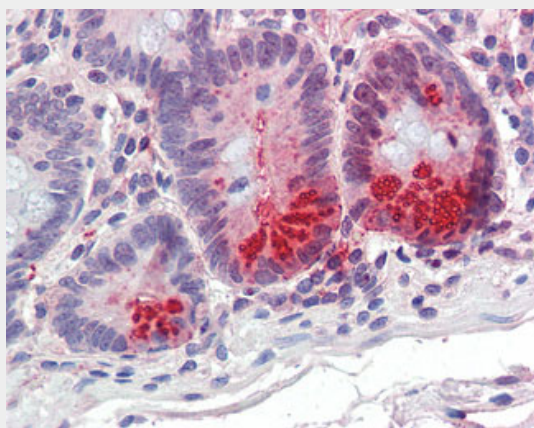
Liver and prostate (at a low level).

5-Alpha Reductase / SRD5A1 Antibody (Internal) - Protocols

Provided below are standard protocols that you may find useful for product applications.

- [Western Blot](#)
- [Blocking Peptides](#)
- [Dot Blot](#)
- [Immunohistochemistry](#)
- [Immunofluorescence](#)
- [Immunoprecipitation](#)
- [Flow Cytometry](#)
- [Cell Culture](#)

5-Alpha Reductase / SRD5A1 Antibody (Internal) - Images



Anti-SRD5A1 antibody IHC of human small intestine.

5-Alpha Reductase / SRD5A1 Antibody (Internal) - Background

Converts testosterone into 5-alpha-dihydrotestosterone and progesterone or corticosterone into their corresponding 5- alpha-3-oxosteroids. It plays a central role in sexual differentiation and androgen physiology.

5-Alpha Reductase / SRD5A1 Antibody (Internal) - References

- Andersson S.,et al.Proc. Natl. Acad. Sci. U.S.A. 87:3640-3644(1990).
Jenkins E.P.,et al.Genomics 11:1102-1112(1991).
Yu W.,et al.Submitted (MAR-1998) to the EMBL/GenBank/DDBJ databases.
Hu R.-M.,et al.Proc. Natl. Acad. Sci. U.S.A. 97:9543-9548(2000).
Kalinine N.,et al.Submitted (MAY-2003) to the EMBL/GenBank/DDBJ databases.