

SYP / Synaptophysin Antibody (clone 7H12)
Mouse Monoclonal Antibody
Catalog # ALS13204

Specification

SYP / Synaptophysin Antibody (clone 7H12) - Product Information

Application	IHC
Primary Accession	P08247
Reactivity	Human, Rat
Host	Mouse
Clonality	Monoclonal
Calculated MW	34kDa KDa

SYP / Synaptophysin Antibody (clone 7H12) - Additional Information

Gene ID 6855

Other Names

Synaptophysin, Major synaptic vesicle protein p38, SYP

Target/Specificity

Human SYP

Reconstitution & Storage

Long term: -20°C; Short term: +4°C. Avoid repeat freeze-thaw cycles.

Precautions

SYP / Synaptophysin Antibody (clone 7H12) is for research use only and not for use in diagnostic or therapeutic procedures.

SYP / Synaptophysin Antibody (clone 7H12) - Protein Information

Name SYP

Function

Possibly involved in structural functions as organizing other membrane components or in targeting the vesicles to the plasma membrane. Involved in the regulation of short-term and long-term synaptic plasticity (By similarity).

Cellular Location

Cytoplasmic vesicle, secretory vesicle, synaptic vesicle membrane; Multi-pass membrane protein. Synapse, synaptosome

Tissue Location

Expressed in the brain, with expression in the hippocampus, the neuropil in the dentate gyrus, where expression is higher in the outer half of the molecular layer than in the inner half, and in the neuropil of CA4 and CA3 (PubMed:8838578). Expressed in the putamen (at protein level) (PubMed:17296554)

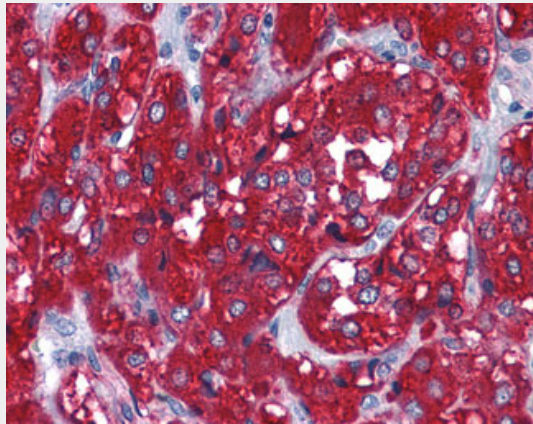
Volume
50 μ l

SYP / Synaptophysin Antibody (clone 7H12) - Protocols

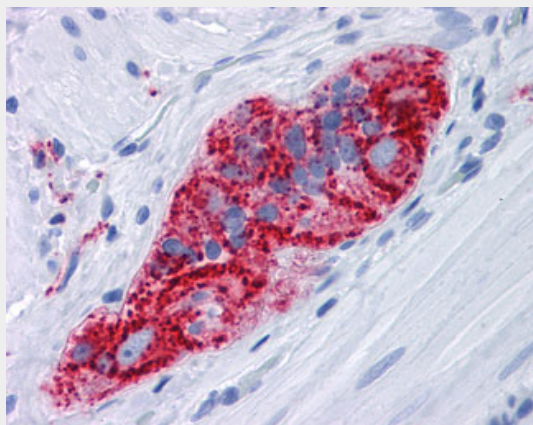
Provided below are standard protocols that you may find useful for product applications.

- [Western Blot](#)
- [Blocking Peptides](#)
- [Dot Blot](#)
- [Immunohistochemistry](#)
- [Immunofluorescence](#)
- [Immunoprecipitation](#)
- [Flow Cytometry](#)
- [Cell Culture](#)

SYP / Synaptophysin Antibody (clone 7H12) - Images



Anti-SYP / Synaptophysin antibody IHC of human adrenal.



Anti-SYP / Synaptophysin antibody IHC of human small intestine, myenteric plexus.

SYP / Synaptophysin Antibody (clone 7H12) - Background

Possibly involved in structural functions as organizing other membrane components or in targeting the vesicles to the plasma membrane. Involved in the regulation of short-term and long-term synaptic plasticity (By similarity).

SYP / Synaptophysin Antibody (clone 7H12) - References

- Suedhof T.C., et al. *Nucleic Acids Res.* 15:9607-9607(1987).
Oezcelik T., et al. *Am. J. Hum. Genet.* 47:551-561(1990).
Fisher S.E., et al. *Genomics* 45:340-347(1997).
Ota T., et al. *Nat. Genet.* 36:40-45(2004).
Ross M.T., et al. *Nature* 434:325-337(2005).