

**ETS1 / ETS-1 Antibody (clone 8A8)**  
**Mouse Monoclonal Antibody**  
**Catalog # ALS13195****Specification**

---

**ETS1 / ETS-1 Antibody (clone 8A8) - Product Information**

Application	IF, IHC
Primary Accession	<a href="#">P14921</a>
Reactivity	Human
Host	Mouse
Clonality	Monoclonal
Calculated MW	50kDa KDa

**ETS1 / ETS-1 Antibody (clone 8A8) - Additional Information****Gene ID** 2113**Other Names**

Protein C-ets-1, p54, ETS1, EWSR2

**Target/Specificity**

Human ETS1

**Reconstitution & Storage**

Long term: -20°C; Short term: +4°C. Avoid repeat freeze-thaw cycles.

**Precautions**

ETS1 / ETS-1 Antibody (clone 8A8) is for research use only and not for use in diagnostic or therapeutic procedures.

**ETS1 / ETS-1 Antibody (clone 8A8) - Protein Information****Name** ETS1**Synonyms** EWSR2**Function**

Transcription factor (PubMed: [10698492](http://www.uniprot.org/citations/10698492), PubMed: [11909962](http://www.uniprot.org/citations/11909962)). Directly controls the expression of cytokine and chemokine genes in a wide variety of different cellular contexts (PubMed: [20378371](http://www.uniprot.org/citations/20378371)). May control the differentiation, survival and proliferation of lymphoid cells (PubMed: [20378371](http://www.uniprot.org/citations/20378371)). May also regulate angiogenesis through regulation of expression of genes controlling endothelial cell migration and invasion (PubMed: [15247905](http://www.uniprot.org/citations/15247905), PubMed: [15592518](http://www.uniprot.org/citations/15592518)).

**Cellular Location**

Nucleus. Cytoplasm Note=Delocalizes from nucleus to cytoplasm when coexpressed with isoform Ets-1 p27.

**Tissue Location**

Highly expressed within lymphoid cells. Isoforms c- ETS-1A and Ets-1 p27 are both detected in all fetal tissues tested, but vary with tissue type in adult tissues. None is detected in brain or kidney.

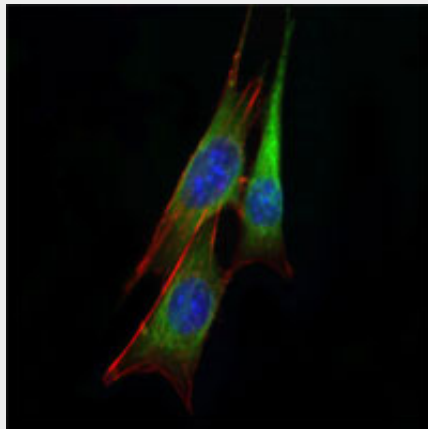
**Volume**

50  $\mu$ l

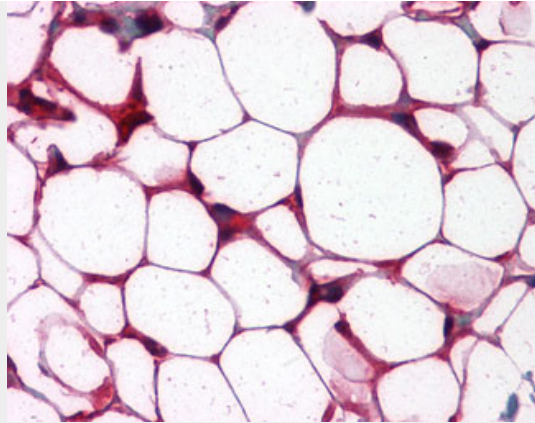
**ETS1 / ETS-1 Antibody (clone 8A8) - Protocols**

Provided below are standard protocols that you may find useful for product applications.

- [Western Blot](#)
- [Blocking Peptides](#)
- [Dot Blot](#)
- [Immunohistochemistry](#)
- [Immunofluorescence](#)
- [Immunoprecipitation](#)
- [Flow Cytometry](#)
- [Cell Culture](#)

**ETS1 / ETS-1 Antibody (clone 8A8) - Images**

Immunofluorescence of NIH/3T3 cells using anti-ETS1 monoclonal antibody (green).



Anti-ETS1 antibody IHC of human colon-adipose.

### **ETS1 / ETS-1 Antibody (clone 8A8) - Background**

Transcription factor. Directly controls the expression of cytokine and chemokine genes in a wide variety of different cellular contexts. May control the differentiation, survival and proliferation of lymphoid cells. May also regulate angiogenesis through regulation of expression of genes controlling endothelial cell migration and invasion.

### **ETS1 / ETS-1 Antibody (clone 8A8) - References**

Reddy E.S.P.,et al.Oncogene Res. 3:239-246(1988).  
Watson D.K.,et al.Proc. Natl. Acad. Sci. U.S.A. 85:7862-7866(1988).  
Laitem C.,et al.Oncogene 28:2087-2099(2009).  
Kalnine N.,et al.Submitted (MAY-2003) to the EMBL/GenBank/DDBJ databases.  
Bechtel S.,et al.BMC Genomics 8:399-399(2007).