

CSF1 / MCSF Antibody (clone 2D10)
Mouse Monoclonal Antibody
Catalog # ALS13186

Specification

CSF1 / MCSF Antibody (clone 2D10) - Product Information

Application	IHC
Primary Accession	P09603
Reactivity	Human
Host	Mouse
Clonality	Monoclonal
Calculated MW	60kDa KDa

CSF1 / MCSF Antibody (clone 2D10) - Additional Information

Gene ID 1435

Other Names

Macrophage colony-stimulating factor 1, CSF-1, M-CSF, MCSF, Lanimostim, Processed macrophage colony-stimulating factor 1, CSF1

Target/Specificity

Human CSF1

Reconstitution & Storage

Long term: -20°C; Short term: +4°C. Avoid repeat freeze-thaw cycles.

Precautions

CSF1 / MCSF Antibody (clone 2D10) is for research use only and not for use in diagnostic or therapeutic procedures.

CSF1 / MCSF Antibody (clone 2D10) - Protein Information

Name CSF1

Function

Cytokine that plays an essential role in the regulation of survival, proliferation and differentiation of hematopoietic precursor cells, especially mononuclear phagocytes, such as macrophages and monocytes. Promotes the release of pro-inflammatory chemokines, and thereby plays an important role in innate immunity and in inflammatory processes. Plays an important role in the regulation of osteoclast proliferation and differentiation, the regulation of bone resorption, and is required for normal bone development. Required for normal male and female fertility. Promotes reorganization of the actin cytoskeleton, regulates formation of membrane ruffles, cell adhesion and cell migration. Plays a role in lipoprotein clearance.

Cellular Location

Cell membrane; Single-pass type I membrane protein

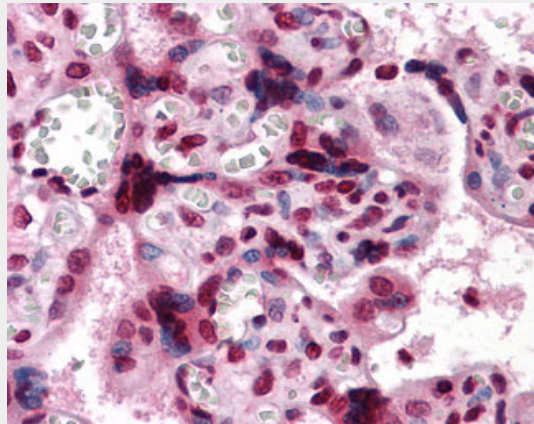
Volume
50 µl

CSF1 / MCSF Antibody (clone 2D10) - Protocols

Provided below are standard protocols that you may find useful for product applications.

- [Western Blot](#)
- [Blocking Peptides](#)
- [Dot Blot](#)
- [Immunohistochemistry](#)
- [Immunofluorescence](#)
- [Immunoprecipitation](#)
- [Flow Cytometry](#)
- [Cell Culture](#)

CSF1 / MCSF Antibody (clone 2D10) - Images



Anti-CSF1 / MCSF antibody IHC of human placenta.

CSF1 / MCSF Antibody (clone 2D10) - Background

Cytokine that plays an essential role in the regulation of survival, proliferation and differentiation of hematopoietic precursor cells, especially mononuclear phagocytes, such as macrophages and monocytes. Promotes the release of proinflammatory chemokines, and thereby plays an important role in innate immunity and in inflammatory processes. Plays an important role in the regulation of osteoclast proliferation and differentiation, the regulation of bone resorption, and is required for normal bone development. Required for normal male and female fertility. Promotes reorganization of the actin cytoskeleton, regulates formation of membrane ruffles, cell adhesion and cell migration. Plays a role in lipoprotein clearance.

CSF1 / MCSF Antibody (clone 2D10) - References

- Kawasaki E.S., et al. *Science* 230:291-296(1985).
Wong G.G., et al. *Science* 235:1504-1508(1987).
Cerretti D.P., et al. *Mol. Immunol.* 25:761-770(1988).
Takahashi M., et al. *Biochem. Biophys. Res. Commun.* 161:892-901(1989).
Ota T., et al. *Nat. Genet.* 36:40-45(2004).