

KRT15 / CK15 / Cytokeratin 15 Antibody (clone 6E7)
Mouse Monoclonal Antibody
Catalog # ALS13174**Specification**

KRT15 / CK15 / Cytokeratin 15 Antibody (clone 6E7) - Product Information

Application	IF, IHC
Primary Accession	P19012
Reactivity	Human
Host	Mouse
Clonality	Monoclonal
Calculated MW	49kDa KDa

KRT15 / CK15 / Cytokeratin 15 Antibody (clone 6E7) - Additional Information**Gene ID** 3866**Other Names**

Keratin, type I cytoskeletal 15, Cytokeratin-15, CK-15, Keratin-15, K15, KRT15, KRTB

Target/Specificity

Human KRT15

Reconstitution & Storage

Long term: -20°C; Short term: +4°C. Avoid repeat freeze-thaw cycles.

Precautions

KRT15 / CK15 / Cytokeratin 15 Antibody (clone 6E7) is for research use only and not for use in diagnostic or therapeutic procedures.

KRT15 / CK15 / Cytokeratin 15 Antibody (clone 6E7) - Protein Information**Name** KRT15**Synonyms** KRTB**Tissue Location**

Expressed in a discontinuous manner in the basal cell layer of adult skin epidermis, but continuously in the basal layer of fetal skin epidermis and nail. Also expressed in the outer root sheath above the hair bulb in hair follicle (at protein level) Expressed homogeneously in all cell layers of the esophagus and exocervix, but detected in the basal cell layer only of oral mucosa, skin and in the basal plus the next two layers of the suprabasal epithelium of the palate.

Volume

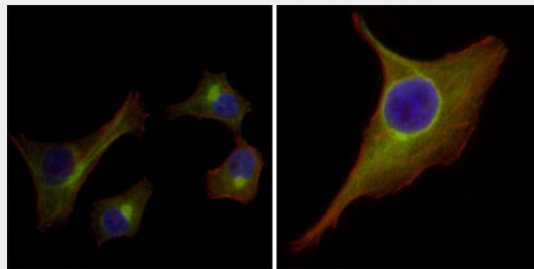
50 µl

KRT15 / CK15 / Cytokeratin 15 Antibody (clone 6E7) - Protocols

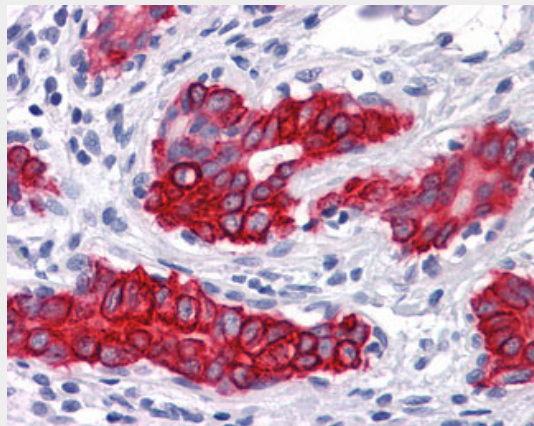
Provided below are standard protocols that you may find useful for product applications.

- [Western Blot](#)
- [Blocking Peptides](#)
- [Dot Blot](#)
- [Immunohistochemistry](#)
- [Immunofluorescence](#)
- [Immunoprecipitation](#)
- [Flow Cytometry](#)
- [Cell Culture](#)

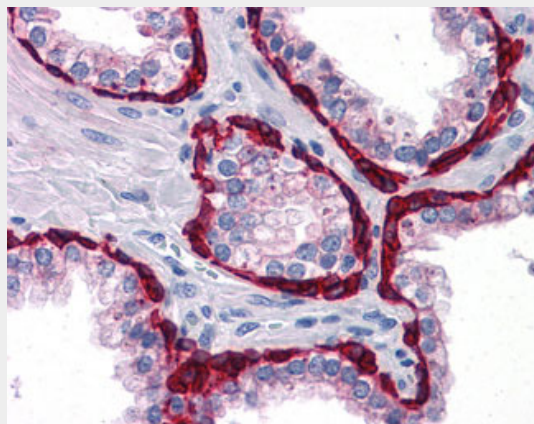
KRT15 / CK15 / Cytokeratin 15 Antibody (clone 6E7) - Images



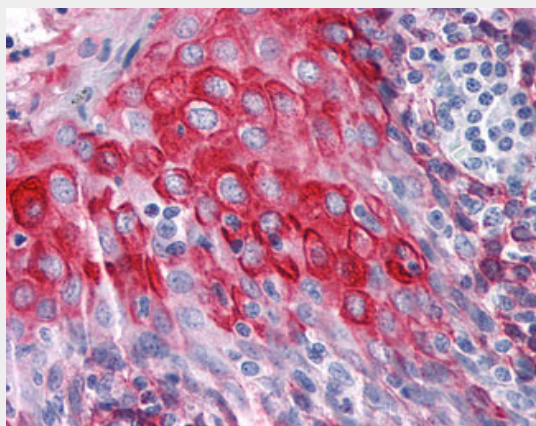
Immunofluorescence of HepG2(left) and PACN-1 (right) cells using KRT15 mouse monoclonal antibody...



Anti-KRT15 / Cytokeratin 15 antibody IHC of human breast.



Anti-KRT15 / Cytokeratin 15 antibody IHC of human prostate.



Anti-KRT15 / Cytokeratin 15 antibody IHC of human tonsil.

KRT15 / CK15 / Cytokeratin 15 Antibody (clone 6E7) - References

- Bader B.L.,et al.Eur. J. Cell Biol. 47:300-319(1988).
Leube R.E.,et al.J. Cell Biol. 106:1249-1261(1988).
Whittock N.V.,et al.Biochem. Biophys. Res. Commun. 267:462-465(2000).
Kalnine N.,et al.Submitted (MAY-2003) to the EMBL/GenBank/DDBJ databases.
Ota T.,et al.Nat. Genet. 36:40-45(2004).