

GPI Antibody (clone 1B7D7)
Mouse Monoclonal Antibody
Catalog # ALS13147**Specification**

GPI Antibody (clone 1B7D7) - Product Information

Application	WB, IF
Primary Accession	P06744
Reactivity	Human
Host	Mouse
Clonality	Monoclonal
Calculated MW	63kDa KDa

GPI Antibody (clone 1B7D7) - Additional Information**Gene ID** 2821**Other Names**

Glucose-6-phosphate isomerase, GPI, 5.3.1.9, Autocrine motility factor, AMF, Neuroleukin, NLK, Phosphoglucose isomerase, PGI, Phosphohexose isomerase, PHI, Sperm antigen 36, SA-36, GPI

Target/Specificity

Human GPI

Reconstitution & Storage

Long term: -20°C; Short term: +4°C. Avoid repeat freeze-thaw cycles.

Precautions

GPI Antibody (clone 1B7D7) is for research use only and not for use in diagnostic or therapeutic procedures.

GPI Antibody (clone 1B7D7) - Protein Information**Name** GPI {ECO:0000303|PubMed:2387591, ECO:0000312|HGNC:HGNC:4458}**Function**

In the cytoplasm, catalyzes the conversion of glucose-6-phosphate to fructose-6-phosphate, the second step in glycolysis, and the reverse reaction during gluconeogenesis (PubMed:28803808). Besides its role as a glycolytic enzyme, also acts as a secreted cytokine: acts as an angiogenic factor (AMF) that stimulates endothelial cell motility (PubMed:11437381). Acts as a neurotrophic factor, neuroleukin, for spinal and sensory neurons (PubMed:11004567, PubMed:3352745). It is secreted by lectin-stimulated T-cells and induces immunoglobulin secretion (PubMed:11004567, PubMed:3352745).

Cellular Location
Cytoplasm. Secreted

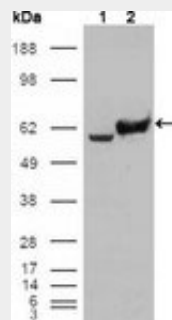
Volume
50 μ l

GPI Antibody (clone 1B7D7) - Protocols

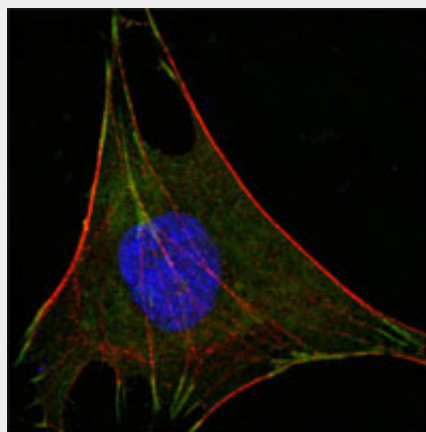
Provided below are standard protocols that you may find useful for product applications.

- [Western Blot](#)
- [Blocking Peptides](#)
- [Dot Blot](#)
- [Immunohistochemistry](#)
- [Immunofluorescence](#)
- [Immunoprecipitation](#)

GPI Antibody (clone 1B7D7) - Images



Western blot using GPI mouse monoclonal antibody against HEK293T cells transfected with the...



Confocal immunofluorescence of L-02 cells using GPI mouse monoclonal antibody (green).

GPI Antibody (clone 1B7D7) - Background

Besides its role as a glycolytic enzyme, mammalian GPI can function as a tumor-secreted cytokine and an angiogenic factor (AMF) that stimulates endothelial cell motility. GPI is also a neurotrophic factor (Neuroleukin) for spinal and sensory neurons.

GPI Antibody (clone 1B7D7) - References

- Gurney M.E., et al. Submitted (MAR-1987) to the EMBL/GenBank/DDBJ databases.
Yakirevich E., et al. Biol. Reprod. 62:1016-1023(2000).
Ota T., et al. Nat. Genet. 36:40-45(2004).
Grimwood J., et al. Nature 428:529-535(2004).
Walker J.I.H., et al. Genomics 7:638-643(1990).