

OR51E1 Antibody
Rabbit Polyclonal Antibody
Catalog # ALS13140**Specification**

OR51E1 Antibody - Product Information

Application	WB
Primary Accession	Q8TCB6
Reactivity	Human
Host	Rabbit
Clonality	Polyclonal
Calculated MW	35kDa KDa

OR51E1 Antibody - Additional Information**Gene ID** 143503**Other Names**

Olfactory receptor 51E1, D-GPCR, G-protein coupled receptor 164, Olfactory receptor 52A3, Prostate-overexpressed G protein-coupled receptor, Prostate-specific G protein-coupled receptor 2, OR51E1, GPR164, OR51E1P, OR52A3P, POGR, PSGR2

Target/Specificity

Human GPR164.

Reconstitution & Storage

Aliquot and store at -20°C. Minimize freezing and thawing.

Precautions

OR51E1 Antibody is for research use only and not for use in diagnostic or therapeutic procedures.

OR51E1 Antibody - Protein Information**Name** OR51E1**Synonyms** GPR164, OR51E1P, OR52A3P, POGR, PSGR2**Function**

Odorant receptor.

Cellular Location

Cell membrane; Multi-pass membrane protein

Tissue Location

Highly expressed in prostate. Very low levels may be detected in some other tissues, such as placenta, skeletal muscle, heart, ovary and testis. Up-regulated in prostate cancers

Volume

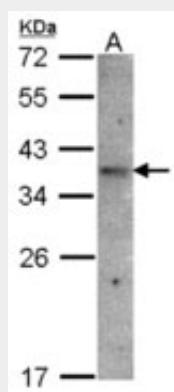
50 μ l

OR51E1 Antibody - Protocols

Provided below are standard protocols that you may find useful for product applications.

- [Western Blot](#)
- [Blocking Peptides](#)
- [Dot Blot](#)
- [Immunohistochemistry](#)
- [Immunofluorescence](#)
- [Immunoprecipitation](#)
- [Flow Cytometry](#)
- [Cell Culture](#)

OR51E1 Antibody - Images



Sample(30 g of whole cell lysate). A: Raji. 12% SDS PAGE. OR51E1 antibody diluted at 1:1500.

OR51E1 Antibody - Background

Odorant receptor.

OR51E1 Antibody - References

- Weigle B.,et al.Biochem. Biophys. Res. Commun. 322:239-249(2004).
Suwa M.,et al.Submitted (JUL-2001) to the EMBL/GenBank/DDBJ databases.
Weng J.,et al.Int. J. Cancer 118:1471-1480(2006).
Ota T.,et al.Nat. Genet. 36:40-45(2004).
Mural R.J.,et al.Submitted (SEP-2005) to the EMBL/GenBank/DDBJ databases.