

**GALR2 / Galanin Receptor 2 Antibody**  
**Rabbit Polyclonal Antibody**  
**Catalog # ALS13137****Specification**

---

**GALR2 / Galanin Receptor 2 Antibody - Product Information**

Application	<b>WB, IHC</b>
Primary Accession	<a href="#">O43603</a>
Reactivity	<b>Human</b>
Host	<b>Rabbit</b>
Clonality	<b>Polyclonal</b>
Calculated MW	<b>42kDa KDa</b>

**GALR2 / Galanin Receptor 2 Antibody - Additional Information****Gene ID** 8811**Other Names**

Galanin receptor type 2, GAL2-R, GALR-2, GALR2, GALNR2

**Target/Specificity**

Human Galanin receptor 2.

**Reconstitution & Storage**

Aliquot and store at -20°C. Minimize freezing and thawing.

**Precautions**

GALR2 / Galanin Receptor 2 Antibody is for research use only and not for use in diagnostic or therapeutic procedures.

**GALR2 / Galanin Receptor 2 Antibody - Protein Information****Name** GALR2**Synonyms** GALNR2**Function**

Receptor for the hormone galanin and GALP. Receptor for the hormone spexin-1 (PubMed:&lt;a href="http://www.uniprot.org/citations/24517231" target="\_blank"&gt;24517231&lt;/a&gt;). The activity of this receptor is mediated by G proteins that activate the phospholipase C/protein kinase C pathway (via G(q)) and that inhibit adenylyl cyclase (via G(i)).

**Cellular Location**

Cell membrane; Multi-pass membrane protein.

**Tissue Location**

Expressed abundantly within the central nervous system in both hypothalamus and hippocampus. In peripheral tissues, the strongest expression was observed in heart, kidney, liver, and small

intestine

**Volume**

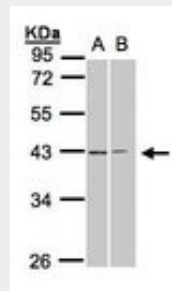
50  $\mu$ l

**GALR2 / Galanin Receptor 2 Antibody - Protocols**

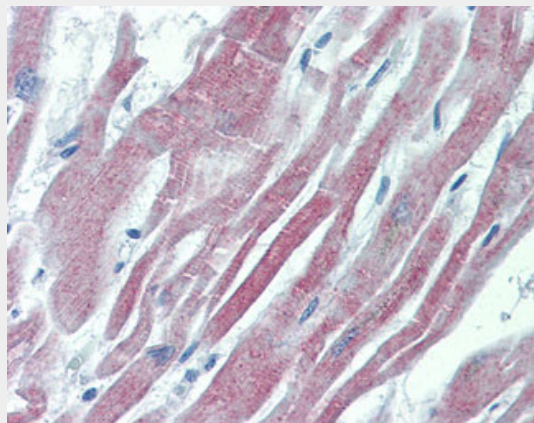
Provided below are standard protocols that you may find useful for product applications.

- [Western Blot](#)
- [Blocking Peptides](#)
- [Dot Blot](#)
- [Immunohistochemistry](#)
- [Immunofluorescence](#)
- [Immunoprecipitation](#)
- [Flow Cytometry](#)
- [Cell Culture](#)

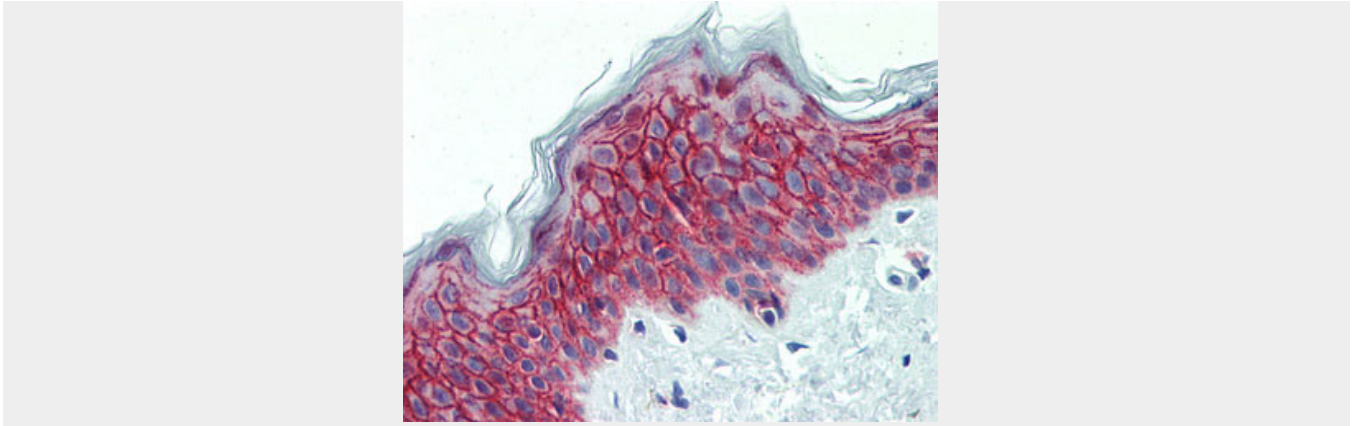
**GALR2 / Galanin Receptor 2 Antibody - Images**



Sample(30 ug whole cell lysate). A:293T. B: H1299. 10% SDS PAGE. GALR2 antibody diluted at 1:1000.



Anti-GALR2 antibody IHC of human heart.



Anti-GALR2 antibody IHC of human skin.

### **GALR2 / Galanin Receptor 2 Antibody - Background**

Receptor for the hormone galanin and GALP. Receptor for the hormone spexin-1 (PubMed:24517231). The activity of this receptor is mediated by G proteins that activate the phospholipase C/protein kinase C pathway (via G(q)) and that inhibit adenylyl cyclase (via G(i)).

### **GALR2 / Galanin Receptor 2 Antibody - References**

Bloomquist B.T., et al. *Biochem. Biophys. Res. Commun.* 243:474-479(1998).  
Borowsky B., et al. *Peptides* 19:1771-1781(1998).  
Fathi Z., et al. *Brain Res. Mol. Brain Res.* 58:156-169(1998).  
Kolakowski L.F. Jr., et al. *J. Neurochem.* 71:2239-2251(1998).  
Martin A.L., et al. Submitted (APR-2007) to the EMBL/GenBank/DDBJ databases.

### **GALR2 / Galanin Receptor 2 Antibody - Citations**

- [Spexin: A novel regulator of adipogenesis and fat tissue metabolism.](#)