

ACVRL1 Antibody
Rabbit Polyclonal Antibody
Catalog # ALS13125**Specification**

ACVRL1 Antibody - Product Information

Application	WB, IHC
Primary Accession	P37023
Reactivity	Human
Host	Rabbit
Clonality	Polyclonal
Calculated MW	56kDa KDa

ACVRL1 Antibody - Additional Information**Gene ID** 94**Other Names**

Serine/threonine-protein kinase receptor R3, SKR3, 2.7.11.30, Activin receptor-like kinase 1, ALK-1, TGF-B superfamily receptor type I, TSR-I, ACVRL1, ACVRLK1, ALK1

Target/Specificity

Human ACVRL1.

Reconstitution & Storage

Store at -20°C or lower. Aliquot to avoid repeated freezing and thawing.

Precautions

ACVRL1 Antibody is for research use only and not for use in diagnostic or therapeutic procedures.

ACVRL1 Antibody - Protein Information**Name** ACVRL1**Synonyms** ACVRLK1, ALK1**Function**

Type I receptor for TGF-beta family ligands BMP9/GDF2 and BMP10 and important regulator of normal blood vessel development. On ligand binding, forms a receptor complex consisting of two type II and two type I transmembrane serine/threonine kinases. Type II receptors phosphorylate and activate type I receptors which autophosphorylate, then bind and activate SMAD transcriptional regulators. May bind activin as well.

Cellular Location

Cell membrane; Single-pass type I membrane protein

Volume

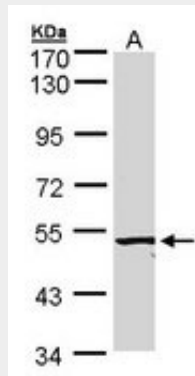
50 µl

ACVRL1 Antibody - Protocols

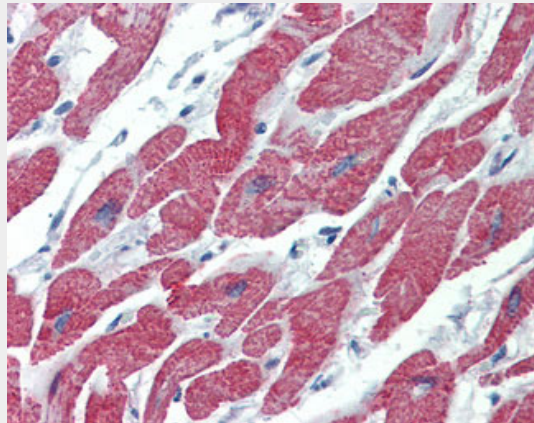
Provided below are standard protocols that you may find useful for product applications.

- [Western Blot](#)
- [Blocking Peptides](#)
- [Dot Blot](#)
- [Immunohistochemistry](#)
- [Immunofluorescence](#)
- [Immunoprecipitation](#)
- [Flow Cytometry](#)
- [Cell Culture](#)

ACVRL1 Antibody - Images



Sample (20 ug of whole cell lysate).



Anti-ALK-1 antibody IHC of human heart.

ACVRL1 Antibody - Background

Type I receptor for TGF-beta family ligands BMP9/GDF2 and BMP10 and important regulator of normal blood vessel development. On ligand binding, forms a receptor complex consisting of two type II and two type I transmembrane serine/threonine kinases. Type II receptors phosphorylate and activate type I receptors which autophosphorylate, then bind and activate SMAD transcriptional regulators. May bind activin as well.

ACVRL1 Antibody - References

ten Dijke P., et al. *Oncogene* 8:2879-2887(1993).
Attisano L., et al. *Cell* 75:671-680(1993).
Berg J.N., et al. *Am. J. Hum. Genet.* 61:60-67(1997).
Scherer S.E., et al. *Nature* 440:346-351(2006).
Mural R.J., et al. Submitted (JUL-2005) to the EMBL/GenBank/DDBJ databases.