

SDC1 / Syndecan 1 / CD138 Antibody (clone DL-101)
Mouse Monoclonal Antibody
Catalog # ALS13119**Specification**

SDC1 / Syndecan 1 / CD138 Antibody (clone DL-101) - Product Information

Application	IHC
Primary Accession	P18827
Reactivity	Human
Host	Mouse
Clonality	Monoclonal
Calculated MW	32kDa KDa

SDC1 / Syndecan 1 / CD138 Antibody (clone DL-101) - Additional Information**Gene ID** 6382**Other Names**

Syndecan-1, SYND1, CD138, SDC1, SDC

Reconstitution & Storage

Store at 4°C, avoid repeated freeze thaw cycles.

Precautions

SDC1 / Syndecan 1 / CD138 Antibody (clone DL-101) is for research use only and not for use in diagnostic or therapeutic procedures.

SDC1 / Syndecan 1 / CD138 Antibody (clone DL-101) - Protein Information**Name** SDC1 ([HGNC:10658](#))**Synonyms** SDC**Function**

Cell surface proteoglycan that contains both heparan sulfate and chondroitin sulfate and that links the cytoskeleton to the interstitial matrix (By similarity). Regulates exosome biogenesis in concert with SDCBP and PDCD6IP (PubMed:22660413). Able to induce its own expression in dental mesenchymal cells and also in the neighboring dental epithelial cells via an MSX1-mediated pathway (By similarity).

Cellular LocationMembrane; Single-pass type I membrane protein. Secreted Secreted, extracellular exosome
Note=Shedding of the ectodomain produces a soluble form**Tissue Location**

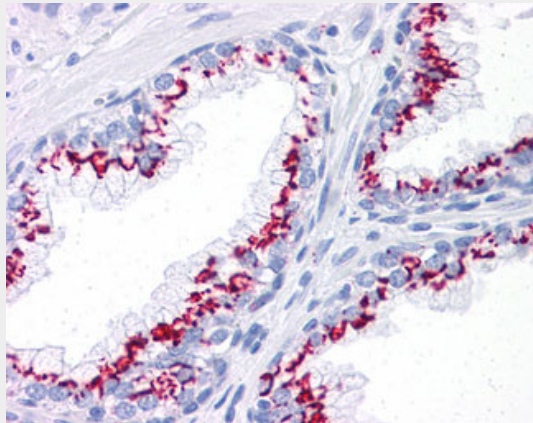
Detected in placenta (at protein level) (PubMed:32337544). Detected in fibroblasts (at protein level) (PubMed:36213313).

SDC1 / Syndecan 1 / CD138 Antibody (clone DL-101) - Protocols

Provided below are standard protocols that you may find useful for product applications.

- [Western Blot](#)
- [Blocking Peptides](#)
- [Dot Blot](#)
- [Immunohistochemistry](#)
- [Immunofluorescence](#)
- [Immunoprecipitation](#)
- [Flow Cytometry](#)
- [Cell Culture](#)

SDC1 / Syndecan 1 / CD138 Antibody (clone DL-101) - Images



Anti-CD138 antibody IHC of human prostate.

SDC1 / Syndecan 1 / CD138 Antibody (clone DL-101) - Background

Cell surface proteoglycan that bears both heparan sulfate and chondroitin sulfate and that links the cytoskeleton to the interstitial matrix.

SDC1 / Syndecan 1 / CD138 Antibody (clone DL-101) - References

- Lories V., et al. J. Biol. Chem. 267:1116-1122(1992).
Mali M., et al. J. Biol. Chem. 265:6884-6889(1990).
Mennerich D., et al. Eur. J. Cancer 40:1373-1382(2004).
Hillier L.W., et al. Nature 434:724-731(2005).
Mural R.J., et al. Submitted (SEP-2005) to the EMBL/GenBank/DDBJ databases.