

FCER2 / CD23 Antibody (clone EBVCS2)
Mouse Monoclonal Antibody
Catalog # ALS13118**Specification**

FCER2 / CD23 Antibody (clone EBVCS2) - Product Information

Application	IHC
Primary Accession	P06734
Reactivity	Human
Host	Mouse
Clonality	Monoclonal
Calculated MW	36kDa KDa

FCER2 / CD23 Antibody (clone EBVCS2) - Additional Information**Gene ID** 2208**Other Names**

Low affinity immunoglobulin epsilon Fc receptor, BLAST-2, C-type lectin domain family 4 member J, Fc-epsilon-R1I, Immunoglobulin E-binding factor, Lymphocyte IgE receptor, CD23, Low affinity immunoglobulin epsilon Fc receptor membrane-bound form, Low affinity immunoglobulin epsilon Fc receptor soluble form, FCER2, CD23A, CLEC4J, FCE2, IGEBF

Reconstitution & Storage

Store at 4°C, avoid repeated freeze thaw cycles.

Precautions

FCER2 / CD23 Antibody (clone EBVCS2) is for research use only and not for use in diagnostic or therapeutic procedures.

FCER2 / CD23 Antibody (clone EBVCS2) - Protein Information**Name** FCER2**Synonyms** CD23A, CLEC4J, FCE2, IGEBF**Function**

Low-affinity receptor for immunoglobulin E (IgE) and CR2/CD21. Has essential roles in the regulation of IgE production and in the differentiation of B cells. On B cells, initiates IgE-dependent antigen uptake and presentation to T cells (PubMed: [2167225](http://www.uniprot.org/citations/2167225)). On macrophages, upon IgE binding and antigen cross-linking induces intracellular killing of parasites through activation of L-Arginine- nitric oxide pathway (PubMed: [7544003](http://www.uniprot.org/citations/7544003)).

Cellular Location

Cell membrane; Single-pass type II membrane protein. Cell membrane; Lipid-anchor. Secreted. Note=Also exists as a soluble excreted form, sCD23

Tissue Location

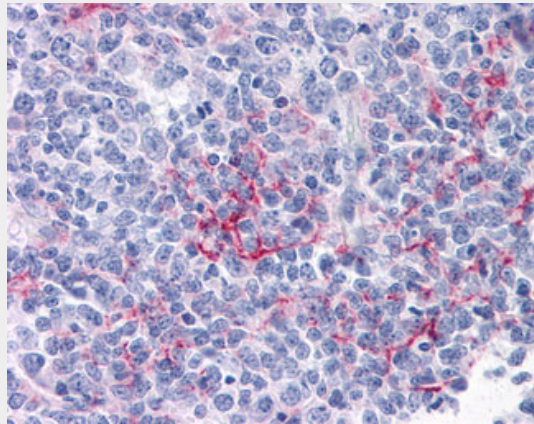
Detected in urine (at protein level).

FCER2 / CD23 Antibody (clone EBVCS2) - Protocols

Provided below are standard protocols that you may find useful for product applications.

- [Western Blot](#)
- [Blocking Peptides](#)
- [Dot Blot](#)
- [Immunohistochemistry](#)
- [Immunofluorescence](#)
- [Immunoprecipitation](#)
- [Flow Cytometry](#)
- [Cell Culture](#)

FCER2 / CD23 Antibody (clone EBVCS2) - Images



Anti-FCER2 / CD23 antibody IHC of human tonsil.

FCER2 / CD23 Antibody (clone EBVCS2) - Background

Low-affinity receptor for immunoglobulin E (IgE) and CR2/CD21. Has essential roles in the regulation of IgE production and in the differentiation of B-cells (it is a B-cell-specific antigen).

FCER2 / CD23 Antibody (clone EBVCS2) - References

- Ikuta K., et al. Proc. Natl. Acad. Sci. U.S.A. 84:819-823(1987).
Kikutani H., et al. Cell 47:657-665(1986).
Luedin C., et al. EMBO J. 6:109-114(1987).
Grimwood J., et al. Nature 428:529-535(2004).
Yokota A., et al. Cell 55:611-618(1988).