

**CCR4 Antibody (Extracellular Domain)**  
**Goat Polyclonal Antibody**  
**Catalog # ALS13112**

**Specification**

---

**CCR4 Antibody (Extracellular Domain) - Product Information**

Application	IHC
Primary Accession	<a href="#">P51679</a>
Reactivity	Human, Monkey
Host	Goat
Clonality	Polyclonal
Calculated MW	41kDa KDa

**CCR4 Antibody (Extracellular Domain) - Additional Information**

**Gene ID** 1233

**Other Names**

C-C chemokine receptor type 4, C-C CKR-4, CC-CKR-4, CCR-4, CCR4, K5-5, CD194, CCR4, CMKBR4

**Target/Specificity**

Peptide sequence is <50% identical to other chemokine receptors in this region.

**Reconstitution & Storage**

Long term: -70°C; Short term: -20°C; Avoid freeze-thaw cycles.

**Precautions**

CCR4 Antibody (Extracellular Domain) is for research use only and not for use in diagnostic or therapeutic procedures.

**CCR4 Antibody (Extracellular Domain) - Protein Information**

**Name** CCR4

**Synonyms** CMKBR4

**Function**

High affinity receptor for the C-C type chemokines CCL17/TARC, CCL22/MDC and CKLF isoform 1/CKLF1. The activity of this receptor is mediated by G(i) proteins which activate a phosphatidylinositol-calcium second messenger system. Can function as a chemoattractant homing receptor on circulating memory lymphocytes and as a coreceptor for some primary HIV-2 isolates. In the CNS, could mediate hippocampal-neuron survival.

**Cellular Location**

Cell membrane; Multi-pass membrane protein.

**Tissue Location**

Predominantly expressed in the thymus, in peripheral blood leukocytes, including T-cells, mostly

CD4+ cells, and basophils, and in platelets; at lower levels, in the spleen and in monocytes (PubMed:10754297, PubMed:9169480). Detected also in macrophages, IL-2-activated natural killer cells and skin-homing memory T-cells, mostly the ones expressing the cutaneous lymphocyte antigen (CLA). Expressed in brain microvascular and coronary artery endothelial cells (PubMed:10754297).

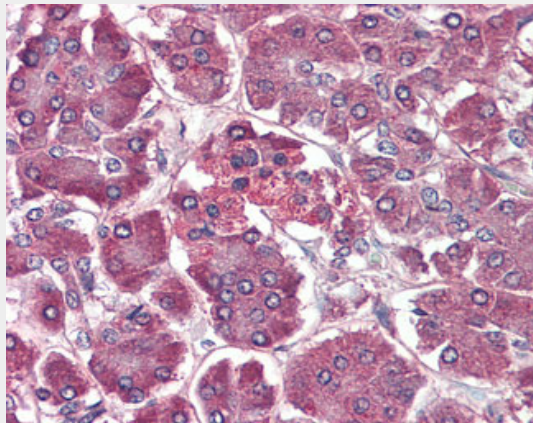
**Volume**

50 µl

**CCR4 Antibody (Extracellular Domain) - Protocols**

Provided below are standard protocols that you may find useful for product applications.

- [Western Blot](#)
- [Blocking Peptides](#)
- [Dot Blot](#)
- [Immunohistochemistry](#)
- [Immunofluorescence](#)
- [Immunoprecipitation](#)
- [Flow Cytometry](#)
- [Cell Culture](#)

**CCR4 Antibody (Extracellular Domain) - Images**

Anti-CCR4 antibody IHC of human pancreas.

**CCR4 Antibody (Extracellular Domain) - Background**

High affinity receptor for the C-C type chemokines CCL17/TARC, CCL22/MDC and CKLF isoform 1/CKLF1. The activity of this receptor is mediated by G(i) proteins which activate a phosphatidylinositol-calcium second messenger system. Can function as a chemoattractant homing receptor on circulating memory lymphocytes and as a coreceptor for some primary HIV-2 isolates. In the CNS, could mediate hippocampal-neuron survival.

**CCR4 Antibody (Extracellular Domain) - References**

- Power C.A., et al. *J. Biol. Chem.* 270:19495-19500(1995).  
Kato H., et al. *Genes Immun.* 1:97-104(1999).  
Kopatz S.A., et al. Submitted (JUN-2003) to the EMBL/GenBank/DDBJ databases.  
Imai T., et al. *J. Biol. Chem.* 272:15036-15042(1997).  
Imai T., et al. *J. Biol. Chem.* 273:1764-1768(1998).

