

**IGSF4C / CADM4 Antibody (Internal)**  
**Goat Polyclonal Antibody**  
**Catalog # ALS13099**

**Specification**

---

**IGSF4C / CADM4 Antibody (Internal) - Product Information**

Application	IHC
Primary Accession	<a href="#">Q8NFZ8</a>
Reactivity	Human, Mouse, Rat, Rabbit, Monkey, Pig, Horse, Bovine, Dog
Host	Goat
Clonality	Polyclonal
Calculated MW	43kDa KDa

**IGSF4C / CADM4 Antibody (Internal) - Additional Information**

**Gene ID** 199731

**Other Names**

Cell adhesion molecule 4, Immunoglobulin superfamily member 4C, IgSF4C, Nectin-like protein 4, NECL-4, TSLC1-like protein 2, CADM4, IGSF4C, NECL4, TSLL2

**Target/Specificity**

Human CADM4 / NECL-4.

**Reconstitution & Storage**

Store at -20°C. Minimize freezing and thawing.

**Precautions**

IGSF4C / CADM4 Antibody (Internal) is for research use only and not for use in diagnostic or therapeutic procedures.

**IGSF4C / CADM4 Antibody (Internal) - Protein Information**

**Name** CADM4

**Synonyms** IGSF4C, NECL4, TSLL2

**Function**

Involved in the cell-cell adhesion. Has calcium- and magnesium-independent cell-cell adhesion activity. May have tumor- suppressor activity.

**Cellular Location**

Membrane; Single-pass type I membrane protein

**Tissue Location**

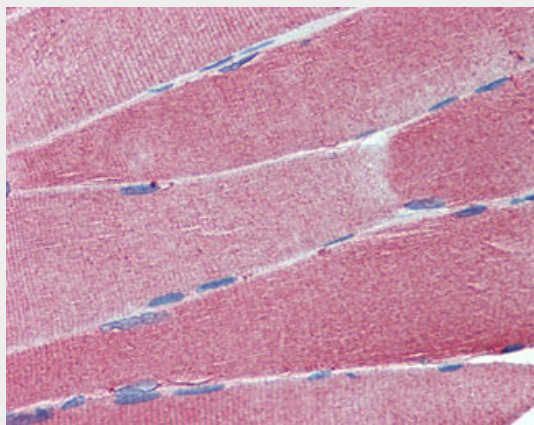
Expressed in brain, prostate, brain, kidney and some other organs.

## IGSF4C / CADM4 Antibody (Internal) - Protocols

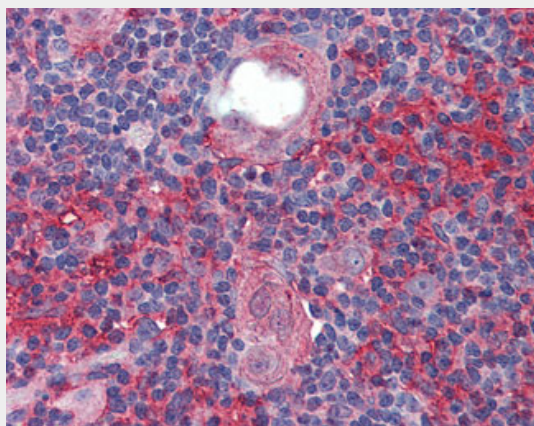
Provided below are standard protocols that you may find useful for product applications.

- [Western Blot](#)
- [Blocking Peptides](#)
- [Dot Blot](#)
- [Immunohistochemistry](#)
- [Immunofluorescence](#)
- [Immunoprecipitation](#)
- [Flow Cytometry](#)
- [Cell Culture](#)

## IGSF4C / CADM4 Antibody (Internal) - Images



Anti-CADM4 / NECL-4 antibody IHC of human skeletal muscle.



Anti-CADM4 / NECL-4 antibody IHC of human thymus.

## IGSF4C / CADM4 Antibody (Internal) - Background

Involved in the cell-cell adhesion. Has calcium- and magnesium-independent cell-cell adhesion activity. May have tumor-suppressor activity.

## IGSF4C / CADM4 Antibody (Internal) - References

Fukuhara H., et al. Oncogene 20:5401-5407(2001).

Ota T., et al. Nat. Genet. 36:40-45(2004).  
Grimwood J., et al. Nature 428:529-535(2004).  
Williams Y.N., et al. Oncogene 25:1446-1453(2006).