

CLEC2D / OCIL / LLT1 Antibody (Internal)
Goat Polyclonal Antibody
Catalog # ALS13098**Specification**

CLEC2D / OCIL / LLT1 Antibody (Internal) - Product Information

Application	IHC
Primary Accession	O9UHP7
Reactivity	Human, Monkey, Horse
Host	Goat
Clonality	Polyclonal
Calculated MW	22kDa KDa

CLEC2D / OCIL / LLT1 Antibody (Internal) - Additional Information**Gene ID** 29121**Other Names**

C-type lectin domain family 2 member D, Lectin-like NK cell receptor, Lectin-like transcript 1, LLT-1, Osteoclast inhibitory lectin, CLEC2D, CLAX, LLT1, OCIL

Target/Specificity

Human CLEC2D.

Reconstitution & Storage

Store at -20°C. Minimize freezing and thawing.

Precautions

CLEC2D / OCIL / LLT1 Antibody (Internal) is for research use only and not for use in diagnostic or therapeutic procedures.

CLEC2D / OCIL / LLT1 Antibody (Internal) - Protein Information**Name** CLEC2D**Synonyms** CLAX, LLT1, OCIL**Function**

Receptor for KLRB1 that protects target cells against natural killer cell-mediated lysis (PubMed: [16339513](http://www.uniprot.org/citations/16339513), PubMed: [20843815](http://www.uniprot.org/citations/20843815)). Inhibits osteoclast formation (PubMed: [14753741](http://www.uniprot.org/citations/14753741), PubMed: [15123656](http://www.uniprot.org/citations/15123656)). Inhibits bone resorption (PubMed: [14753741](http://www.uniprot.org/citations/14753741)). Modulates the release of interferon-gamma (PubMed: [15104121](http://www.uniprot.org/citations/15104121)). Binds high molecular weight sulfated glycosaminoglycans (PubMed: [15123656](http://www.uniprot.org/citations/15123656)).

Cellular Location

Cell membrane; Single-pass type II membrane protein [Isoform 4]: Endoplasmic reticulum

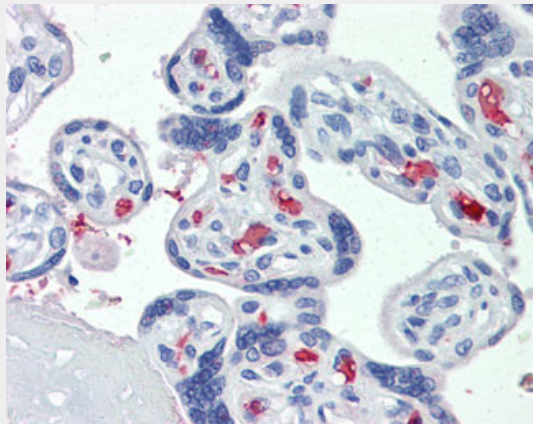
Tissue Location

Detected in peripheral blood leukocytes, osteoblasts, lymph node, thymus and spleen. Isoform 1, isoform 2 and isoform 4 are expressed in T- and B-lymphocytes, and at lower levels in NK cells. They are also expressed in B-cell lines and LPS-matured monocyte-derived dendritic cells.

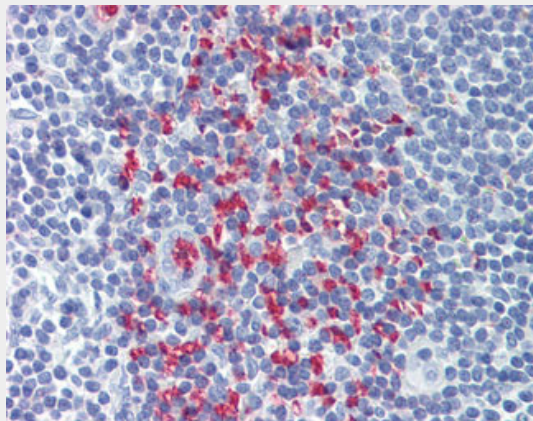
CLEC2D / OCIL / LLT1 Antibody (Internal) - Protocols

Provided below are standard protocols that you may find useful for product applications.

- [Western Blot](#)
- [Blocking Peptides](#)
- [Dot Blot](#)
- [Immunohistochemistry](#)
- [Immunofluorescence](#)
- [Immunoprecipitation](#)
- [Flow Cytometry](#)
- [Cell Culture](#)

CLEC2D / OCIL / LLT1 Antibody (Internal) - Images

Anti-CLEC2D antibody IHC of human placenta.



Anti-CLEC2D antibody IHC of human tonsil.

CLEC2D / OCIL / LLT1 Antibody (Internal) - Background

Receptor for KLRB1 that protects target cells against natural killer cell-mediated lysis. Inhibits osteoclast formation. Inhibits bone resorption. Modulates the release of interferon- gamma. Binds high molecular weight sulfated glycosaminoglycans.

CLEC2D / OCIL / LLT1 Antibody (Internal) - References

Boles K.S.,et al.Immunogenetics 50:1-7(1999).
Hu Y.S.,et al.J. Bone Miner. Res. 19:89-99(2004).
Germain C.,et al.J. Biol. Chem. 285:36207-36215(2010).
Yang G.,et al.Submitted (JUL-2000) to the EMBL/GenBank/DDBJ databases.
Scherer S.E.,et al.Nature 440:346-351(2006).