

**KRT19 / CK19 / Cytokeratin 19 Antibody (C-Terminus, clone E16-L)**  
**Rabbit Polyclonal Antibody**  
**Catalog # ALS13065**

### Specification

---

#### **KRT19 / CK19 / Cytokeratin 19 Antibody (C-Terminus, clone E16-L) - Product Information**

Application	IHC
Primary Accession	<a href="#">P08727</a>
Reactivity	Human
Host	Rabbit
Clonality	Polyclonal
Calculated MW	44kDa KDa

#### **KRT19 / CK19 / Cytokeratin 19 Antibody (C-Terminus, clone E16-L) - Additional Information**

**Gene ID** 3880

#### **Other Names**

Keratin, type I cytoskeletal 19, Cytokeratin-19, CK-19, Keratin-19, K19, KRT19

#### **Target/Specificity**

Human Cytokeratin 19

#### **Reconstitution & Storage**

Long term: -20°C; Short term: +4°C; Avoid freeze-thaw cycles.

#### **Precautions**

KRT19 / CK19 / Cytokeratin 19 Antibody (C-Terminus, clone E16-L) is for research use only and not for use in diagnostic or therapeutic procedures.

#### **KRT19 / CK19 / Cytokeratin 19 Antibody (C-Terminus, clone E16-L) - Protein Information**

**Name** KRT19

#### **Function**

Involved in the organization of myofibers. Together with KRT8, helps to link the contractile apparatus to dystrophin at the costameres of striated muscle.

#### **Tissue Location**

Expressed in a defined zone of basal keratinocytes in the deep outer root sheath of hair follicles. Also observed in sweat gland and mammary gland ductal and secretory cells, bile ducts, gastrointestinal tract, bladder urothelium, oral epithelia, esophagus, ectocervical epithelium (at protein level). Expressed in epidermal basal cells, in nipple epidermis and a defined region of the hair follicle. Also seen in a subset of vascular wall cells in both the veins and artery of human umbilical cord, and in umbilical cord vascular smooth muscle. Observed in muscle fibers accumulating in the costameres of myoplasm at the sarcolemma in structures that contain dystrophin and spectrin.

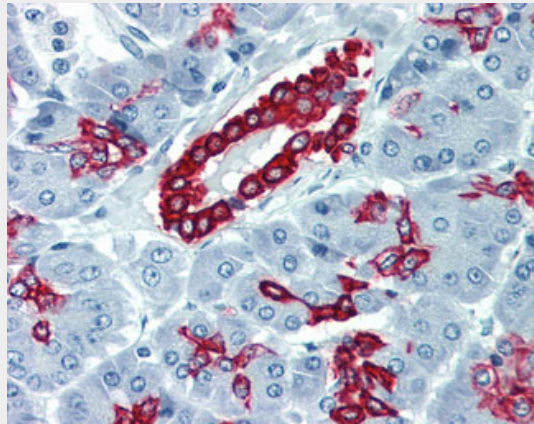
**Volume**  
50  $\mu$ l

### **KRT19 / CK19 / Cytokeratin 19 Antibody (C-Terminus, clone E16-L) - Protocols**

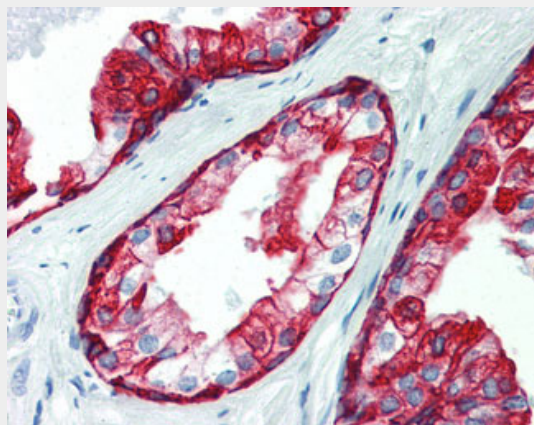
Provided below are standard protocols that you may find useful for product applications.

- [Western Blot](#)
- [Blocking Peptides](#)
- [Dot Blot](#)
- [Immunohistochemistry](#)
- [Immunofluorescence](#)
- [Immunoprecipitation](#)
- [Flow Cytometry](#)
- [Cell Culture](#)

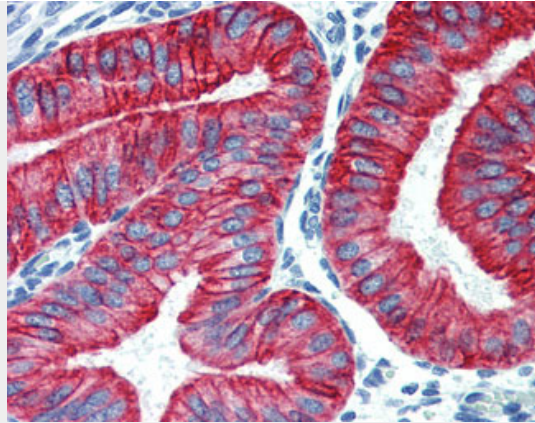
### **KRT19 / CK19 / Cytokeratin 19 Antibody (C-Terminus, clone E16-L) - Images**



Anti-Cytokeratin 19 antibody IHC of human pancreas.



Anti-Cytokeratin 19 antibody IHC of human prostate.



Anti-Cytokeratin 19 antibody IHC of human uterus.

### **KRT19 / CK19 / Cytokeratin 19 Antibody (C-Terminus, clone E16-L) - Background**

Involved in the organization of myofibers. Together with KRT8, helps to link the contractile apparatus to dystrophin at the costameres of striated muscle.

### **KRT19 / CK19 / Cytokeratin 19 Antibody (C-Terminus, clone E16-L) - References**

- Stasiak P.C.,et al.Nucleic Acids Res. 15:10058-10058(1987).
- Bader B.L.,et al.Eur. J. Cell Biol. 47:300-319(1988).
- Eckert R.L.,et al.Proc. Natl. Acad. Sci. U.S.A. 85:1114-1118(1988).
- Stasiak P.C.,et al.J. Invest. Dermatol. 92:707-716(1989).
- Whitlock N.V.,et al.Biochem. Biophys. Res. Commun. 267:462-465(2000).