

KRT18 / CK18 / Cytokeratin 18 Antibody (C-Terminus, clone R20-H)
Rabbit Polyclonal Antibody
Catalog # ALS13064**Specification**

KRT18 / CK18 / Cytokeratin 18 Antibody (C-Terminus, clone R20-H) - Product Information

Application	IHC
Primary Accession	P05783
Reactivity	Human
Host	Rabbit
Clonality	Polyclonal
Calculated MW	48kDa KDa

KRT18 / CK18 / Cytokeratin 18 Antibody (C-Terminus, clone R20-H) - Additional Information**Gene ID** 3875**Other Names**

Keratin, type I cytoskeletal 18, Cell proliferation-inducing gene 46 protein, Cytokeratin-18, CK-18, Keratin-18, K18, KRT18, CYK18

Target/Specificity

Human Cytokeratin 18

Reconstitution & Storage

Store at -20°C. Aliquot to avoid freeze/thaw cycles.

Precautions

KRT18 / CK18 / Cytokeratin 18 Antibody (C-Terminus, clone R20-H) is for research use only and not for use in diagnostic or therapeutic procedures.

KRT18 / CK18 / Cytokeratin 18 Antibody (C-Terminus, clone R20-H) - Protein Information**Name** KRT18**Synonyms** CYK18**Function**

Involved in the uptake of thrombin-antithrombin complexes by hepatic cells (By similarity). When phosphorylated, plays a role in filament reorganization. Involved in the delivery of mutated CFTR to the plasma membrane. Together with KRT8, is involved in interleukin-6 (IL-6)-mediated barrier protection.

Cellular Location

Nucleus matrix {ECO:0000250|UniProtKB:Q5BJY9}. Cytoplasm, perinuclear region. Nucleus, nucleolus. Cytoplasm {ECO:0000250|UniProtKB:Q5BJY9}

Tissue Location

Expressed in colon, placenta, liver and very weakly in exocervix. Increased expression observed in lymph nodes of breast carcinoma.

Volume

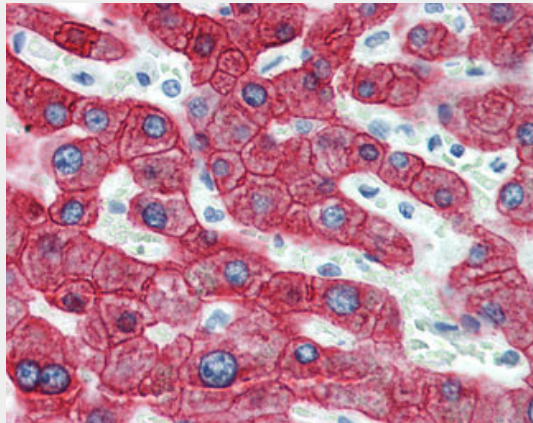
125 µl

KRT18 / CK18 / Cytokeratin 18 Antibody (C-Terminus, clone R20-H) - Protocols

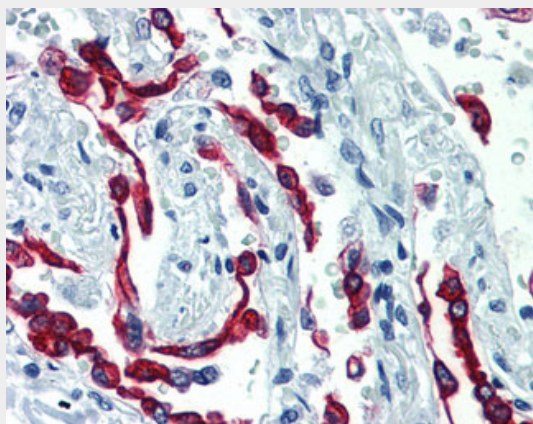
Provided below are standard protocols that you may find useful for product applications.

- [Western Blot](#)
- [Blocking Peptides](#)
- [Dot Blot](#)
- [Immunohistochemistry](#)
- [Immunofluorescence](#)
- [Immunoprecipitation](#)
- [Flow Cytometry](#)
- [Cell Culture](#)

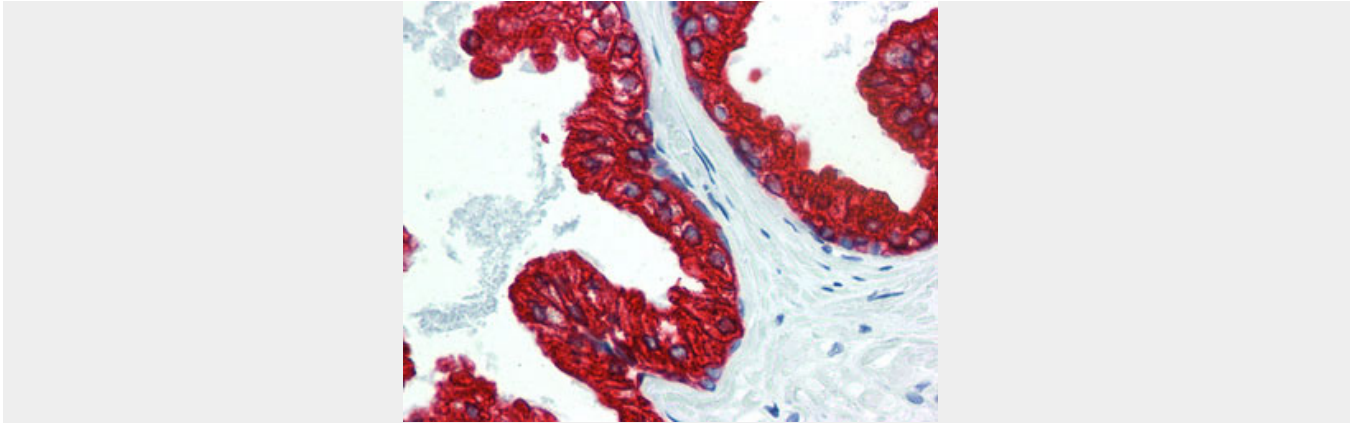
KRT18 / CK18 / Cytokeratin 18 Antibody (C-Terminus, clone R20-H) - Images



Anti-KRT18 / Cytokeratin 18 antibody IHC of human liver.



Anti-KRT18 / Cytokeratin 18 antibody IHC of human lung.



Anti-KRT18 / Cytokeratin 18 antibody IHC of human prostate.

KRT18 / CK18 / Cytokeratin 18 Antibody (C-Terminus, clone R20-H) - Background

Involved in the uptake of thrombin-antithrombin complexes by hepatic cells (By similarity). When phosphorylated, plays a role in filament reorganization. Involved in the delivery of mutated CFTR to the plasma membrane. Together with KRT8, is involved in interleukin-6 (IL-6)-mediated barrier protection.

KRT18 / CK18 / Cytokeratin 18 Antibody (C-Terminus, clone R20-H) - References

- Oshima R.G.,et al.Differentiation 33:61-68(1986).
- Kim J.W.,et al.Submitted (SEP-2004) to the EMBL/GenBank/DDBJ databases.
- Kalnina N.,et al.Submitted (OCT-2004) to the EMBL/GenBank/DDBJ databases.
- Suzuki Y.,et al.Submitted (APR-2005) to the EMBL/GenBank/DDBJ databases.
- Kulesh D.A.,et al.Mol. Cell. Biol. 8:1540-1550(1988).