

KRT16 / CK16 / Cytokeratin 16 Antibody (C-Terminus, clone R20-S)
Rabbit Polyclonal Antibody
Catalog # ALS13062

Specification

KRT16 / CK16 / Cytokeratin 16 Antibody (C-Terminus, clone R20-S) - Product Information

Application	IHC
Primary Accession	P08779
Reactivity	Human
Host	Rabbit
Clonality	Polyclonal
Calculated MW	51kDa KDa

KRT16 / CK16 / Cytokeratin 16 Antibody (C-Terminus, clone R20-S) - Additional Information

Gene ID 3868

Other Names

Keratin, type I cytoskeletal 16, Cytokeratin-16, CK-16, Keratin-16, K16, KRT16, KRT16A

Target/Specificity

Human Cytokeratin 16

Reconstitution & Storage

Store at 2-8°C. Do not freeze.

Precautions

KRT16 / CK16 / Cytokeratin 16 Antibody (C-Terminus, clone R20-S) is for research use only and not for use in diagnostic or therapeutic procedures.

KRT16 / CK16 / Cytokeratin 16 Antibody (C-Terminus, clone R20-S) - Protein Information

Name KRT16

Synonyms KRT16A

Function

Epidermis-specific type I keratin that plays a key role in skin. Acts as a regulator of innate immunity in response to skin barrier breach: required for some inflammatory checkpoint for the skin barrier maintenance.

Tissue Location

Expressed in the corneal epithelium (at protein level).

Volume

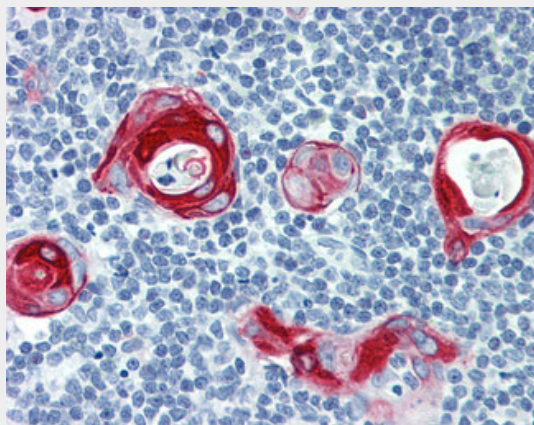
125 µl

KRT16 / CK16 / Cytokeratin 16 Antibody (C-Terminus, clone R20-S) - Protocols

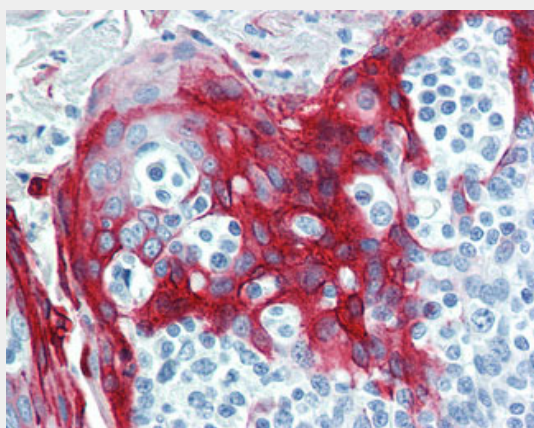
Provided below are standard protocols that you may find useful for product applications.

- [Western Blot](#)
- [Blocking Peptides](#)
- [Dot Blot](#)
- [Immunohistochemistry](#)
- [Immunofluorescence](#)
- [Immunoprecipitation](#)
- [Flow Cytometry](#)
- [Cell Culture](#)

KRT16 / CK16 / Cytokeratin 16 Antibody (C-Terminus, clone R20-S) - Images



Anti-KRT16 / Cytokeratin 16 antibody IHC of human thymus.



Anti-KRT16 / Cytokeratin 16 antibody IHC of human tonsil.

KRT16 / CK16 / Cytokeratin 16 Antibody (C-Terminus, clone R20-S) - Background

Epidermis-specific type I keratin that plays a key role in skin. Acts as a regulator of innate immunity in response to skin barrier breach: required for some inflammatory checkpoint for the skin barrier maintenance.

KRT16 / CK16 / Cytokeratin 16 Antibody (C-Terminus, clone R20-S) - References

Raychaudhury A., et al. Mol. Cell. Biol. 6:539-548(1986).
Rosenberg M., et al. Mol. Cell. Biol. 8:722-736(1988).
Paladini R.D., et al. Biochem. Biophys. Res. Commun. 215:517-523(1995).
Smith F.J.D., et al. Submitted (APR-1998) to the EMBL/GenBank/DDBJ databases.
Ota T., et al. Nat. Genet. 36:40-45(2004).