

**GOT2 Antibody (clone 3E9)**  
**Mouse Monoclonal Antibody**  
**Catalog # ALS13052**

**Specification**

---

**GOT2 Antibody (clone 3E9) - Product Information**

Application	IF, IHC
Primary Accession	<a href="#">P00505</a>
Reactivity	Human, Mouse, Rat, Monkey
Host	Mouse
Clonality	Monoclonal
Calculated MW	48kDa KDa

**GOT2 Antibody (clone 3E9) - Additional Information**

**Gene ID** 2806

**Other Names**

Aspartate aminotransferase, mitochondrial, mAspAT, 2.6.1.1, 2.6.1.7, Fatty acid-binding protein, FABP-1, Glutamate oxaloacetate transaminase 2, Kynurenine aminotransferase 4, Kynurenine aminotransferase IV, Kynurenine--oxoglutarate transaminase 4, Kynurenine--oxoglutarate transaminase IV, Plasma membrane-associated fatty acid-binding protein, FABPpm, Transaminase A, GOT2

**Target/Specificity**

Human GOT2

**Reconstitution & Storage**

Long term: -20°C; Short term: +4°C. Avoid repeat freeze-thaw cycles.

**Precautions**

GOT2 Antibody (clone 3E9) is for research use only and not for use in diagnostic or therapeutic procedures.

**GOT2 Antibody (clone 3E9) - Protein Information**

**Name** GOT2 ([HGNC:4433](#))

**Function**

Catalyzes the irreversible transamination of the L-tryptophan metabolite L-kynurenine to form kynurenic acid (KA). As a member of the malate-aspartate shuttle, it has a key role in the intracellular NAD(H) redox balance. Is important for metabolite exchange between mitochondria and cytosol, and for amino acid metabolism. Facilitates cellular uptake of long-chain free fatty acids.

**Cellular Location**

Mitochondrion matrix. Cell membrane. Note=Exposure to alcohol promotes translocation to the cell membrane.

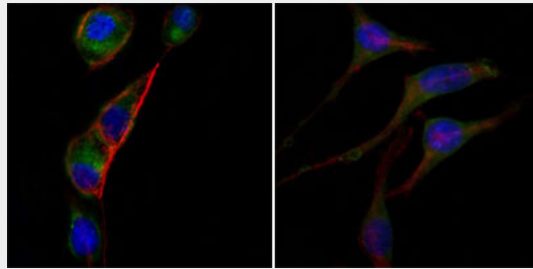
**Volume**  
50  $\mu$ l

### **GOT2 Antibody (clone 3E9) - Protocols**

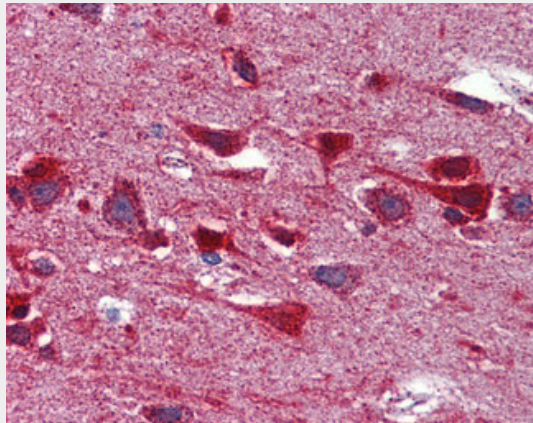
Provided below are standard protocols that you may find useful for product applications.

- [Western Blot](#)
- [Blocking Peptides](#)
- [Dot Blot](#)
- [Immunohistochemistry](#)
- [Immunofluorescence](#)
- [Immunoprecipitation](#)
- [Flow Cytometry](#)
- [Cell Culture](#)

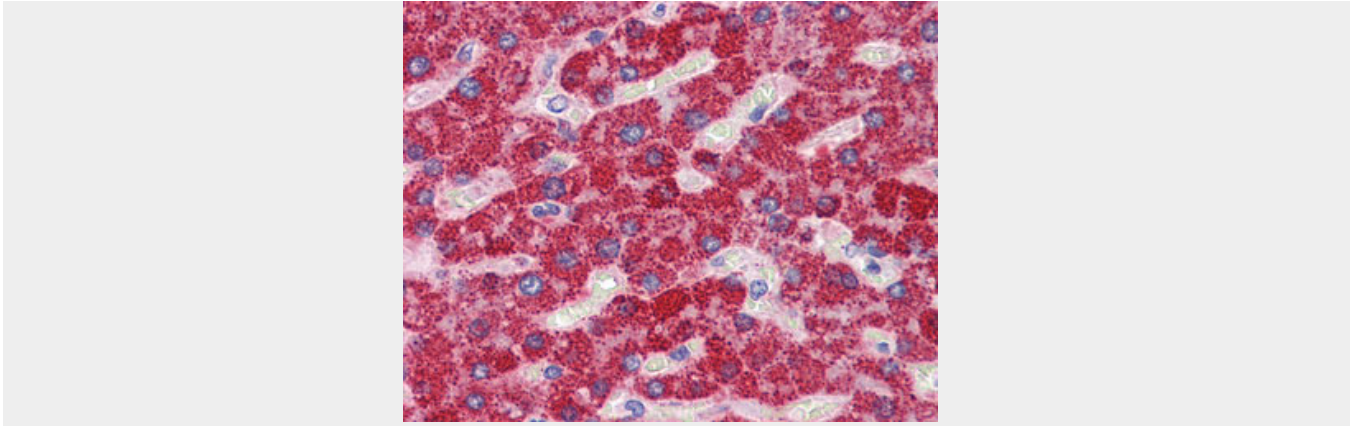
### **GOT2 Antibody (clone 3E9) - Images**



Immunofluorescence of PC-3 (left) and SK-BR-3 (right) cells using anti-GOT2 monoclonal antibody...



Anti-GOT2 antibody IHC of human brain, cortex.



Anti-GOT2 antibody IHC of human liver.

### **GOT2 Antibody (clone 3E9) - Background**

Catalyzes the irreversible transamination of the L- tryptophan metabolite L-kynurenine to form kynurenic acid (KA). Plays a key role in amino acid metabolism. Important for metabolite exchange between mitochondria and cytosol. Facilitates cellular uptake of long-chain free fatty acids.

### **GOT2 Antibody (clone 3E9) - References**

- Pol S.,et al.Biochem. Biophys. Res. Commun. 157:1309-1315(1988).
- Ota T.,et al.Nat. Genet. 36:40-45(2004).
- Suzuki Y.,et al.Submitted (APR-2005) to the EMBL/GenBank/DDBJ databases.
- Martin J.,et al.Nature 432:988-994(2004).
- Martini F.,et al.Biochim. Biophys. Acta 832:46-51(1985).