

**ALB / Serum Albumin Antibody (clone 2H3D1;8F6F9)**  
**Mouse Monoclonal Antibody**  
**Catalog # ALS13047**

### Specification

---

#### ALB / Serum Albumin Antibody (clone 2H3D1;8F6F9) - Product Information

Application	WB, IHC
Primary Accession	<a href="#">P02768</a>
Reactivity	Human
Host	Mouse
Clonality	Monoclonal
Calculated MW	69kDa kDa

#### ALB / Serum Albumin Antibody (clone 2H3D1;8F6F9) - Additional Information

Gene ID 213

#### Other Names

Serum albumin, ALB

#### Target/Specificity

human albumin

#### Reconstitution & Storage

Long term: -20°C; Short term: +4°C. Avoid repeat freeze-thaw cycles.

#### Precautions

ALB / Serum Albumin Antibody (clone 2H3D1;8F6F9) is for research use only and not for use in diagnostic or therapeutic procedures.

#### ALB / Serum Albumin Antibody (clone 2H3D1;8F6F9) - Protein Information

#### Name ALB

#### Function

Binds water, Ca(2+), Na(+), K(+), fatty acids, hormones, bilirubin and drugs (Probable). Its main function is the regulation of the colloidal osmotic pressure of blood (Probable). Major zinc transporter in plasma, typically binds about 80% of all plasma zinc (PubMed:<a href="http://www.uniprot.org/citations/19021548" target="\_blank">19021548</a>). Major calcium and magnesium transporter in plasma, binds approximately 45% of circulating calcium and magnesium in plasma (By similarity). Potentially has more than two calcium-binding sites and might additionally bind calcium in a non-specific manner (By similarity). The shared binding site between zinc and calcium at residue Asp-273 suggests a crosstalk between zinc and calcium transport in the blood (By similarity). The rank order of affinity is zinc > calcium > magnesium (By similarity). Binds to the bacterial siderophore enterobactin and inhibits enterobactin-mediated iron uptake of E.coli from ferric transferrin, and may thereby limit the utilization of iron and growth of enteric bacteria such as E.coli (PubMed:<a href="http://www.uniprot.org/citations/6234017" target="\_blank">6234017</a>). Does not prevent iron uptake by the bacterial siderophore

aerobactin (PubMed:<a href="http://www.uniprot.org/citations/6234017" target="\_blank">6234017</a>).

**Cellular Location**  
Secreted.

**Tissue Location**  
Plasma.

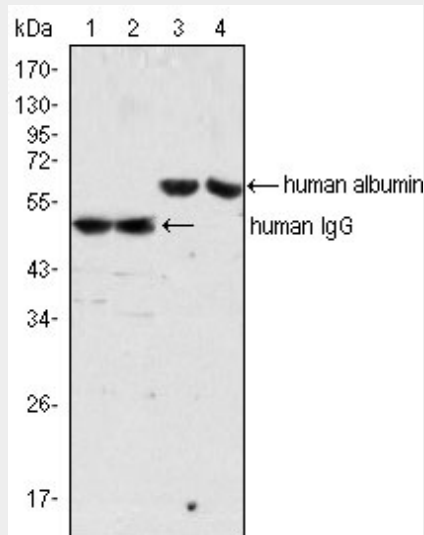
**Volume**  
50  $\mu$ l

### ALB / Serum Albumin Antibody (clone 2H3D1;8F6F9) - Protocols

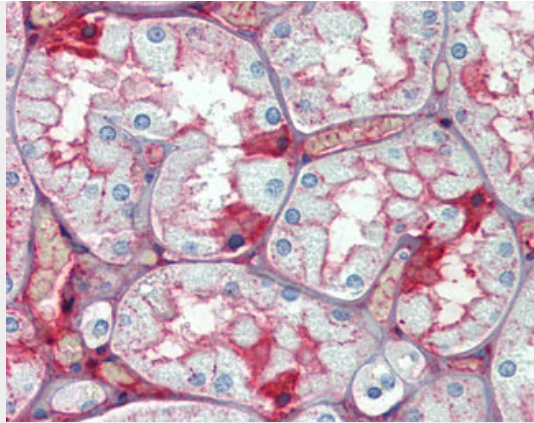
Provided below are standard protocols that you may find useful for product applications.

- [Western Blot](#)
- [Blocking Peptides](#)
- [Dot Blot](#)
- [Immunohistochemistry](#)
- [Immunofluorescence](#)
- [Immunoprecipitation](#)
- [Flow Cytometry](#)
- [Cell Culture](#)

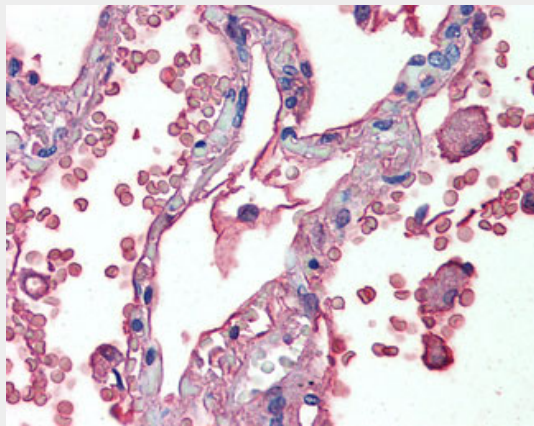
### ALB / Serum Albumin Antibody (clone 2H3D1;8F6F9) - Images



Western blot using human Albumin mouse monoclonal antibody (lane 3, 4) and human IgG mouse...



Anti-Serum Albumin antibody IHC of human kidney.



Anti-Serum Albumin antibody IHC of human lung.

#### **ALB / Serum Albumin Antibody (clone 2H3D1;8F6F9) - Background**

Serum albumin, the main protein of plasma, has a good binding capacity for water, Ca(2+), Na(+), K(+), fatty acids, hormones, bilirubin and drugs. Its main function is the regulation of the colloidal osmotic pressure of blood. Major zinc transporter in plasma, typically binds about 80% of all plasma zinc.

#### **ALB / Serum Albumin Antibody (clone 2H3D1;8F6F9) - References**

- Lawn R.M.,et al.Nucleic Acids Res. 9:6103-6114(1981).
- Dugaiczuk A.,et al.Proc. Natl. Acad. Sci. U.S.A. 79:71-75(1982).
- Minghetti P.P.,et al.J. Biol. Chem. 261:6747-6757(1986).
- Yang S.,et al.Submitted (SEP-1999) to the EMBL/GenBank/DDBJ databases.
- Huang M.C.,et al.Submitted (AUG-2002) to the EMBL/GenBank/DDBJ databases.