

CD38 Antibody (clone 6E12D)
Mouse Monoclonal Antibody
Catalog # ALS13035**Specification**

CD38 Antibody (clone 6E12D) - Product Information

Application	IHC
Primary Accession	P28907
Reactivity	Human
Host	Mouse
Clonality	Monoclonal
Calculated MW	34kDa KDa

CD38 Antibody (clone 6E12D) - Additional Information**Gene ID** 952**Other Names**

ADP-ribosyl cyclase/cyclic ADP-ribose hydrolase 1, 3.2.2.6, 2'-phospho-ADP-ribosyl cyclase, 2'-phospho-ADP-ribosyl cyclase/2'-phospho-cyclic-ADP-ribose transferase, 2.4.99.20, 2'-phospho-cyclic-ADP-ribose transferase, ADP-ribosyl cyclase 1, ADPRC 1, Cyclic ADP-ribose hydrolase 1, cADPr hydrolase 1, T10, CD38, CD38

Target/Specificity

Human CD38

Reconstitution & Storage

Long term: -20°C; Short term: +4°C. Avoid repeat freeze-thaw cycles.

Precautions

CD38 Antibody (clone 6E12D) is for research use only and not for use in diagnostic or therapeutic procedures.

CD38 Antibody (clone 6E12D) - Protein Information**Name** CD38**Function**

Synthesizes cyclic ADP-ribose (cADPR), a second messenger for glucose-induced insulin secretion (PubMed: [7961800](http://www.uniprot.org/citations/7961800)), PubMed: [8253715](http://www.uniprot.org/citations/8253715)). Synthesizes the Ca(2+) mobilizer nicotinate-adenine dinucleotide phosphate, NAADP(+), from 2'-phospho-cADPR and nicotinic acid, as well as from NADP(+) and nicotinic acid. At both pH 5.0 and pH 7.4 preferentially transforms 2'-phospho-cADPR into NAADP(+), while preferentially cleaving NADP(+) to cADPR and ADPRP rather than into NADDP(+) (PubMed: [16690024](http://www.uniprot.org/citations/16690024)). Has cADPR hydrolase activity (PubMed: [7961800](http://www.uniprot.org/citations/7961800), PubMed: [8253715](http://www.uniprot.org/citations/8253715))

target="_blank">8253715).

Cellular Location

Cell surface. Membrane; Single-pass type II membrane protein

Tissue Location

Expressed at high levels in pancreas, liver, kidney, brain, testis, ovary, placenta, malignant lymphoma and neuroblastoma.

Volume

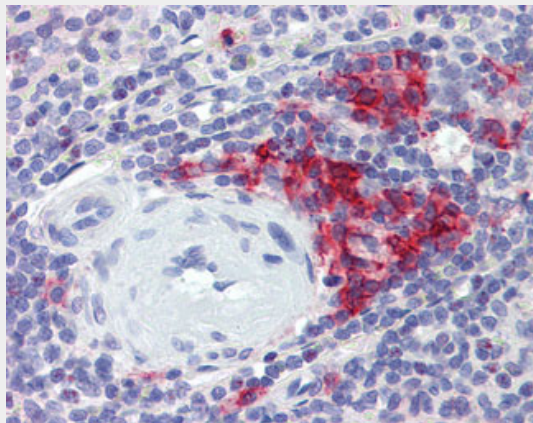
50 μ l

CD38 Antibody (clone 6E12D) - Protocols

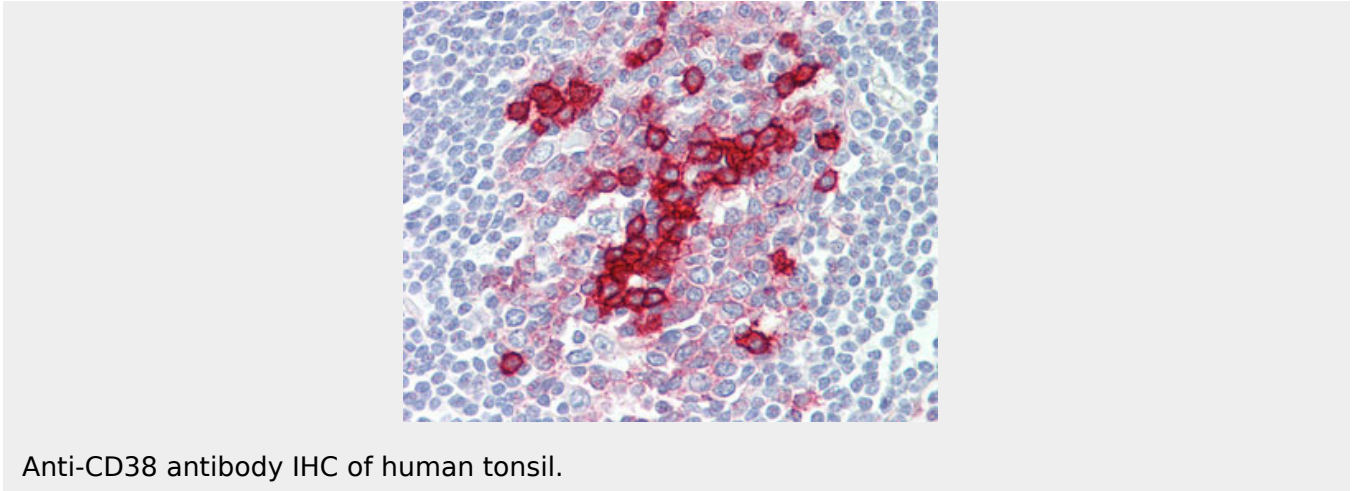
Provided below are standard protocols that you may find useful for product applications.

- [Western Blot](#)
- [Blocking Peptides](#)
- [Dot Blot](#)
- [Immunohistochemistry](#)
- [Immunofluorescence](#)
- [Immunoprecipitation](#)
- [Flow Cytometry](#)
- [Cell Culture](#)

CD38 Antibody (clone 6E12D) - Images



Anti-CD38 antibody IHC of human spleen.



Anti-CD38 antibody IHC of human tonsil.

CD38 Antibody (clone 6E12D) - Background

Synthesizes the second messengers cyclic ADP-ribose and nicotinate-adenine dinucleotide phosphate, the former a second messenger for glucose-induced insulin secretion. Also has cADPr hydrolase activity. Also moonlights as a receptor in cells of the immune system.

CD38 Antibody (clone 6E12D) - References

- Jackson D.G.,et al.J. Immunol. 144:2811-2815(1990).
- Nata K.,et al.Gene 186:285-292(1997).
- States D.J.,et al.Trends Biochem. Sci. 17:495-495(1992).
- Takasawa S.,et al.J. Biol. Chem. 268:26052-26054(1993).
- Tohgo A.,et al.J. Biol. Chem. 269:28555-28557(1994).